

REMARKS : 1) \* --- REFER TO COVER PAGE

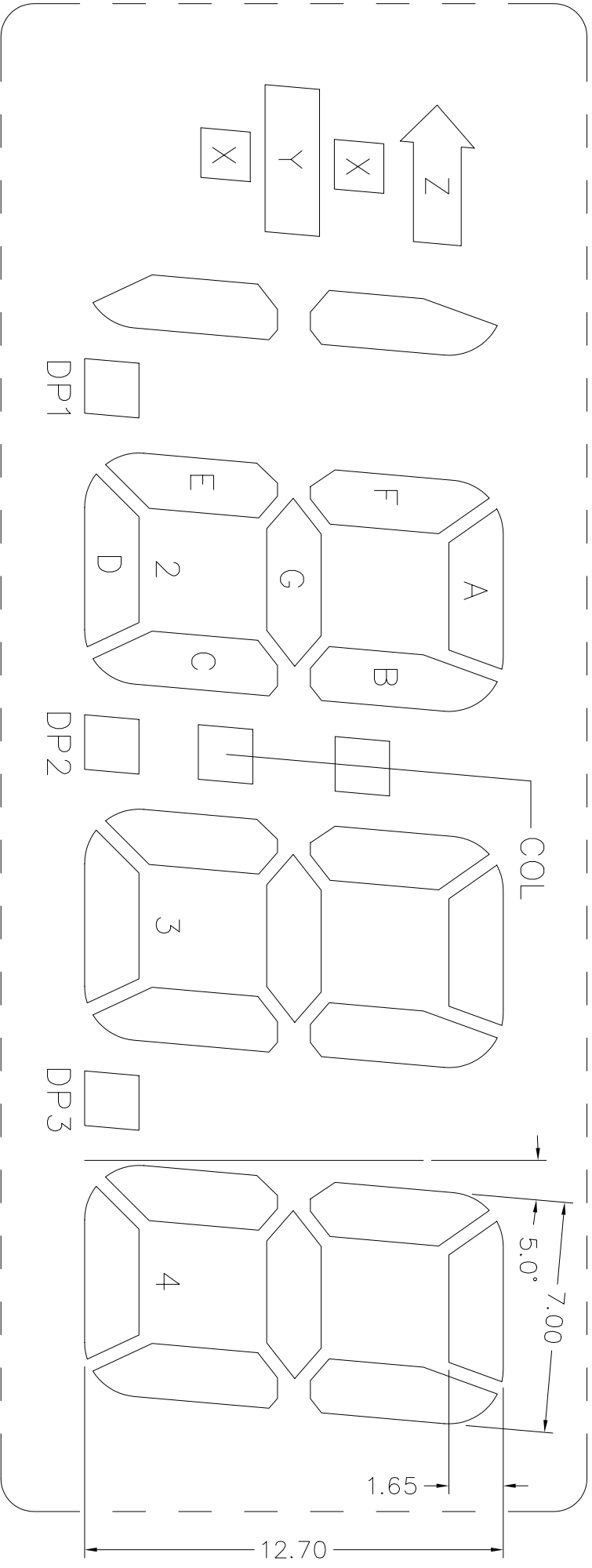
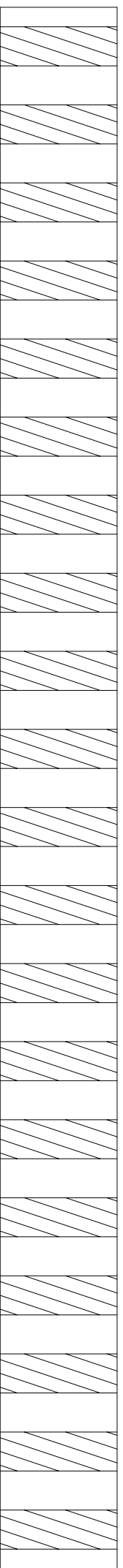
\*\* --- X.XX = 2.54 ( FOR PIN LENGTH  $\geq$  3.20 &  $\leq$  10.00mm)  
 \*\* --- X.XX = 1.75 ( FOR PIN LENGTH  $>$  10.00 &  $\leq$  19.50mm)

<p>DWG. NO. : VI-303-DP0</p>		<p>REV : 0</p>	
<p>VARITRONIX LTD.</p>		<p>Dimension : mm</p>	
<p>Drawn by : MAY</p>		<p>TOL : ±0.15 IF NOT SPECIFY</p>	
<p>Checked by : MAKD</p>		<p>DD NOT SCALE DRAWING</p>	
<p>SIGN :</p>		<p>Date : 99/11/09</p>	
<p>SIGN :</p>		<p>Date :</p>	
		<p>3rd ANGLE PROJECTION</p>	

PIN40

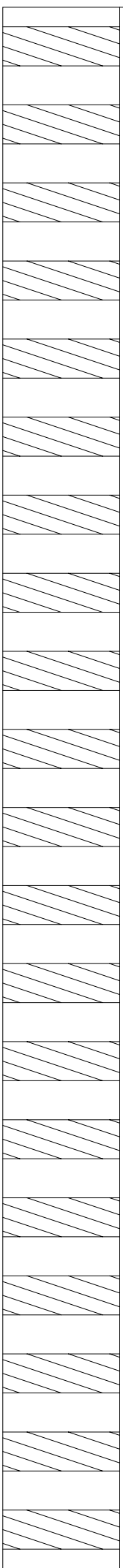
DWG.NO. : VI-303-DP (REV.0)

PIN21

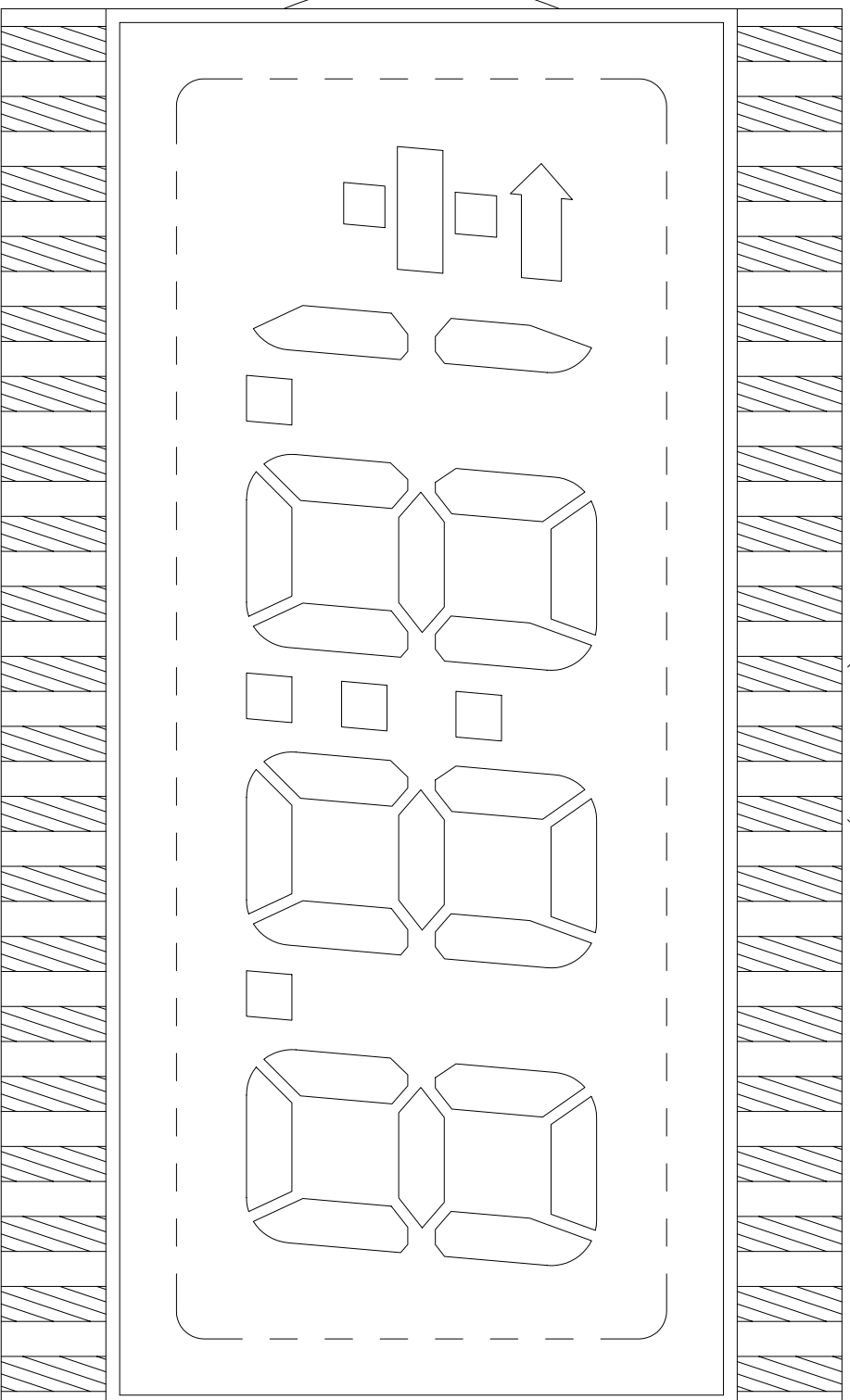


PIN1

PIN20



DWG. NO. : VI-303-DP (REV.0)

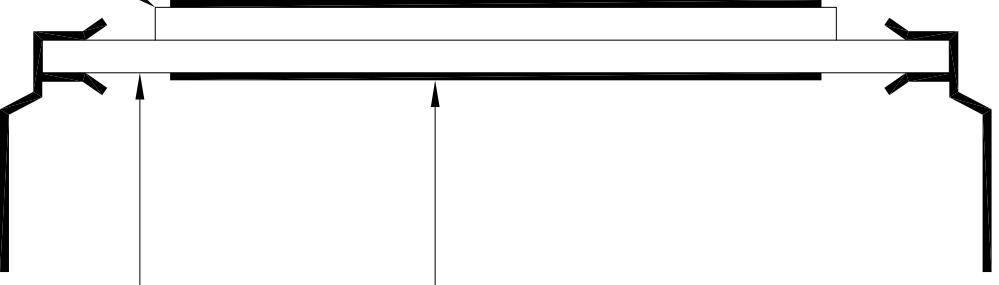


FRONT POLARIZER

FRONT GLASS

BACK GLASS

BACK POLARIZER



DWG.NO. : VI-303-DP (REV.0)

PIN	COM	PIN	COM
1	COM	21	3A
2	Y	22	3F
3	K	23	3G
4	N.C.	24	2B
5	N.C.	25	2A
6	N.C.	26	2F
7	N.C.	27	2G
8	DP1	28	COL
9	1E	29	1B
10	1D	30	1A
11	1C	31	1F
12	DP2	32	1G
13	2E	33	N.C.
14	2D	34	N.C.
15	2C	35	N.C.
16	DP3	36	N.C.
17	3E	37	N.C.
18	3D	38	Z
19	3C	39	X
20	3B	40	COM

REMARKS : 1) N.C. = NO CONNECTION

2) PCB LINKAGE : PIN1 & PIN40