

LM256 RP SMA Dual Band 2.4GHz and 5.8GHz Antenna

2dBi / 3dBi Dipole for SMA Male Reverse Polarity

Revised

17/MAY/2021

[Datasheet Version](#)

1.1

[Ordering Options](#)

See last page

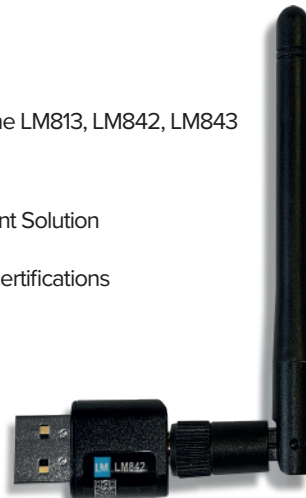
Applications

- IEEE 802.11ac, 802.11a, 802.11b, 802.11g and 802.11n access points and routers
- 2.4 GHz ISM, 5.8 GHz UNII / ISM band applications
- WiFi applications
- Bluetooth® applications
- Ideal for LM products such as the LM813, LM842, LM843

RoHS, REACH and WEEE Compliant Solution

See our website for this products certifications

www.lm-technologies.com



Overview

The LM256 is an high performance, efficient, omnidirectional antenna in a compact form factor. The antenna is tuned to operate on 2.4GHz and 5GHz networks.

The dual band design makes it ideal for high speed 802.11ac applications such as wireless access points and routers, and the latest LM Technologies products such as the LM842 USB adapter and the LM843 module.

The LM256 has a 0–90-degree fixed hinge and a floating SMA that allows for 360-degree swivel rotation. It mounts directly onto RP-SMA female connectors.

Adjustable 360° Swivel with 3 tilt options



90°



45°



0°

LM256 RP SMA Dual Band 2.4GHz and 5.8GHz Antenna

2dBi / 3dBi Dipole for SMA Male Reverse Polarity

General Specification

Type	Dipole
Frequency	2.4GHz (2400-2500MHz) 5.8GHz (5100-5800MHz)
Gain	2.4Ghz: 2dBi 5GHz: 3dBi
Polarization	Vertical
VSWR	≤ 1.9
Impedance	50 Ω
Base Connector	SMA Male Reverse Polarity
Operating Temperature	-40°C to +80°C
Dimensions (D x H)	8mm x 109mm
Weight	10g +/- 0.25g tolerance
Colour	Black
Compliance	RoHS, REACH and WEEE

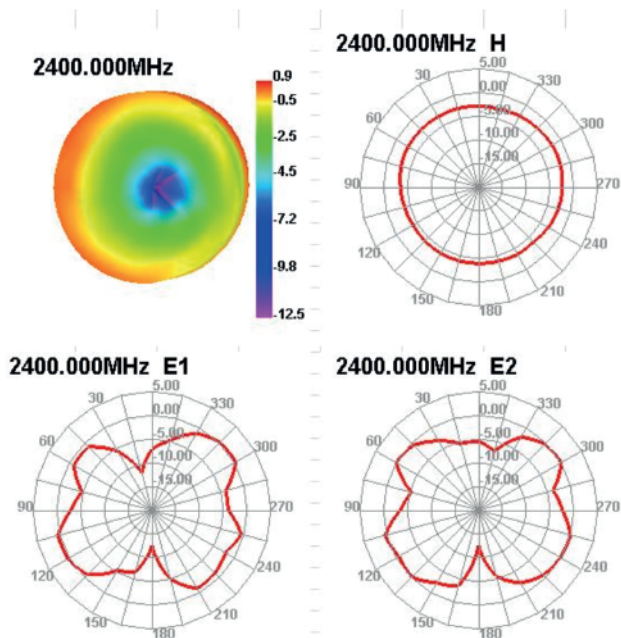
Dimensions



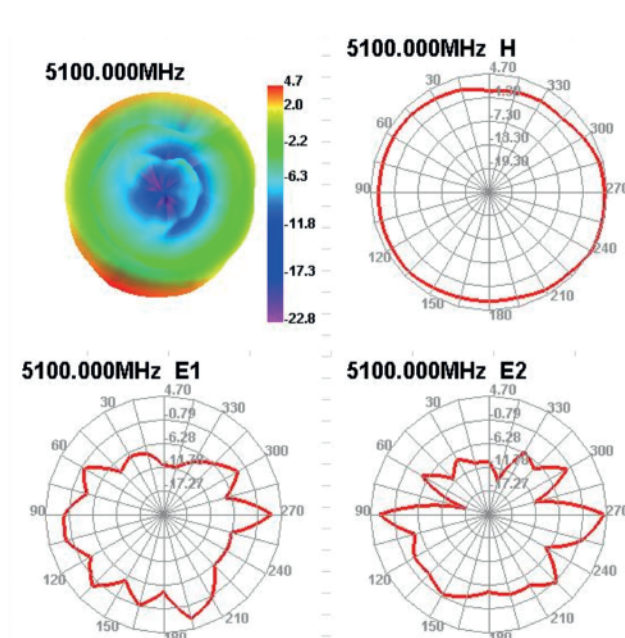
LM256 RP SMA Dual Band 2.4GHz and 5.8GHz Antenna

2dBi / 3dBi Dipole for SMA Male Reverse Polarity

2.4GHz Antenna Patterns



5GHz Antenna Patterns



Ordering Options



256-1056

LM256 RP SMA Dual Band 2.4GHz and 5.8GHz Antenna
2dBi / 3dBi Dipole for SMA Male Reverse Polarity