

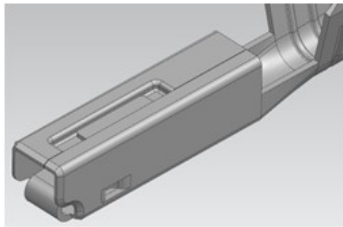


Product Change Notification

Date Issued :	April 24, 2024	PCN Number :	514891
Reason for Change :	Change to Product		
Description of Change :	This notification is to inform you about changes that are being made to the part(s) as identified in the list. This change will affect the appearance of the parts.		
Reason for Short Notice :	Update Previously Issued Change Notice		
Assessment of Change :	First Article Inspection Reliability Test Report/s		
Planned Implementation Date :	May 31, 2024		
Customer Sample Availability Date:	May 03, 2024		
Last date to request Samples by Customer : April 30, 2024			
Please note if Samples are not requested as per Customer Samples Request date, it may take additional 4-6 weeks to arrange Samples.			
Traceability Code Markings / Date :	Date code		

Before Picture

Current



New

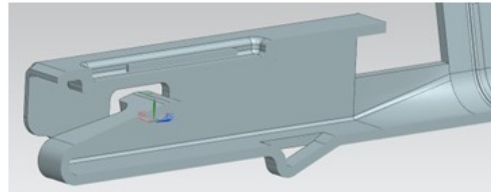
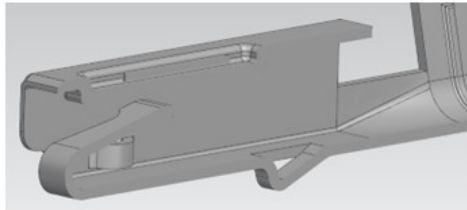
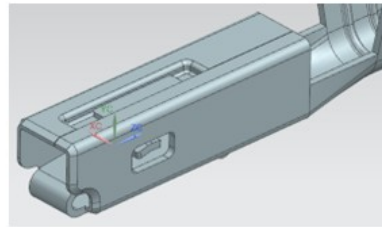


Photo is used as representation of product only
and may not be exact to product you receive.

2156740051 Revision A



1

Molex Confidential Information
© 2016 Molex – All Rights Reserved. Unauthorized Reproduction/Distribution is Prohibited.

After Picture

Overview

- Changing cantilever stop from a detent to a window and updating die to increase capacity
 - This is an update to previously issued PCN 514277, communicated Jan, 23, 2024
- Product Impact
 - The new window design enhances fit, preventing the cantilever from being overstressed.
- Part Number Impact
 - See attached impacted parts list
- PPAP not provided for industrial product

2156740051 Revision A

molex

2

Molex Confidential Information
© 2016 Molex – All Rights Reserved. Unauthorized Reproduction/Distribution is Prohibited.

RELEASED

You may address inquiries regarding this PCN by clicking on the below link
mailto:pcn_coordinator@molex.com?subject=PCN_Notification:514891
or contact your Local Sales Engineer.

Note: While responding, please retain " PCN Notification : **PCN Notification: 514891** " in the e-mail Subject line for faster response.

Molex, LLC
2222 Wellington Court
Lisle, IL 60532
TEL (800) 786-6539
www.molex.com