
ALPHA WIRE COMPANY
CUSTOMER PRODUCT SPECIFICATION

Part Number: SW10-SW14
Page 1 of 2 Pages

Issue: 4
Issue Date: 3/20/2007
Effective Date: 4/20/2007

-NOTE: ALL DIMENSIONS ARE IN INCHES UNLESS OTHERWISE SPECIFIED-

CONSTRUCTION

Product	Spiral Wrap Tubing
Material	Flame Retardant Polyethylene, White

PHYSICAL PROPERTIES

Appearance	Homogeneous Surface, Free From Pinholes, Defects, Cracks, Seams, Inclusions and Chemical Bloom
Dimensions	See Figure 1 and Table 1
Colors	Natural
Temperature Rating, Continuous	-20°C to + 80°C
Tensile Strength	1300 psi

ELECTRICAL PROPERTIES

Abrasion Resistance (Taber)	27
Maximum Dielectric Constant	2.58

FLAMMABILITY

Flammability	Self Extinguishing UL 1441
--------------	----------------------------

FINISHED PRODUCT REQUIREMENTS

Product Print Legend	None
Standard Package	See Table 2
Length Tolerance	-0 / +1%
Multiple Length Spools	Maximum of 3 lengths per reel, 10 ft. minimum length of an individual piece

**ALPHA WIRE COMPANY
CUSTOMER PRODUCT SPECIFICATION**

Part Number: SW10-SW14
Page 2 of 2 Pages

Issue: 4
Issue Date: 3/20/2007
Effective Date: 4/20/2007

INCOMING INSPECTION CRITERIA

Physical Construction
Packaging & Labeling
Appearance

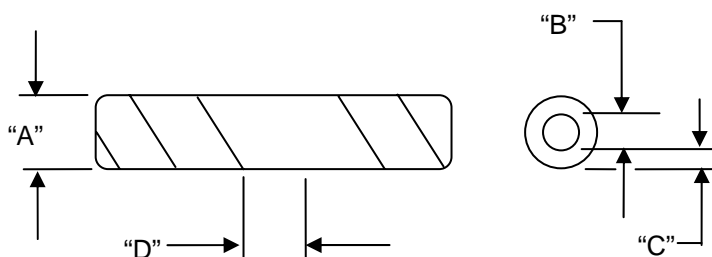


FIGURE 1

TABLE 1: DIMENSIONAL INFORMATION				
Alpha P/N	Outside Dia "A"	Nominal ID "B"	Wall Thickness "C"	Right Hand Pitch "D"
SW-10	0.125 +/-0.020	0.061	0.032 +/-0.010	0.187 +/- 1/16
SW-11	0.250 +/-0.020	0.160	0.045 +/-0.010	0.375 +/- 1/8
SW-12	0.375 +/-0.020	0.271	0.052 +/-0.010	0.438 +/- 1/8
SW-13	0.500 +/-0.025	0.376	0.062 +/-0.010	0.563 +/- 1/8
SW-14	0.750 +/-0.020	0.620	0.065 +/-0.020	0.750 +/- 1/4

Alpha P/N	Standard package
SW-10	25, 100, 500 ft spools
SW-11	25, 100, 500 ft spools
SW-12	25, 100 ft spools
SW-13	25, 100 ft spools
SW-14	25, 100, 500 ft spools

Note: All sizes may contain a maximum of 3 lengths
10 ft. minimum length of an individual piece

Table 2