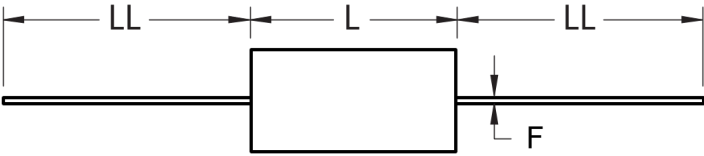
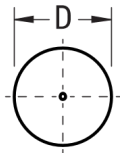


FRONT VIEW



SIDE VIEW



Click [here](#) for the 3D model.

Dimensions

D	17.5mm MAX
L	33mm MAX
LL	40mm +/-5mm
F	1mm NOM

Packaging Specifications

Packaging	Bulk, Bag
Packaging Quantity	150

General Information

Series	C4G
Dielectric	Metallized Polypropylene
Style	Axial
Features	Switching
RoHS	Yes
Lead	Wire Leads
AEC-Q200	No
Typical Component Weight	7.6 g
Miscellaneous	Polyester Tape & Resin Protection.

Specifications

Capacitance	2.2 uF
Capacitance Tolerance	5%
Voltage DC	400 VDC
Voltage AC	250 VAC
Temperature Range	-40/+85°C
Rated Temperature	70°C
Dissipation Factor	0.05%
Max dV/dt	45 V/us
ESR	4.4 mOhms (100kHz)
Ripple Current	9 Amps (100kHz 70C), 99 Amps (Peak)