



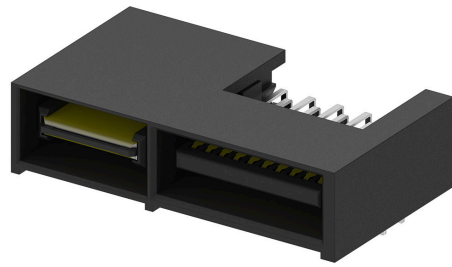
Part Number : [459852133](#)

Product Description : EXTreme LHPower Plug, Right-Angle, 2 Power Contacts, 20 Signal Contacts, Select Gold (Au) Plating, for 1.57mm Thick PC Board

Series Number : 45985

Status : Active

Product Category : Board-to-Board Connectors



Documents & Resources

Drawings

[Drawing 459852133_sd.pdf](#)

[Packaging Design Drawing PK-45984-001-001.pdf](#)

3D Models and Design Files

[3D Model 459852133_stp.zip](#)

Specifications

[Product Specification PS-45984-001-001.pdf](#)

Product Environment Compliance

Compliance

GADSL/IMDS	Not Relevant
China RoHS	
EU ELV	Not Relevant
Low-Halogen Status	Low-Halogen per IEC 61249-2-21
REACH SVHC	Not Contained per D(2024)4144-DC (27 June 2024)
EU RoHS	Compliant per EU 2015/863

Multiple Part Product Compliance Statements

- Eu RoHS
- REACH SVHC
- Low-Halogen

Multiple Part Industry Compliance Documents

- IPC 1752A Class C

- IPC 1752A Class D
- Molex Product Compliance Declaration
- IEC-62474
- chemSHERPA (xml)

EU RoHS Certificate of Compliance

Part Details

General

Status	Active
Category	Board-to-Board Connectors
Series	45985
Description	EXTreme LPHPower Plug, Right-Angle, 2 Power Contacts, 20 Signal Contacts, Select Gold (Au) Plating, for 1.57mm Thick PC Board
Application	Board-to-Board, Power, Signal
Component Type	PCB Header
Product Family	EXTreme LPHPower Connectors
Product Name	EXTreme LPHPower
UPC	195842344112

Electrical

Current - Maximum per Contact	30.0A
Voltage - Maximum	250V AC (RMS)/DC (Power), 30V DC (Signal)

Physical

Breakaway	No
Circuits (Loaded)	22
Circuits (maximum)	22
Color - Resin	Black
Durability (mating cycles max)	250
First Mate / Last Break	No
Glow-Wire Capable	No
Guide to Mating Part	No
Keying to Mating Part	None
Lock to Mating Part	No

Material - Metal	High Performance Alloy (HPA)
Material - Plating Mating	Gold
Material - Plating Termination	Tin
Material - Resin	High Temperature Thermoplastic
Net Weight	3.917/g
Number of Rows	2
Orientation	Right Angle
Packaging Type	Tray
PC Tail Length	2.90mm
PCB Locator	No
PCB Retention	None
PCB Thickness - Recommended	1.57mm
Pitch - Mating Interface	1.27mm, 12.00mm
Pitch - Termination Interface	1.27mm, 2.00mm, 2.50mm
Plating min - Mating	0.762µm
Plating min - Termination	3.810µm
Polarized to Mating Part	Yes
Polarized to PCB	Yes
(p)ower-(s)ignal Configuration	2p - 20s
Shrouded	Fully
Stackable	No
Temperature Range - Operating	-40° to +105°C
Termination Interface Style	Through Hole

Mates With / Use With

Mates with Part(s)

Description	Part Number
EXTreme LPHPower Right-Angle PCB Receptacles	<u>45984</u>