

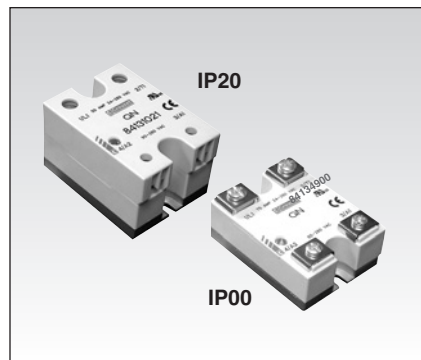
# DC Solid State Relays

**GF Series; FET output - 10A, 15 A, 30A**

- ▶ Very low leakage current (< 10uA)
- ▶ Milliohm On-Resistance Minimizes voltage drop, heat dissipation
- ▶ 1500 VAC Optical Isolation
- ▶ UL/cUL recognized, Tuv approved, CE compliant

**GT Series; transistor output 10A**

- ▶ Long Life Switching of DC loads
- ▶ 4 kV Optical Isolation
- ▶ UL E46203
- ▶ Available with IP20 "touch-safe" cover



## Output Specifications

Output	FET	FET	FET	TRAN
Voltage range VDC	1-200	1-100	1-50	3-60
Off-state leakage mA	0.01	0.01	0.01	1.0
Output Current (Mounted on proper heat sink, see deratings)	10	15	30	10
Minimum Current	0.1	0.1	0.1	10
Max. 1 second surge current	60	120	160	90
Max On-State Voltage Drop or	n/a	n/a	n/a	n/a
On-State Resistance m Ohms	90	90	50	n/a
Rjb (thermal res. Junction to baseplate, °C/W)	4.4	4.6	2.3	4.3
Minimum heat sink @ ambient (for max current = °C/W & Ta)	3.0 @ 25°C	3.0 @ 25°C	1.0 @ 25°C	1.0 @ 65°C

## Input Specifications

Input voltage*	3-32Vdc			
Drop out voltage	1Vdc			
Max. input current (mA)	20	20	20	14.5
Min. input current (for on-state) m	12	12	12	9
Input Resistance	Current Regulated			
Max. Turn-on time (mS)	2	2	2	.1
Max. Turn-off time (uS)	50	50	50	200

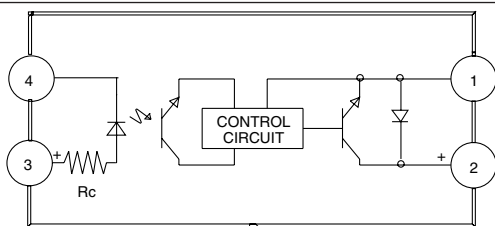
## General Characteristics

Operating Temperature (°C)	-20 to +80
Storage Temperature (°C)	-40 to +100
Input to output isolation	4000Vrms
Input/output to ground isolation	2500Vrms
Input to output capacitance	8pF (typical)
Housing Material	UL 94V0 (self extinguishing)

## Safety and Noise Immunity Compliance

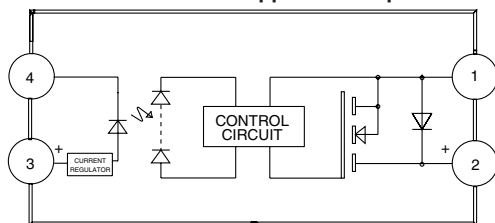
CE Compliant with the LVD 73/23/EEC

TUV EN60950



GT SERIES EQUIVALENT CIRCUIT

**DC inductive loads must be diode suppressed to prevent damage to SSR**



GF SERIES EQUIVALENT CIRCUIT

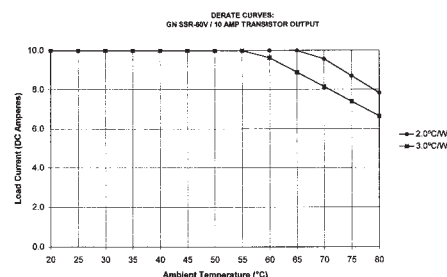
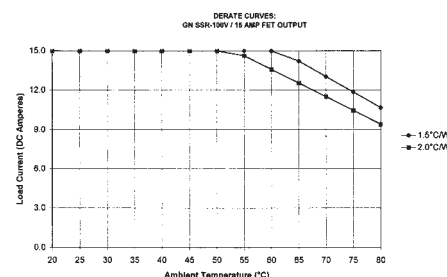
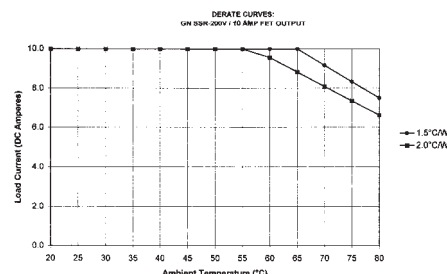
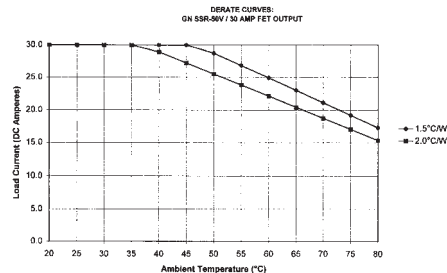
## Part Numbers

### FET Output

Rating	Output	Input	IP00	IP20
10 Amp	1-200Vdc	3-32Vdc	<b>84 134 850</b>	<b>84 137 850</b>
15 Amp	1-100Vdc	3-32Vdc	<b>84 134 860</b>	<b>84 137 860</b>
30 Amp	1-50Vdc	3-32Vdc	<b>84 134 870</b>	<b>84 137 870</b>

### Transistor Output

10 Amp	3-60Vdc	3-32Vdc	<b>84 134 750</b>	<b>84 137 750</b>
--------	---------	---------	-------------------	-------------------



Products and specifications subject to change without notice.

Consult factory for application assistance.