

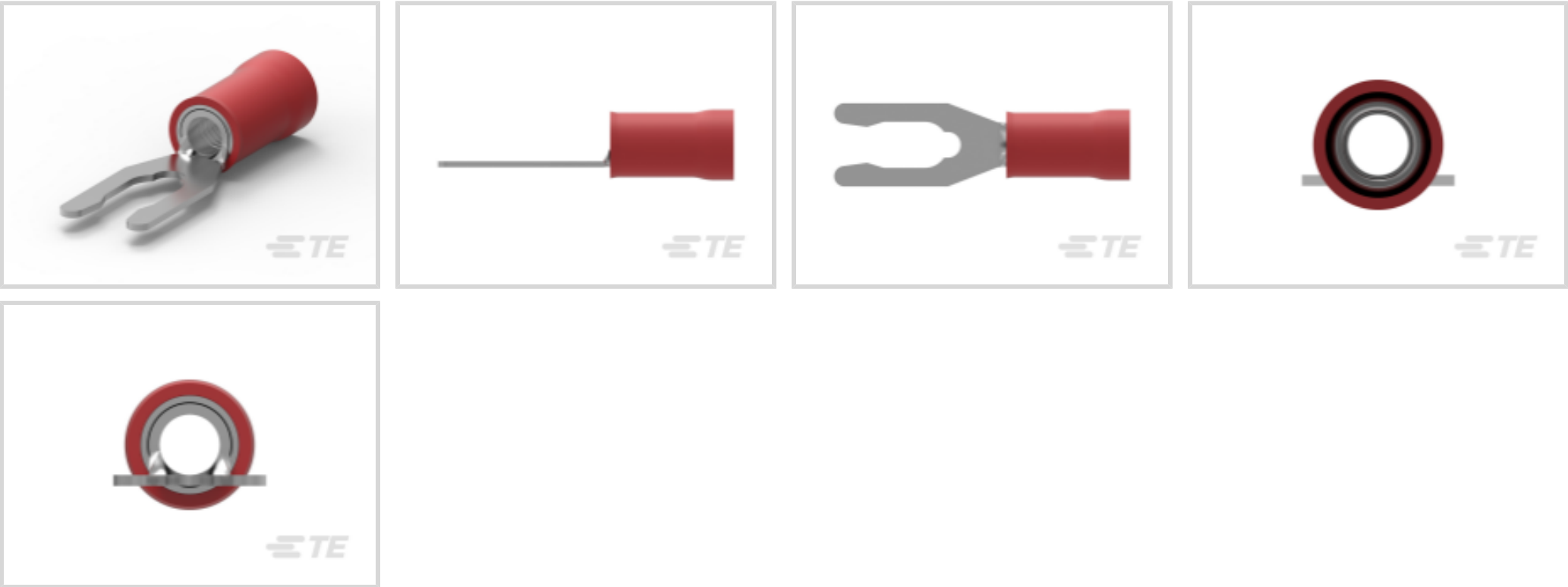


PIDG

TE Internal #: 52409-1
Spring Spade Terminal, 22 – 16 AWG, #6 / M3.5 Stud Size, 3.51 mm
[.138 in] Stud Diameter, Closed Barrel, Straight, Tin, Partially
Insulated

[View on TE.com >](#)

Terminals & Splices > Spade Terminals > PIDG Long Spring Spade Tongue Terminals



Spade Terminal Type: **Spring Spade Terminal**
Wire Size: **509 – 3260 CMA**
Stud Size: **#6, M3.5**

[All PIDG Long Spring Spade Tongue Terminals \(50\)](#)

Features

Contact Features

Spade Terminal Type	Spring Spade Terminal
Barrel Type	Closed
Terminal Orientation	Straight
Terminal Plating Material	Tin

Dimensions

Wire Size	509 – 3260 CMA
Stud Diameter	3.51 mm[.138 in]
Tongue Thickness	.79 mm[.031 in]
Product Length	23.7 mm[.933 in]
Compatible Insulation Diameter (Max)	3.18 mm[.125 in]
Compatible Insulation Diameter Range	2.03 – 3.18 mm[.08 – .125 in]

Product Type Features

Stud Size	#6, M3.5
Sealable	No



Wire Insulation Support Retention Type	Insulation Support
--	--------------------

Usage Conditions

Insulation Option	Partially Insulated
Operating Temperature Range	105 °C[221 °F]

Operation/Application

Compatible With Wire Base Material	Copper
Compatible With Wire Plating Material	Tin

Packaging Features

Packaging Method	Tape Mounted
Packaging Quantity	5000

Other

EU RoHS Compliance	Compliant
EU ELV Compliance	Compliant

Electrical Characteristics

Voltage Rating	300 V
----------------	-------

Body Features

Insulation Sleeve Color	Red
Stripe Color	Red

Mechanical Attachment

Wire Insulation Support	With
-------------------------	------

Industry Standards

Government Qualified Terminal	No
-------------------------------	----

Product Compliance

For compliance documentation, visit the product page on TE.com>

EU RoHS Directive 2011/65/EU	Compliant
EU ELV Directive 2000/53/EC	Compliant
China RoHS 2 Directive MIIT Order No 32, 2016	No Restricted Materials Above Threshold
EU REACH Regulation (EC) No. 1907/2006	Current ECHA Candidate List: JUNE 2024 (241) Candidate List Declared Against: JUNE 2024 (241) Does not contain REACH SVHC



Halogen Content	Low Halogen - Br, Cl, F, I < 900 ppm per homogenous material. Also BFR/CFR/PVC Free
Solder Process Capability	Not applicable for solder process capability

Product Compliance Disclaimer

This information is provided based on reasonable inquiry of our suppliers and represents our current actual knowledge based on the information they provided. This information is subject to change. The part numbers that TE has identified as EU RoHS compliant have a maximum concentration of 0.1% by weight in homogenous materials for lead, hexavalent chromium, mercury, PBB, PBDE, DBP, BBP, DEHP, DIBP, and 0.01% for cadmium, or qualify for an exemption to these limits as defined in the Annexes of Directive 2011/65/EU (RoHS2). Finished electrical and electronic equipment products will be CE marked as required by Directive 2011/65/EU. Components may not be CE marked. Additionally, the part numbers that TE has identified as EU ELV compliant have a maximum concentration of 0.1% by weight in homogenous materials for lead, hexavalent chromium, and mercury, and 0.01% for cadmium, or qualify for an exemption to these limits as defined in the Annexes of Directive 2000/53/EC (ELV). Regarding the REACH Regulation, the information TE provides on SVHC in articles for this part number is based on the latest European Chemicals Agency (ECHA) 'Guidance on requirements for substances in articles' posted at this URL: <https://echa.europa.eu/guidance-documents/guidance-on-reach>

Compatible Parts



TE Part # 47386
DAHT PG PIDG 26-16 ASSY



TE Part # 58433-3
PRO CR ASSY, RBY IS9252




TE Part # 58423-1
DIE, RBY IS9252

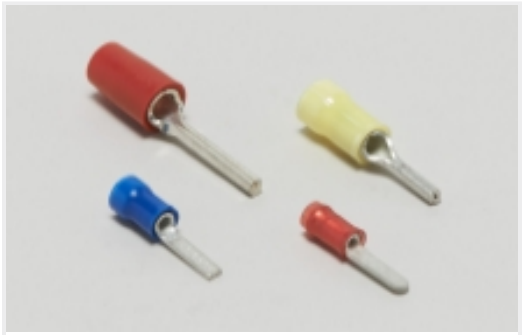


TE Part # 169404
CERTI-LOK DIE


Also in the Series | PIDG



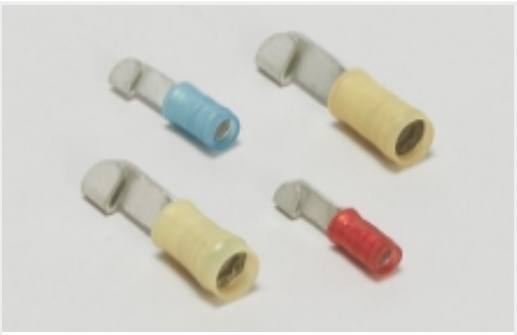
Compression Connectors(17)




Crimp Wire Pins, Tabs & Ferrules(41)




Hand Crimping Tools(2)



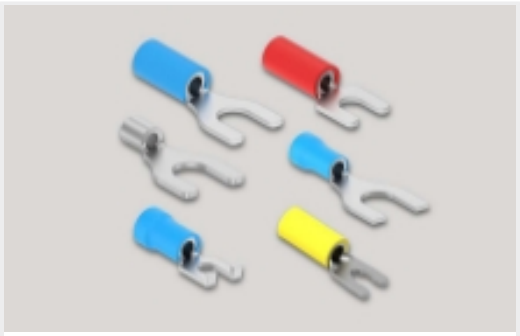
Knife Disconnects(11)




Quick Disconnects(32)



Ring Terminals(588)



Spade Terminals(228)



Special Purpose Terminals(1)



Splices(39)

Customers Also Bought



TE Part #HD14-5-16P
REC, 5P, GRY, N, 16



TE Part #52420-1
PIDG Long Spring Spade Tongue
Terminals



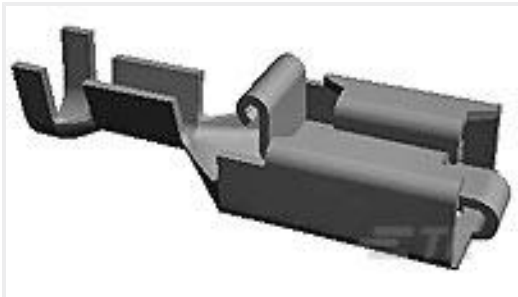
TE Part #338095-4
MICRO-MATCH COSIHSG



TE Part #2-34541-1
PIDG SPD 22-16 COMM 22-18MIL 6



TE Part #1-338096-1
MICRO-MATCH COSI CONTACT



TE Part #170234-1
POSITIVE LOCK RECP



TE Part #5-1393250-6
W28-XTBA-4=W28



TE Part #DT12S-BT
BOOT, 12P, PLG, ST, GRY

Documents

Product Drawings
PIDG SP SPD 22-16COM22-18MIL 6
English

CAD Files
3D PDF
3D
Customer View Model
ENG_CVM_CVM_52409-1_J.2d_dxf.zip
English
Customer View Model
ENG_CVM_CVM_52409-1_J.3d_igs.zip
English
Customer View Model
ENG_CVM_CVM_52409-1_J.3d_stp.zip
English

By downloading the CAD file I accept and agree to the Terms and Conditions of use.



Instruction Sheets

Instruction Sheet (U.S.)

English

Agency Approvals

UL Report

English