



Connectors > PCB Connectors > Memory Card Connectors > PCMCIA Connectors



EU RoHS Compliance: **Compliant**

EU ELV Compliance: **Compliant**

Header Type: **Fully Shrouded**

Connector System: **Cable-to-Board**

Number of Positions: **68**

Features

Contact Features

	30 µin
Contact Underplating Material	Nickel
Contact Layout	Staggered
Contact Mating Area Plating Material	Gold
Contact Base Material	Brass
PCB Contact Termination Area Plating Material	Tin
Contact Type	Pin
Contact Current Rating (Max)	.1 A

Other

EU RoHS Compliance	Compliant
EU ELV Compliance	Compliant

Product Type Features

Connector & Contact Terminates To	Printed Circuit Board
Header Type	Fully Shrouded



Connector System	Cable-to-Board
Configuration Features	
Number of Positions	68
Number of Rows	5
Number of Card Slots	1
PCB Mount Orientation	Right Angle
Electrical Characteristics	
Voltage Rating	3.3 VAC
Body Features	
Primary Product Color	Black
Connector Profile	Standard
Termination Features	
Termination Method to PCB	Through Hole - Solder
Mechanical Attachment	
Connector Mounting Type	Board Mount
Housing Features	
Housing Material	LCP (Liquid Crystal Polymer)
Centerline (Pitch)	1.27 mm[.05 in]
Dimensions	
Profile Height from PCB	3.25 mm[.128 in]
Usage Conditions	
Operating Temperature Range	-20 – 70 °C[-4 – 158 °F]
Operation/Application	
Shielded	Yes
Circuit Application	Signal
Industry Standards	
UL Flammability Rating	UL 94V-0
Packaging Features	
Packaging Method	Tray, Box & Tray
Packaging Quantity	20



Product Compliance

For compliance documentation, visit the product page on TE.com>

EU RoHS Directive 2011/65/EU	Compliant
EU ELV Directive 2000/53/EC	Compliant
China RoHS 2 Directive MIIT Order No 32, 2016	No Restricted Materials Above Threshold
EU REACH Regulation (EC) No. 1907/2006	Current ECHA Candidate List: JUNE 2024 (241) Candidate List Declared Against: JUNE 2024 (241) Does not contain REACH SVHC
Halogen Content	Low Bromine/Chlorine - Br and Cl < 900 ppm per homogenous material. Also BFR /CFR/PVC Free
Solder Process Capability	Reflow solder capable to 260°C

Product Compliance Disclaimer

This information is provided based on reasonable inquiry of our suppliers and represents our current actual knowledge based on the information they provided. This information is subject to change. The part numbers that TE has identified as EU RoHS compliant have a maximum concentration of 0.1% by weight in homogenous materials for lead, hexavalent chromium, mercury, PBB, PBDE, DBP, BBP, DEHP, DIBP, and 0.01% for cadmium, or qualify for an exemption to these limits as defined in the Annexes of Directive 2011/65/EU (RoHS2). Finished electrical and electronic equipment products will be CE marked as required by Directive 2011/65/EU. Components may not be CE marked. Additionally, the part numbers that TE has identified as EU ELV compliant have a maximum concentration of 0.1% by weight in homogenous materials for lead, hexavalent chromium, and mercury, and 0.01% for cadmium, or qualify for an exemption to these limits as defined in the Annexes of Directive 2000/53/EC (ELV). Regarding the REACH Regulation, the information TE provides on SVHC in articles for this part number is based on the latest European Chemicals Agency (ECHA) ‘Guidance on requirements for substances in articles’ posted at this URL: <https://echa.europa.eu/guidance-documents/guidance-on-reach>

Compatible Parts



Customers Also Bought



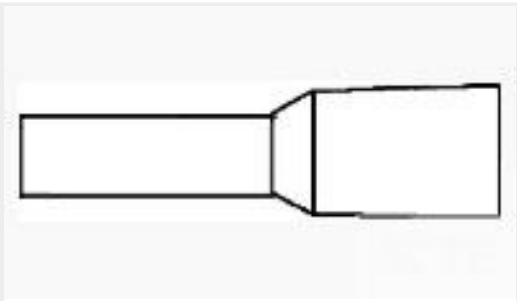
TE Part #440133-2

2.5MM,HSG,2POS



TE Part #171826-4

POST HEADER ASSY HORIZONTAL EI



TE Part #966144-2

FER,WIRE,DBL,PL SLV,-.75/18,L8,GREY,LP



TE Part #3-2199250-3

Shield Finger, Loose Piece, Type C, 3.2h



TE Part #1SNK905302R0000

JB5-2



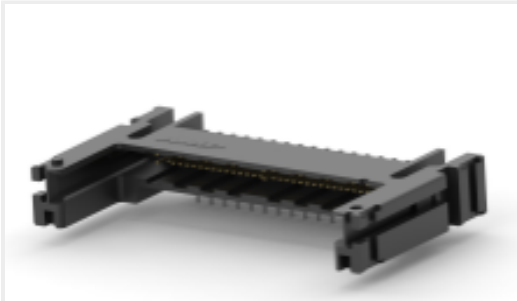
TE Part #CONBNC001

BNC Jack 50 Ohm PCB Through Hole



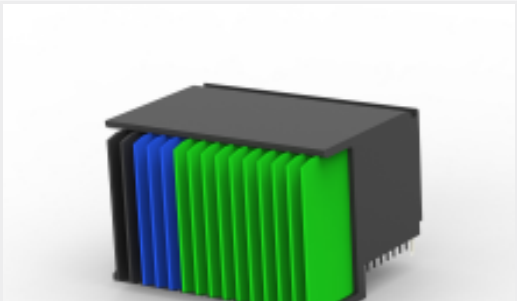
TE Part #EM7499-000

X4-0.8-0-SP-SM



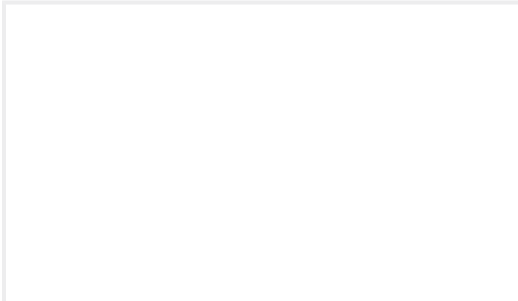
TE Part #5535655-2

68 MEMCD HDR RSD T/H TOP LV



TE Part #1410968-4

MULTIGIG RT2 7RW RTM DC DF CT



TE Part #2340388-1

CA, RPM1192488/1

Documents

Product Drawings

68 MEMCD HDR STD T/H ENHNCD

English

CAD Files

3D PDF

3D

Customer View Model

ENG\_CVM\_CVM\_5146321-1\_O.2d\_dxf.zip

English

Customer View Model

ENG\_CVM\_CVM\_5146321-1\_O.3d\_igs.zip

English

Customer View Model

ENG\_CVM\_CVM\_5146321-1\_O.3d\_stp.zip

English

By downloading the CAD file I accept and agree to the [Terms and Conditions](#) of use.

Product Specifications



Application Specification

English