



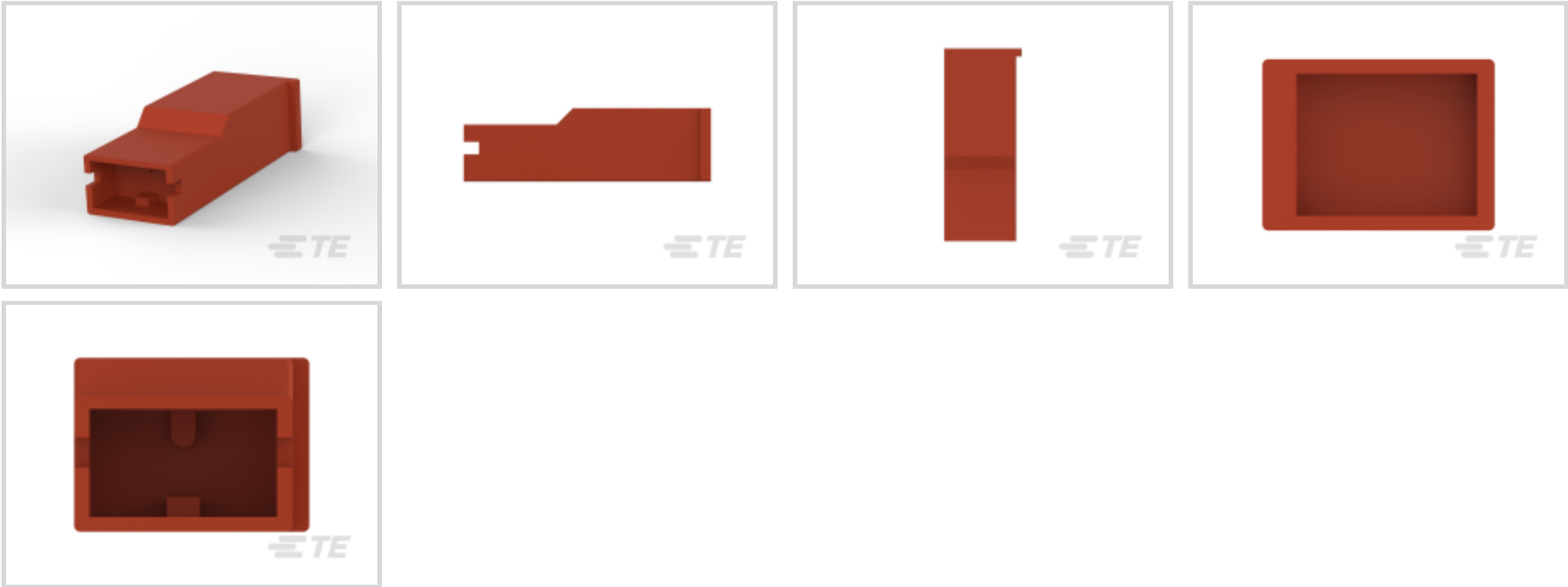
Positive Lock | Mark I, Positive Lock 250

TE Internal #: 154719-9

Receptacle, Receptacle, 1 Position, Straight, UL 94V-2, Brown, Polyamide 6.6 GF, Mating Alignment, Positive Lock 250, Crimp Terminal Housings

[View on TE.com >](#)

Terminals & Splices > Terminal Housings, Insulation Sleeves & Blocks > Crimp Terminal Housings



Terminal Type: **Receptacle**
Connector & Housing Type: **Receptacle**
Number of Positions: **1**
Terminal Orientation: **Straight**
UL Flammability Rating: **UL 94V-2**

Features

Contact Features

Terminal Type	Receptacle
Terminal Orientation	Straight
Contact Mating Retention	Without

Product Type Features

Connector & Housing Type	Receptacle
Connector & Contact Terminates To	Wire & Cable
Sealable	No
Connector System	Wire-to-Board, Wire-to-Wire

Configuration Features

Number of Positions	1
---------------------	---

Industry Standards

UL Flammability Rating	UL 94V-2
------------------------	----------

Body Features

--	--



Primary Product Color	Brown
-----------------------	-------

Housing Features

Housing Material	Polyamide 6.6 GF
------------------	------------------

Mechanical Attachment

Mating Alignment	With
Connector Mounting Type	Cable Mount (Free-Hanging)
Mating Alignment Type	Polarization

Usage Conditions

Operating Temperature Range	-40 – 105 °C[-40 – 221 °F]
-----------------------------	----------------------------

Other

EU RoHS Compliance	Compliant
EU ELV Compliance	Compliant

Dimensions

Product Length	24.26 mm[.96 in]
----------------	------------------

Packaging Features

Packaging Quantity	1500
--------------------	------

Product Compliance

For compliance documentation, visit the product page on TE.com>

EU RoHS Directive 2011/65/EU	Compliant
EU ELV Directive 2000/53/EC	Compliant
China RoHS 2 Directive MIIT Order No 32, 2016	No Restricted Materials Above Threshold
EU REACH Regulation (EC) No. 1907/2006	Current ECHA Candidate List: JUNE 2024 (241) Candidate List Declared Against: JUNE 2024 (241) Does not contain REACH SVHC
Halogen Content	BFR/CFR/PVC Free, but Br/Cl >900 ppm in other sources.
Solder Process Capability	Not applicable for solder process capability

Product Compliance Disclaimer

This information is provided based on reasonable inquiry of our suppliers and represents our current actual knowledge based on the information they provided. This information is subject to change. The part numbers that TE has identified as EU RoHS compliant have a maximum concentration of 0.1% by weight in homogenous materials for lead, hexavalent chromium, mercury, PBB, PBDE, DBP, BBP, DEHP, DIBP, and 0.01% for cadmium, or qualify for an exemption to these



limits as defined in the Annexes of Directive 2011/65/EU (RoHS2). Finished electrical and electronic equipment products will be CE marked as required by Directive 2011/65/EU. Components may not be CE marked. Additionally, the part numbers that TE has identified as EU ELV compliant have a maximum concentration of 0.1% by weight in homogenous materials for lead, hexavalent chromium, and mercury, and 0.01% for cadmium, or qualify for an exemption to these limits as defined in the Annexes of Directive 2000/53/EC (ELV). Regarding the REACH Regulation, the information TE provides on SVHC in articles for this part number is based on the latest European Chemicals Agency (ECHA) 'Guidance on requirements for substances in articles' posted at this URL: <https://echa.europa.eu/guidance-documents/guidance-on-reach>

Compatible Parts

TE Part # 154718-3
PL 250 REC 0.7-2.0 MM2 0.406 TPBR

TE Part # 63812-1
250 PL MKI REC. 18-14AWG TPBR

TE Part # 154717-3
PL 250 REC TERMINAL 14-11 AWG TPBR

TE Part # 1-160759-1
250 PL MKI REC. 20-15AWG PTBR

TE Part # 790319-3
250 PL MKI REC. 12-10AWG PTBR

TE Part # 344160-1
R/ANGLE POS.LOK.Boot

TE Part # 926646-8
PL 250 8P HOUSING PA6.6 ZYTEL 101 WHITE

Also in the Series | Mark I

Automotive Housings(1)

Automotive Terminals(4)

Crimp Terminal Housings(24)

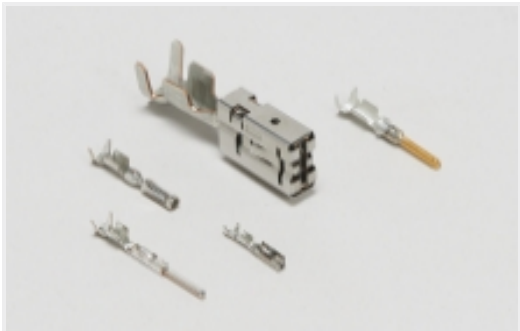
Insertion & Extraction Tools(1)

PCB Headers & Receptacles(10)

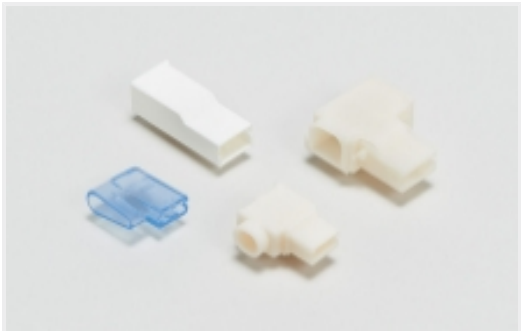
Quick Disconnects(29)



Also in the Series | Positive Lock 250



Automotive Terminals(1)



Crimp Terminal Housings(190)



Insertion & Extraction Tools(3)

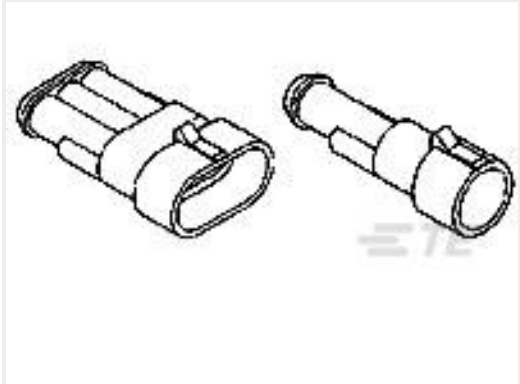


Insulation Boots & Sleeves(4)

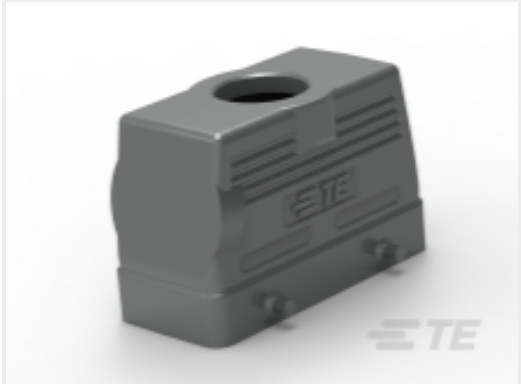


Quick Disconnects(185)

Customers Also Bought



TE Part #282103-1
AMP SUPERSEAL 1.5 SERIES 1P CA



TE Part #T1220160125-000
H16B-TG-M25



TE Part #154719-2
PL 250 REC HSG 1P NYLON RED



TE Part #5-160429-6
187 FASTON REC 16-14 AWG TPBZ



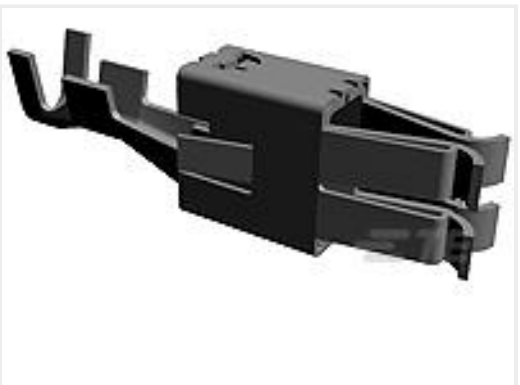
TE Part #1534027-1
MQS VERRIEGLUNG F2P



TE Part #1394133-1
SINGLE WIRE SEAL BLUE



TE Part #9187554002
RT555-1/4-0-SP



TE Part #962932-1
MPT REC 9.5 Contact SRC Sn



TE Part #T2100042201-000
HK4/0-004-F,WITH ONE SLOT SCREW



TE Part #324061
TERMINAL,SOLIS R 8 8



Documents

Product Drawings

PL 250 REC HSG 1P NYLON BROWN

English

CAD Files

3D PDF

3D

Customer View Model

ENG_CVM_CVM_154719-9_AV.2d_dxf.zip

English

Customer View Model

ENG_CVM_CVM_154719-9_AV.3d_igs.zip

English

Customer View Model

ENG_CVM_CVM_154719-9_AV.3d_stp.zip

English

By downloading the CAD file I accept and agree to the [Terms and Conditions](#) of use.

Product Specifications

Application Specification

English

Instruction Sheets

Instruction Sheet (U.S.)

English

Agency Approvals

UL Report

English