



Relays & Contactors > Electromechanical Relays



Relay & Contactor Type: **General Purpose Power Relay**
Coil Magnetic System: **Bistable, 1 Coil, Polarized, Latching**
Contact Arrangement: **1 Form C SPDT-CO**
Contact Current Rating: **16 A**
Coil Voltage Rating: **3 VDC**

Features

Product Type Features

Relay & Contactor Type	General Purpose Power Relay
------------------------	-----------------------------

Operation/Application

Coil Magnetic System	Bistable, 1 Coil, Polarized, Latching
Solder Process	Wave Solder

Configuration Features

Contact Arrangement	1 Form C SPDT-CO
Contact Number of Poles	1
Coil Special Features	UL Coil Insulation Class F

Electrical Characteristics

Contact Current Rating	16 A
Coil Voltage Rating	3 VDC
Contact Voltage Rating	250 VAC
Coil Power Rating DC	.429 W
Insulation Initial Dielectric Between Contacts & Coil	5000 Vrms
Contact Limiting Making Current	30 A
Contact Limiting Continuous Current	16 A
Contact Limiting Breaking Current	16 A



Insulation Initial Dielectric Between Open Contacts	1000 Vrms
Contact Switching Voltage (Max)	400 VAC
Coil Resistance	21 Ω

Termination Features

Main Termination & Connection Type	Solder Pins
Coil Termination & Connection Type	Solder Pins

Mechanical Attachment

Product Mount Type	Printed Circuit Board
--------------------	-----------------------

Body Features

Enclosure Type	Flux Resistant Automatic Soldering
Product Weight	14 g[.494 oz]

Usage Conditions

Environmental Ambient Temperature (Max)	85 °C[185 °F]
Environmental Category of Protection	RTII

Other

Height Class (Mechanical)	15 – 16 mm
Length Class (Mechanical)	25 – 30 mm
Width Class (Mechanical)	12 – 16 mm
EU RoHS Compliance	Compliant
EU ELV Compliance	Compliant
Coil Power Rating Class	.4 – .5 W
Contact Current Class	16 A

Contact Features

Contact Material	AgNi90/10
------------------	-----------

Dimensions

Insulation Clearance Between Contact & Coil	10 mm[.394 in]
Insulation Creepage Between Contact & Coil	10 mm[.394 in]
Product Width	12.7 mm[.5 in]
Product Length	29 mm[1.14 in]
Product Height	15.7 mm[.618 in]

Packaging Features

Packaging Method	Tube, Carton
------------------	--------------



Product Compliance

For compliance documentation, visit the product page on TE.com>

EU RoHS Directive 2011/65/EU	Compliant
EU ELV Directive 2000/53/EC	Compliant
China RoHS 2 Directive MIIT Order No 32, 2016	No Restricted Materials Above Threshold
EU REACH Regulation (EC) No. 1907/2006	Current ECHA Candidate List: JUNE 2024 (241) Candidate List Declared Against: JUNE 2024 (241) Does not contain REACH SVHC
Halogen Content	Not Low Halogen - contains Br or Cl > 900 ppm.
Solder Process Capability	Wave solder capable to 265°C

Product Compliance Disclaimer

This information is provided based on reasonable inquiry of our suppliers and represents our current actual knowledge based on the information they provided. This information is subject to change. The part numbers that TE has identified as EU RoHS compliant have a maximum concentration of 0.1% by weight in homogenous materials for lead, hexavalent chromium, mercury, PBB, PBDE, DBP, BBP, DEHP, DIBP, and 0.01% for cadmium, or qualify for an exemption to these limits as defined in the Annexes of Directive 2011/65/EU (RoHS2). Finished electrical and electronic equipment products will be CE marked as required by Directive 2011/65/EU. Components may not be CE marked. Additionally, the part numbers that TE has identified as EU ELV compliant have a maximum concentration of 0.1% by weight in homogenous materials for lead, hexavalent chromium, and mercury, and 0.01% for cadmium, or qualify for an exemption to these limits as defined in the Annexes of Directive 2000/53/EC (ELV). Regarding the REACH Regulation, the information TE provides on SVHC in articles for this part number is based on the latest European Chemicals Agency (ECHA) ‘Guidance on requirements for substances in articles’ posted at this URL: <https://echa.europa.eu/guidance-documents/guidance-on-reach>

Compatible Parts



Also in the Series | SCHRACK Power PCB Relay RT1



Electromechanical Relays(190)

Customers Also Bought



TE Part #1-1415899-9
RZ03-1C4-D005



TE Part #8-52929-1
PIDG SP SPD 22-16COMM22-18MIL6



TE Part #1-52929-0
TERMINAL,PIDG SPR SPD 22-16 6



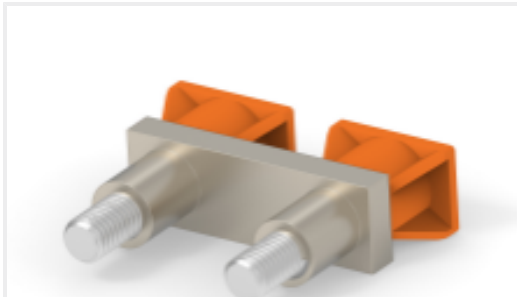
TE Part #1761681-3
IDC LOW PRO HDR 10P VERT HT BLACK



TE Part #5103308-2
A/L LOW PRO HDR 14P VERT BLACK



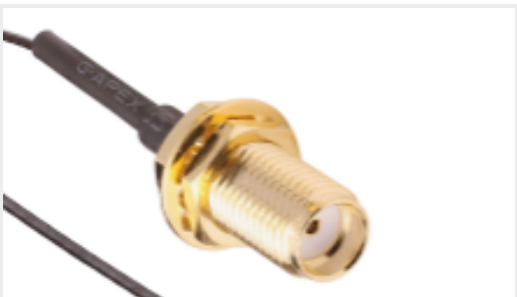
TE Part #1SNK516010R0000
ZS35



TE Part #1SNK916302R0000
JB16-2



TE Part #2118726-2
STD SHIELD FRAME, CRS-44.37X44.37X9.75MM



TE Part #CSJ-SGFB-200-MHF4
SMA to MHF4 200mm 0.81 OD



TE Part #ADP-SMAF-MCXM
SMA Jack to MCX Plug

Documents

CAD Files

Customer View Model

ENG_CVM_CVM_7-1393239-7_D.3d_igs.zip

English

Customer View Model

ENG_CVM_CVM_7-1393239-7_D.3d_stp.zip

English

Customer View Model

ENG_CVM_CVM_7-1393239-7_D.2d_dxf.zip



English

3D PDF

3D

By downloading the CAD file I accept and agree to the [Terms and Conditions](#) of use.

Datasheets & Catalog Pages

Power PCB Relay RT1 bistable

English

Product Specifications

Definitions General Purpose Relays

English

Agency Approvals

VDE Certificate

English