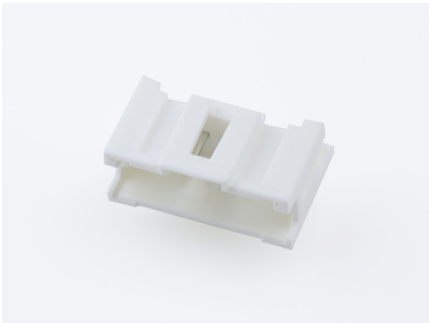




Part Number : [559350710](#)
Product Description : 2.00mm Pitch
MicroClasp Wire-to-Board Header, Single
Row, Right Angle, 7 Circuits, with PCB Locator
Series Number : 55935
Status : Active
Product Category : PCB Headers and
Receptacles



Documents & Resources


Drawings
[559350710_sd.pdf](#)

3D Models and Design Files
[559350710.dxf](#)
[559350710.pdf](#)
[559350710_stp.zip](#)

Specifications
[561340000-AS-000.pdf](#)
[559359200-200.pdf](#)
[513820000-PS-001.pdf](#)
[PS-51382-004-001.pdf](#)

Product Environment Compliance

Compliance

GADSL/IMDS	Not Relevant
China RoHS	
EU ELV	Not Relevant
Low-Halogen Status	Not Low-Halogen per IEC 61249-2-21
REACH SVHC	Not Contained per D(2024)4144-DC (27 June 2024)
EU RoHS	Compliant per EU 2015/863

Multiple Part Product Compliance Statements
- Eu RoHS
- REACH SVHC

- Low-Halogen

Multiple Part Industry Compliance Documents

- IPC 1752A Class C
- IPC 1752A Class D
- Molex Product Compliance Declaration
- IEC-62474
- chemSHERPA (xml)

EU RoHS Certificate of Compliance

Part Details

General

Status	Active
Category	PCB Headers and Receptacles
Series	55935
Description	2.00mm Pitch MicroClasp Wire-to-Board Header, Single Row, Right Angle, 7 Circuits, with PCB Locator
Application	Signal, Wire-to-Board
Component Type	PCB Header
Product Name	MicroClasp
UPC	800756632155

Agency

UL	E29179
----	--------

Electrical

Current - Maximum per Contact	3.0A
Voltage - Maximum	250V AC (RMS)/DC

Physical

Breakaway	No
Circuits (Loaded)	7
Circuits (maximum)	7
Color - Resin	Natural
Durability (mating cycles max)	30
First Mate / Last Break	No

Flammability	94V-0
Glow-Wire Capable	No
Guide to Mating Part	No
Keying to Mating Part	None
Lock to Mating Part	Yes
Material - Plating Mating	Tin
Material - Plating Termination	Tin
Material - Resin	Polyester
Net Weight	745.000/mg
Number of Rows	1
Orientation	Right Angle
Packaging Type	Tray
PC Tail Length	3.20mm
PCB Locator	Yes
PCB Retention	Yes
PCB Thickness - Recommended	1.60mm
Pitch - Mating Interface	2.00mm
Shrouded	Fully
Stackable	No
Temperature Range - Operating	-40° to +105°C
Termination Interface Style	Through Hole

Mates With / Use With

Mates with Part(s)

Description	Part Number
MicroClasp Single Row Receptacle Housings	<u>51382</u>
MicroClasp-to-MicroClasp Off-the-Shelf (OTS) Cable Assemblies	<u>15136</u>