



Toll Free
+1 (866) 839-0402
(tel:+18668390402)

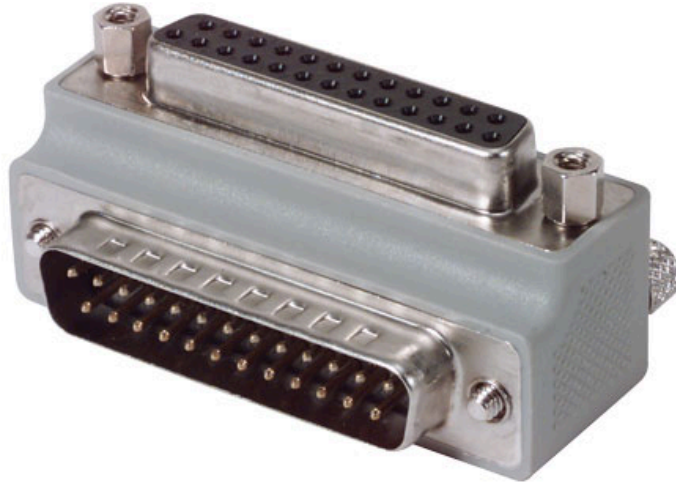
[TECHNOLOGY](#) ▾ [TYPE](#) ▾ [NEW PRODUCTS](#) [CUSTOM CABLES](#)

Search part numbers or description

[Home \(/\)](#) / [D-Subminiature \(/d-sub\)](#) / [Adapters, Couplers, Splitters \(/d-sub-adapters-couplers-splitters\)](#) / [Right Angle Adapters \(/d-sub-right-angle-adapt](#)
[angle-d-sub-adapters-db9-db15-hd15-db25-and-db37-low-profile-molded-and-fully-shielded\)](#) / [Low Profile Right Angle Adapter, DB25 Male / Female, Cable Ex](#)

Low Profile Right Angle Adapter, DB25 Male / Female, Cable I





Connecting cables in tight spaces can be a problem in many applications. These low profile right angle D-Sub adapters solve this problem by allowing cables to mate at a 90 degree angle. Three versions are available for each connector size allowing for cables to exit in opposite directions. Adapters are male to female, fully overmolded with gray PVC. Mating hardware is reversible allowing for use in virtually any application.

Features

- Connector options are DB9, DB15, DB25, DB37 or HD15 male to female with three exit orientations
- 100% shielding throughout for protection against EMI/RFI
- Allows cables to mate at a 90 degree angle to avoid nearby obstructions
- Gold contact plating provides reliable connections with repeated mating cycles
- One inch low profile for optimum clearance allowance

Application

- D-Sub confined space
- OEM applications
- Enclosure applications

SKU	DG9025MF1
-----	-----------

QTY available	1047
---------------	------