



Connectors > Power Connectors > Circular Power > Circular Power Connectors



Connector Product Type: **Housing**
Operating Voltage: **600 VDC**
Connector System: **Wire-to-Wire**
Number of Positions: **14**
Sealable: **No**

Features

Packaging Features

Packaging Quantity	100
Packaging Method	Bag

Mechanical Attachment

Mating Retention Type	Threaded Coupling
Thread Size	15/16-20 UNEF – 2A
Mating Alignment Type	Keyed
Mating Alignment	With
Connector Mounting Type	Cable Mount (Free-Hanging)
Mating Retention	With
Panel Mount Feature	Without

Industry Standards

CSA Rating	Certified
UL Flammability Rating	UL 94V-0

Housing Features



Body Orientation	Straight
Housing Color	Black
Housing Material	Thermoplastic
Circular Connector Shell Size	17

Configuration Features

Reverse Numbering	Without
Number of Positions	14
Number of Power Positions	0
Number of Signal Positions	14

Product Type Features

Connector Product Type	Housing
Connector System	Wire-to-Wire
Sealable	No
Connector & Contact Terminates To	Wire & Cable
Connector & Housing Type	Plug
Circular Connector Shell Type	All Plastic

Electrical Characteristics

Operating Voltage	600 VAC
-------------------	---------

Contact Features

Reverse Gender	Yes
Contact Type	Pin
Contact Protection	With

Usage Conditions

Operating Temperature Range	-55 – 105 °C[-67 – 221 °F]
Fluid Resistance	None

Operation/Application

Circuit Application	Power & Signal
Shielded	No

Other

EU RoHS Compliance	Compliant
EU ELV Compliance	Compliant



Product Compliance

For compliance documentation, visit the product page on TE.com>

EU RoHS Directive 2011/65/EU	Compliant
EU ELV Directive 2000/53/EC	Compliant
China RoHS 2 Directive MIIT Order No 32, 2016	No Restricted Materials Above Threshold
EU REACH Regulation (EC) No. 1907/2006	Current ECHA Candidate List: JUNE 2024 (241) Candidate List Declared Against: JUNE 2024 (241) Does not contain REACH SVHC
Halogen Content	Low Halogen - Br, Cl, F, I < 900 ppm per homogenous material. Also BFR/CFR/PVC Free
Solder Process Capability	Not applicable for solder process capability

Product Compliance Disclaimer

This information is provided based on reasonable inquiry of our suppliers and represents our current actual knowledge based on the information they provided. This information is subject to change. The part numbers that TE has identified as EU RoHS compliant have a maximum concentration of 0.1% by weight in homogenous materials for lead, hexavalent chromium, mercury, PBB, PBDE, DBP, BBP, DEHP, DIBP, and 0.01% for cadmium, or qualify for an exemption to these limits as defined in the Annexes of Directive 2011/65/EU (RoHS2). Finished electrical and electronic equipment products will be CE marked as required by Directive 2011/65/EU. Components may not be CE marked. Additionally, the part numbers that TE has identified as EU ELV compliant have a maximum concentration of 0.1% by weight in homogenous materials for lead, hexavalent chromium, and mercury, and 0.01% for cadmium, or qualify for an exemption to these limits as defined in the Annexes of Directive 2000/53/EC (ELV). Regarding the REACH Regulation, the information TE provides on SVHC in articles for this part number is based on the latest European Chemicals Agency (ECHA) 'Guidance on requirements for substances in articles' posted at this URL: <https://echa.europa.eu/guidance-documents/guidance-on-reach>

Compatible Parts



Also in the Series | AMP CPC



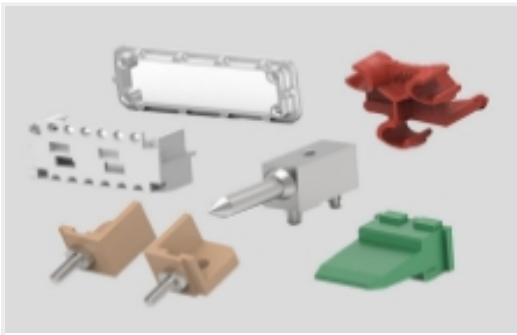
Circular Connector Backshells & Clamps(1)



Circular Power Connectors(423)



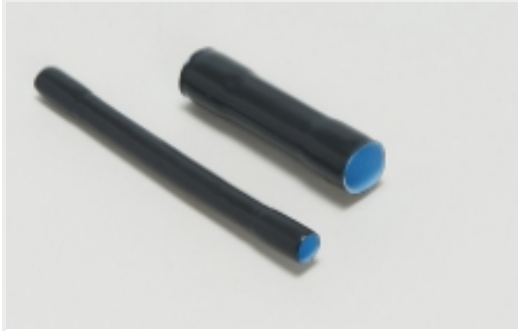
Connector Contacts(6)



Connector Hardware(12)



Power Contacts(6)



Sealing Sleeves(2)

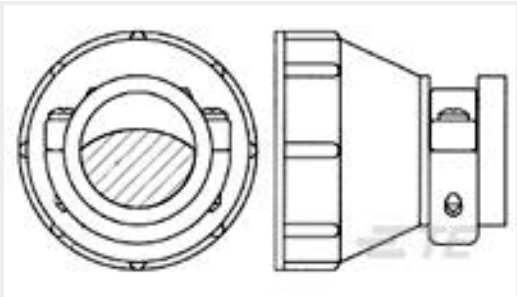
Customers Also Bought



TE Part #206043-3
17-14 CPC REC FREE HANGING



TE Part #183039-1
SIZE 17-14 CPC PLUG ASS'YSTD S



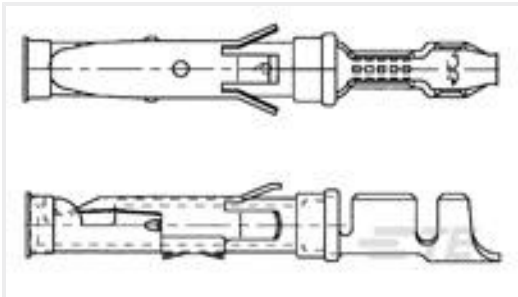
TE Part #182661-1
CPC Cable Clamp Kit, Size 17, Large, UV



TE Part #206043-1
RECEPT,SZ 17-14 CPC



TE Part #206070-8
CABLE CLAMP KIT #17



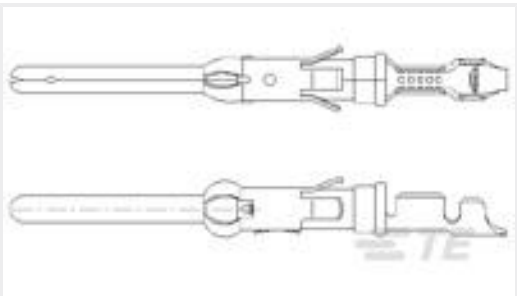
TE Part #163088-1
062 SOC.ASS. TYP3+



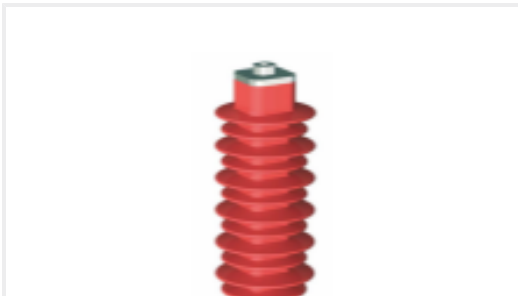
TE Part #1-66105-9
III+ SKT,24-20,TIN,LP



TE Part #1-66103-8
III+ PIN,24-20,TIN,LP



TE Part #163086-2
LOOSE PIECE PIN TYPEIII+ CONTACT SIZE 16



TE Part #EN4839-000
HDA-24MA-B3-NFH

Documents



Product Drawings

17-14 CPC PLUG RS

English

CAD Files

3D PDF

English

Customer View Model

ENG_CVM_182649-1_B2.2d_dxf.zip

English

Customer View Model

ENG_CVM_182649-1_B2.3d_igs.zip

English

Customer View Model

ENG_CVM_182649-1_B2.3d_stp.zip

English

3D PDF

3D

Customer View Model

ENG_CVM_CVM_182649-1_B.2d_dxf.zip

English

Customer View Model

ENG_CVM_CVM_182649-1_B.3d_igs.zip

English

Customer View Model

ENG_CVM_CVM_182649-1_B.3d_stp.zip

English

By downloading the CAD file I accept and agree to the [Terms and Conditions](#) of use.

Agency Approvals

UL Report

English