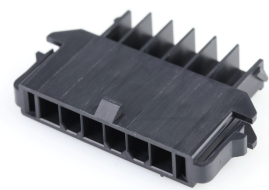




Part Number : [2004880006](#)
Product Description : Mini-Fit TPA2 Plug Housing, 4.20mm Pitch, Single Row, UL 94V-0, Low-Halogen, Panel Mount, 6 Circuits
Series Number : 200488
Status : Active
Product Category : Connector Housings



Documents & Resources

Drawings

[2004880006_sd.pdf](#)
[2004880000-PK-000.pdf](#)

3D Models and Design Files

[2004880006_stp.zip](#)

Specifications

[AS-172718-0000-001.pdf](#)
[PS-172718-0000-001.pdf](#)
[1727180002-TS-000.pdf](#)
[1727180003-TS-000.pdf](#)

Product Environment Compliance

Compliance

| | |
|--------------------|--|
| GADSL/IMDS | Not Relevant |
| China RoHS | Not Relevant |
| EU ELV | Not Relevant |
| Low-Halogen Status | Not Relevant |
| REACH SVHC | Not Contained per D(2024)6225-DC (07 Nov 2024) |
| EU RoHS | Compliant per EU 2015/863 |

Multiple Part Product Compliance Statements

- Eu RoHS
- REACH SVHC
- Low-Halogen

Multiple Part Industry Compliance Documents

- IPC 1752A Class C
- IPC 1752A Class D
- Molex Product Compliance Declaration
- IEC-62474
- chemSHERPA (xml)

EU RoHS Certificate of Compliance

Part Details

General

| | |
|--------------|--|
| Status | Active |
| Category | Connector Housings |
| Series | 200488 |
| Description | Mini-Fit TPA2 Plug Housing, 4.20mm Pitch, Single Row, UL 94V-0, Low-Halogen, Panel Mount, 6 Circuits |
| Application | Power, Wire-to-Board, Wire-to-Wire |
| Comments | See product specification for current derating information. |
| Product Name | Mini-Fit TPA2 |
| UPC | 889056436465 |

Agency

| | |
|----|--------|
| UL | E29179 |
|----|--------|

Physical

| | |
|---------------------|---------|
| Circuits (maximum) | 6 |
| Color - Resin | Black |
| Flammability | 94V-0 |
| Gender | Plug |
| Glow-Wire Capable | No |
| Lock to Mating Part | Yes |
| Material - Resin | Nylon |
| Net Weight | 2.680/g |
| Number of Rows | 1 |
| Packaging Type | Bag |
| Panel Mount | Yes |

| | |
|-------------------------------|----------------|
| Pitch - Mating Interface | 4.20mm |
| Pitch - Termination Interface | 4.20mm |
| Polarized to Mating Part | Yes |
| Stackable | No |
| Temperature Range - Operating | -40° to +105°C |

Mates With / Use With

Mates with Part(s)

| Description | Part Number |
|---|---------------|
| Mini-Fit TPA2 and Mini-Fit Sigma Single Row Receptacle Housings | <u>200453</u> |
| Mini-Fit Jr. Receptacle Housings | <u>5557</u> |
| Mini-Fit TPA2-to-Mini-Fit TPA2 Off-the-Shelf (OTS) Cable Assemblies | <u>145135</u> |

Use with Part(s)

| Description | Part Number |
|--|---------------|
| Mini-Fit TPA2/Sigma Male Crimp Terminals | <u>172765</u> |
| Mini-Fit TPA2 and Mini-Fit Sigma Terminal Position Assurance (TPA) Retainers | <u>172709</u> |