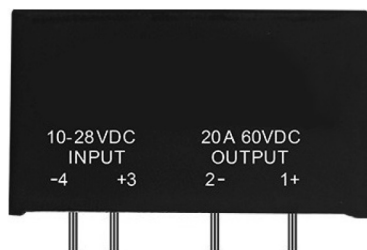


Solid State Relay

Single Phase DC Output

multicompPRO

**RoHS
Compliant**



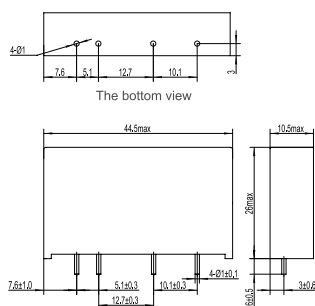
Features

- 2500V ACrms or 4000V ACrms Dielectric Strength
- Circuit Board Mounting Mode
- Transistor Output or MOSFE Output

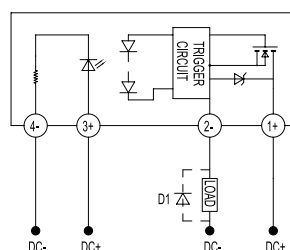
Specification

Load Current : 0.1A-20A
Rated Voltage : 60V DC, 100V DC, 200V DC, 400V DC
Control Voltage : 3-10V DC, 10-28V DC

Diagram



Wiring Diagram



Note: When the relay is used for inductive load control, please be sure to use a suppression circuit, just like the drawing above. Both load terminals are inverse parallelled with a fly-wheel diode D1.

D1: Fast Recovery Diode

Part Number Table

Description	Part Number
SSR, Load voltage 0-300V DC, Control Voltage 3-10V DC, 4A, TH	MPKSLE400D3-L

Important Notice : This data sheet and its contents (the "Information") belong to the members of the AVNET group of companies (the "Group") or are licensed to it. No licence is granted for the use of it other than for information purposes in connection with the products to which it relates. No licence of any intellectual property rights is granted. The Information is subject to change without notice and replaces all data sheets previously supplied. The Information supplied is believed to be accurate but the Group assumes no responsibility for its accuracy or completeness, any error in or omission from it or for any use made of it. Users of this data sheet should check for themselves the Information and the suitability of the products for their purpose and not make any assumptions based on information included or omitted. Liability for loss or damage resulting from any reliance on the Information or use of it (including liability resulting from negligence or where the Group was aware of the possibility of such loss or damage arising) is excluded. This will not operate to limit or restrict the Group's liability for death or personal injury resulting from its negligence. Multicomp Pro is the registered trademark of Premier Farnell Limited 2019.

Newark.com/multicomp-pro
Farnell.com/multicomp-pro
sg.element14.com/b/multicomp-pro

multicompPRO