

OLED DISPLAY MODULE

Application Notes

PRODUCT NUMBER	DD-32645C-1A with EVK board
---------------------------	------------------------------------

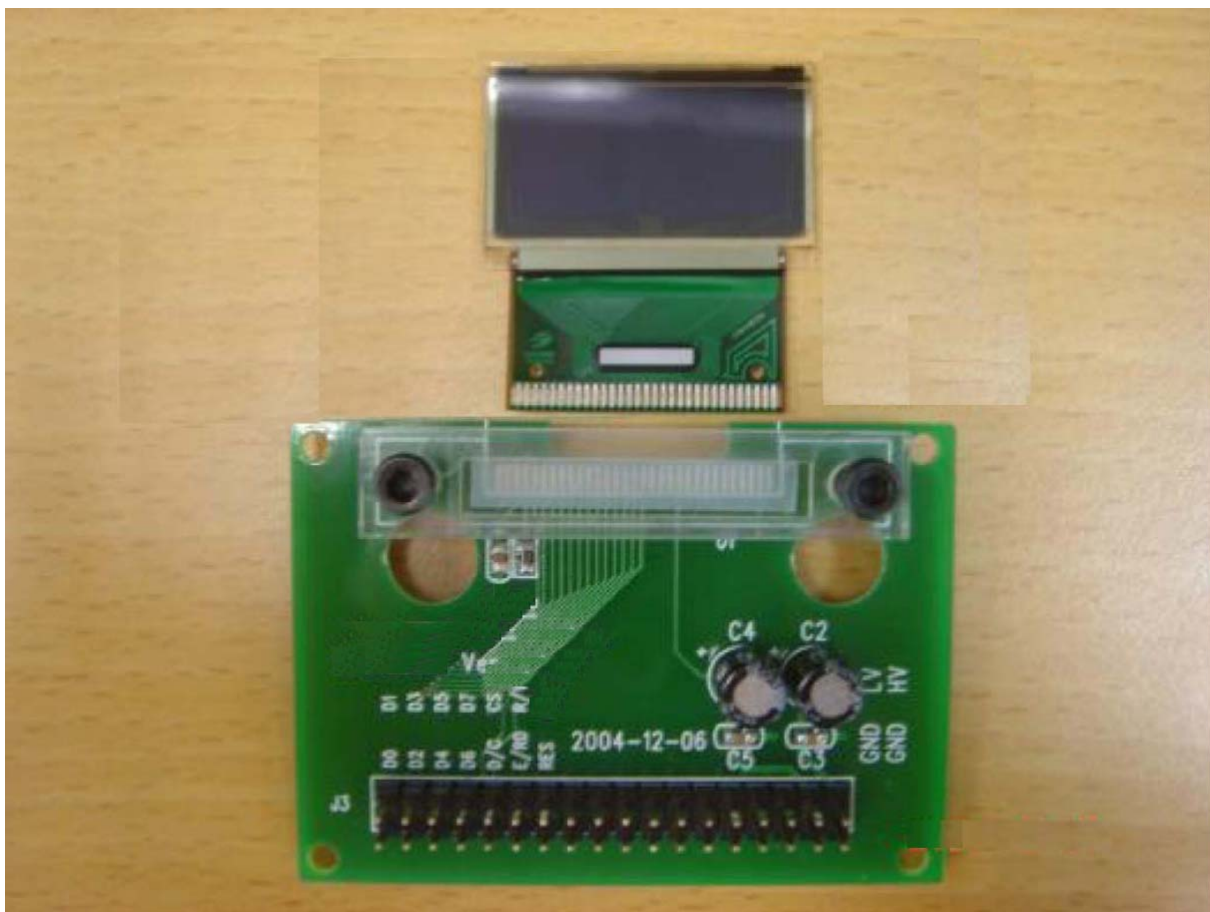


TABLE OF CONTENTS

1	EVK SCHEMATIC.....	4
2	SYMBOL DEFINITION	5
3	TIMING CHARACTERISTICS	6
4	CONNECTION BETWEEN OLED AND EVK	7
5	HOW TO USE THE DD-32645C-1A	9
5.1	RECOMMENDED INITIAL CODE	10

Product No.	DD-32645C-1A	REV. A

Page	2 / 11
------	--------

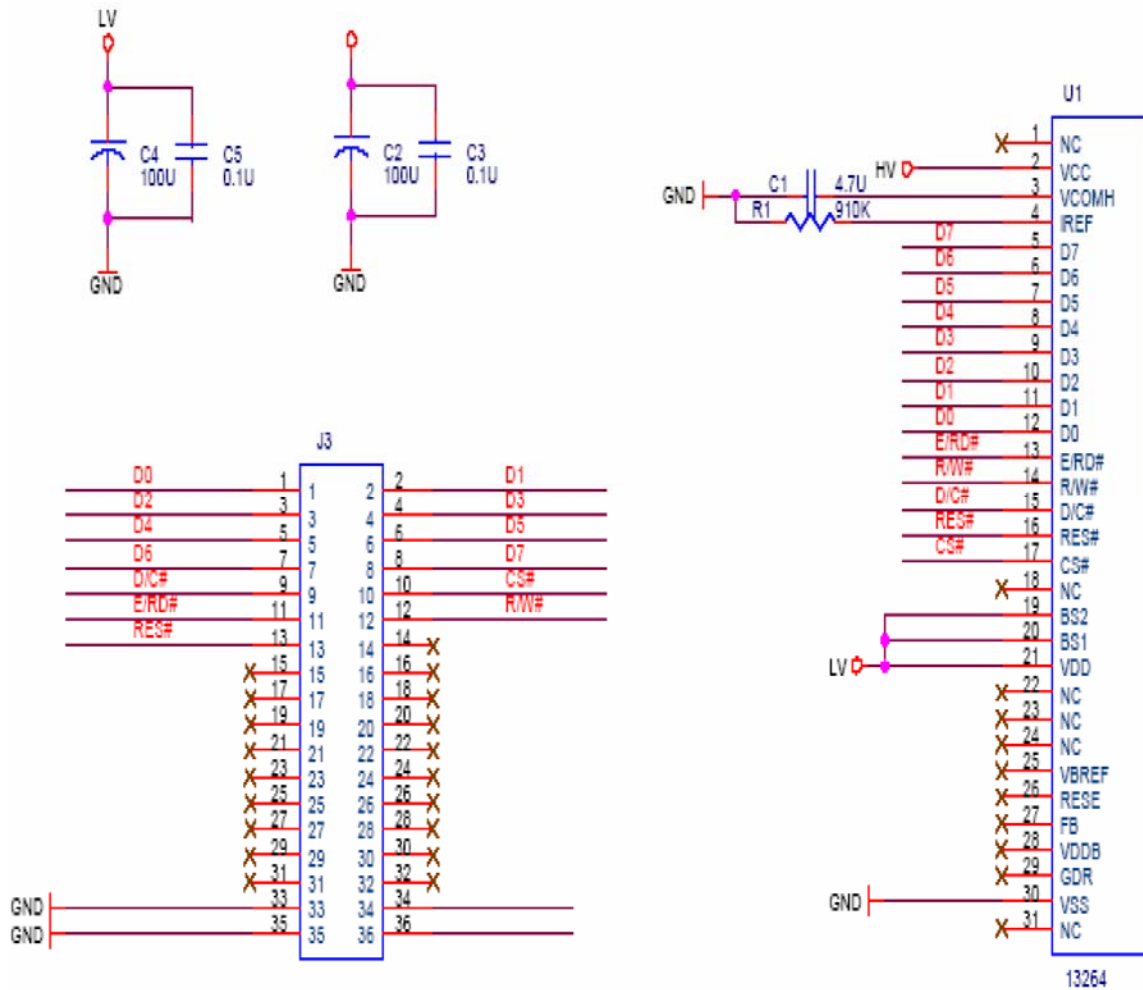
REVISION RECORD

Rev.	Date	Page	Chapt.	Comment	ECR no.
A	21 Jun. 06			First Issue	

Product No.	DD-32645C-1A	REV. A

Page	3 / 11
------	--------

1 EVK Schematic



Product No.	DD-32645C-1A	REV. A

Page	4 / 11
------	--------

2 Symbol Definition

Note: The EVK has been hard wired to 8080 parallel interface

D0-D7 : These pins are 8-bit bi-directional data bus to be connected to the MCU's data bus.

E/RD# : This pin is MCU interface input. When connecting to an 8080-microprocessor, this pin receives the Read (RD) signal. Data read operation is initiated when this pin is pulled low and the chip is selected.

R/W# : This pin is MCU interface input. When 8080 interface mode is selected, this pin is the Write (WR) input. Data write operation is initiated when this pin is pulled low and the chip is selected.

D/C# : This pin is Data/Command control pin. When the pin is pulled high, the data at D0-D7 is treated as display data. When the pin is pulled low, the data at D0-D7 is transferred to the command register. For detail relationship to MCU interface signals, please refer to the timing characteristics diagrams at following pages and datasheet.

RES# : This pin is reset signal input. When the pin is low, initialization of the chip is executed.

CS# : This pin is the chip select input. The chip is enabled for MCU communication only when CS is pulled low.

HV: This is the most positive voltage supply pin of the chip.

LV : Power supply pin for logic operation of the driver.

VCC : This is the most positive voltage supply pin of the chip.

VSS : This is the ground pin and also acts as a reference for logic pins and OLED driving voltages. This should be connected to the external ground

VCOMH : This is an input pin for the voltage output high level for COM signals. A capacitor should be connected between this pin and VSS.

NC : Dummy pad, do not group or short NC pins together.

Product No.	DD-32645C-1A	REV. A

Page	5 / 11
------	--------

3 Timing characteristics

VDD = 2.4 to 3.5V, TA= -40to 85°C

Symbol	Parameter	Min	Typ	Max	Unit
t_{cycle}	Clock Cycle Time	300	-	-	ns
t_{AS}	Address Setup Time	0	-	-	ns
t_{AH}	Address Hold Time	0	-	-	ns
t_{DSW}	Write Data Setup Time	40	-	-	ns
t_{DHW}	Write Data Hold Time	15	-	-	ns
t_{DHR}	Read Data Hold Time	20	-	-	ns
t_{OH}	Output Disable Time	-	-	70	ns
t_{ACC}	Access Time	-	-	140	ns
PW_{CSL}	Chip Select Low Pulse Width (read) Chip Select Low Pulse Width (write)	120 60	-	-	ns
PW_{CSH}	Chip Select High Pulse Width (read) Chip Select High Pulse Width (write)	60 60	-	-	ns
t_R	Rise Time	-	-	15	ns
t_F	Fall Time	-	-	15	ns

Table 3 8080-Series MPU Parallel Interface Timing Characteristics

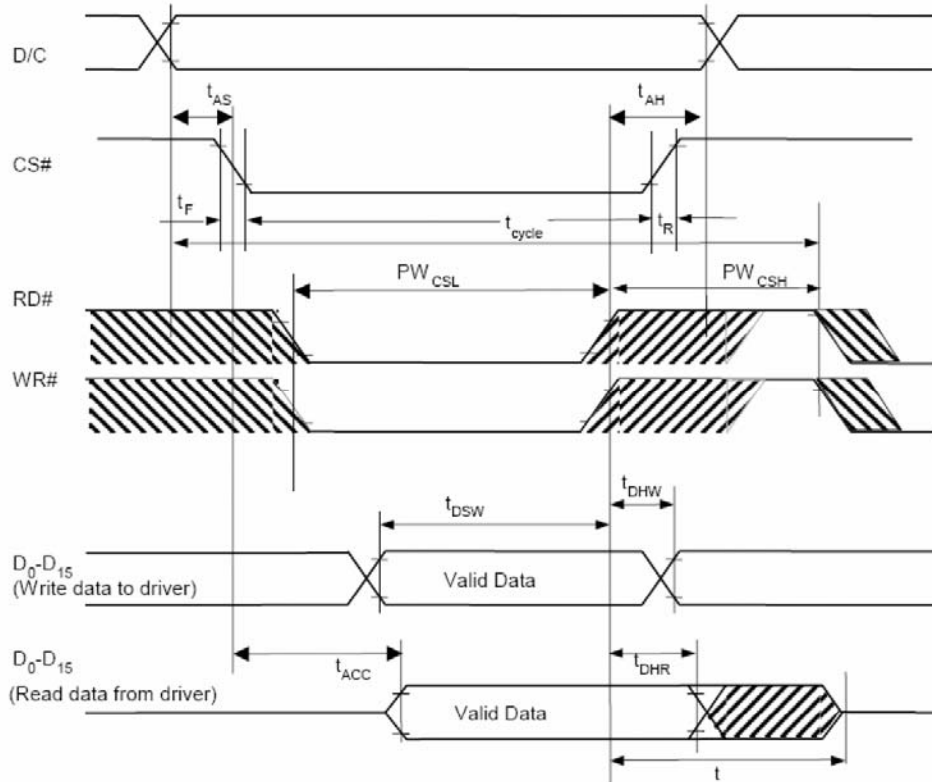


Figure 1 8080-series MPU parallel interface characteristics

Product No.	DD-32645C-1A	REV. A

Page	6 / 11
------	--------

4 Connection Between OLED and EVK

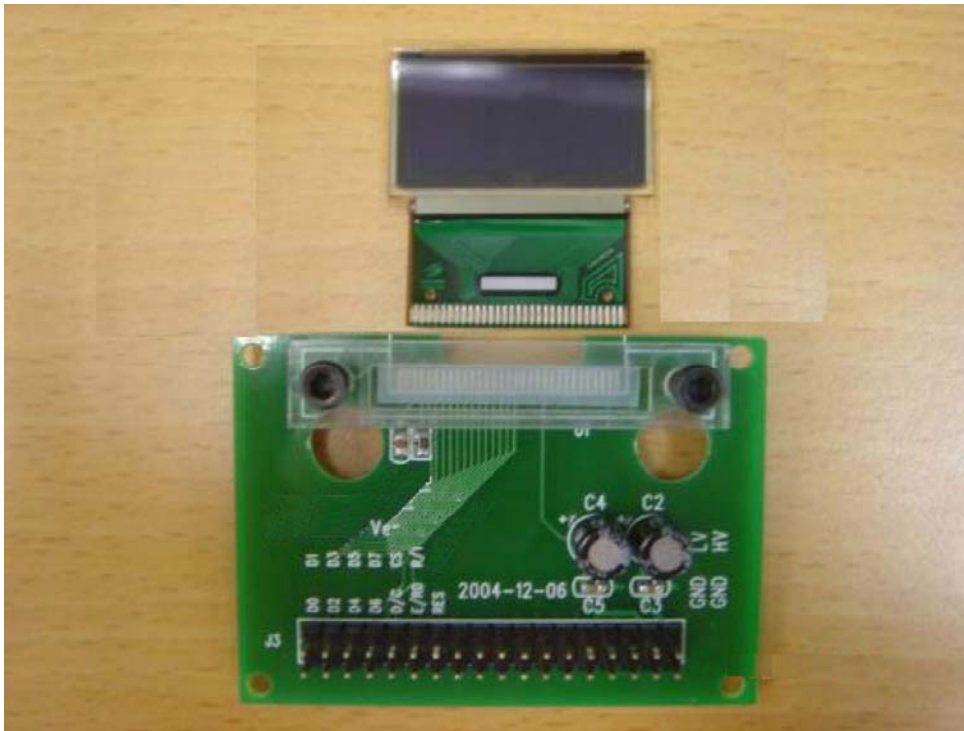


Figure 2 EVK PCB and DD-32645C-1A Module

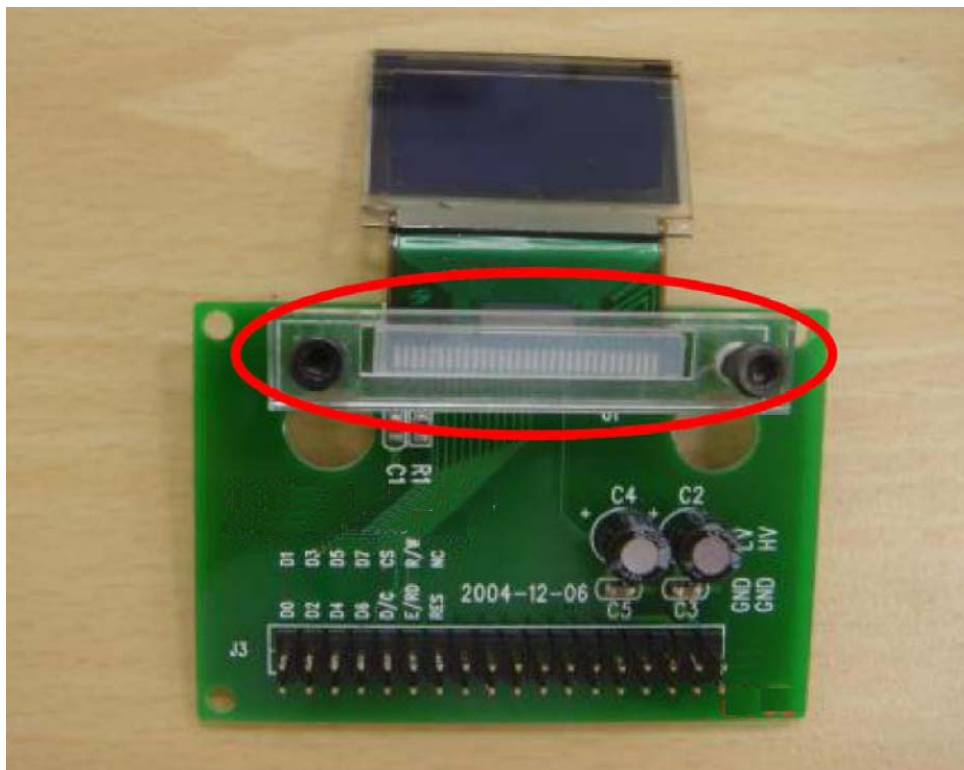


Figure 3 the DD-32645C-1A and EVK assembled (Top view)

Product No.	DD-32645C-1A	REV. A

Page	7 / 11
------	--------

As the package is TCP, the connector pads are double sided. When assembling the OLED, make sure it in the right direction as shown in Figure 3 and tightened with the two hexagonal bolts.

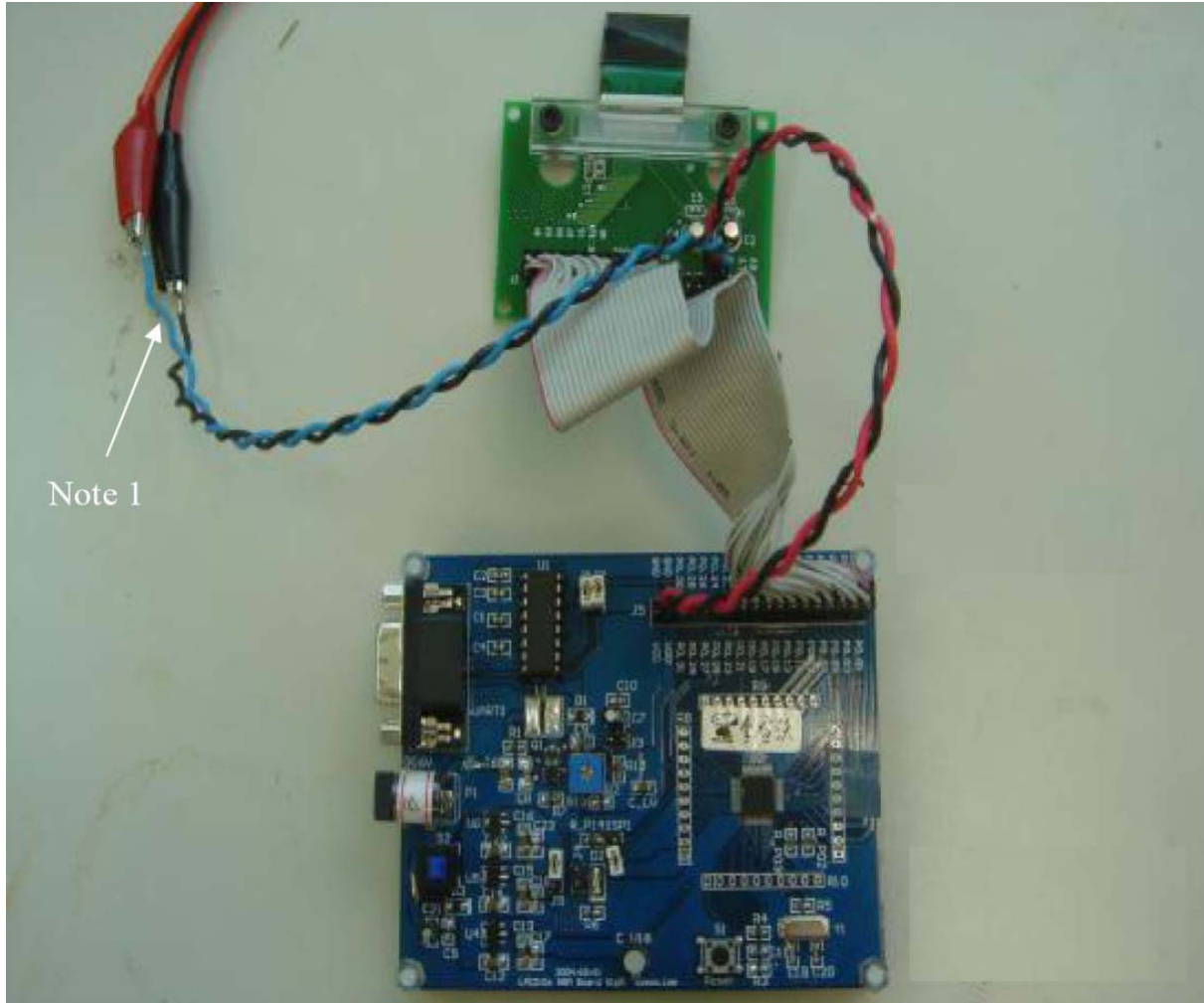


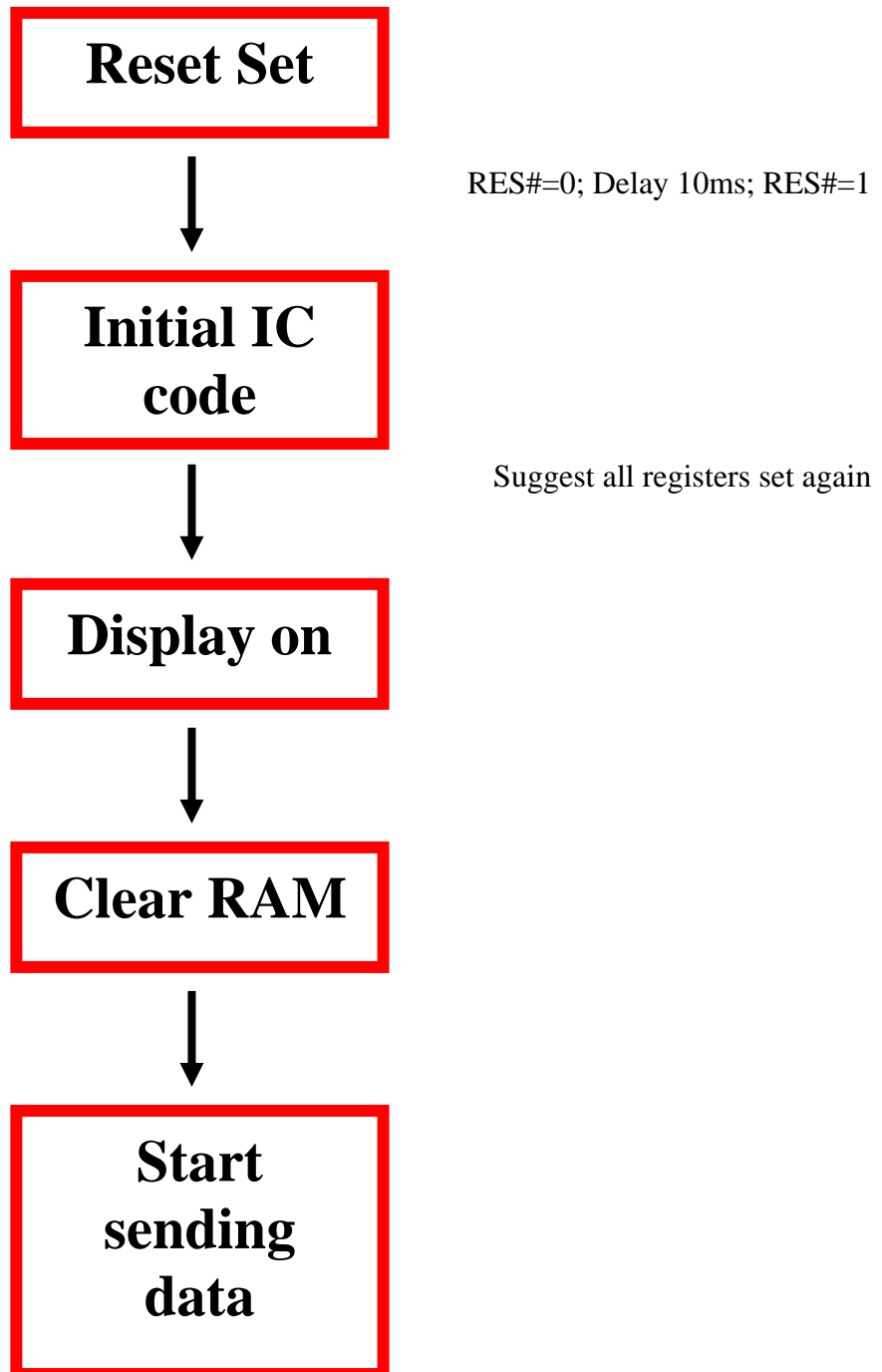
Figure 4 control MCU (not supplied) connected with EVK

Note 1 : It is the external most positive voltage supply. In this sample is connected to power supply.

Product No.	DD-32645C-1A	REV. A

Page	8 / 11
------	--------

5 How to use the DD-32645C-1A



Product No.	DD-32645C-1A	REV. A

Page	9 / 11
------	--------

5.1 Recommended Initial code

```

void initial(void)
{
    BS1=1;           // use 8080 interface
    BS2=1;
    DC=0;
    WR=0;
    RD=0;
    CS=0;
    RES=0;
    delay(100);
    RES=1;
    write_c(0xAE);   //display off
    write_c(0x81);   //set contrast
    write_c(0xff);   //max current
    write_c(0xa8);   //set duty
    write_c(0x3F);   //duty 63
    write_c(0xA0);   //Set Segment Re-map
    write_c(0xd3);   //display offset
    write_c(0x00);   //set 00
    write_c(0x40);   //Start line
    write_c(0xC8);   //Set COM Output Scan Direction
    write_c(0xda);   //Set COM pins hardware configuration
    write_c(0x12);   //Set COM pins hardware configuration
    write_c(0xD9);   //Set precharge
    write_c(0xf1);   //precharge=fh , discharge=1h
    write_c(0xDB);   //Set VcomH
    write_c(0x49);   //VcomH=73
    write_c(0xA4);   //Normal Mode
    write_c(0xA6);   //No Inverse
    write_c(0xAF);   //display on
}

```

```

void write_c(unsigned char ins_c)
{
    DC=0;
    CS=0;
    RD=1; /*tell system only write*/
    WR=0;
    d_bus=ins_c;
    WR=1;
    CS=1;
    DC=1;
}

```

Product No.	DD-32645C-1A	REV. A

Page	10 / 11
------	---------

```

void write_d(unsigned char ins_d)
{
    DC=1;
    CS=0;
    RD=1; /*tell system only write*/
    WR=0;
    d_bus=ins_d;
    CS=1;
    WR=1;
    DC=1;
}

```

```

void delay(int count)
{
    int i,j;
    for(i=0;i<=count;i++)
        for(j=0;j<=1000;j++)
;
}

```

* write_c= Write Command , write_d= Write Data

Product No.	DD-32645C-1A	REV. A

Page	11 / 11
------	---------

OLED DISPLAY MODULE

Application Notes

PRODUCT NUMBER	DD-2864BY-1A with EVK board
---------------------------	------------------------------------

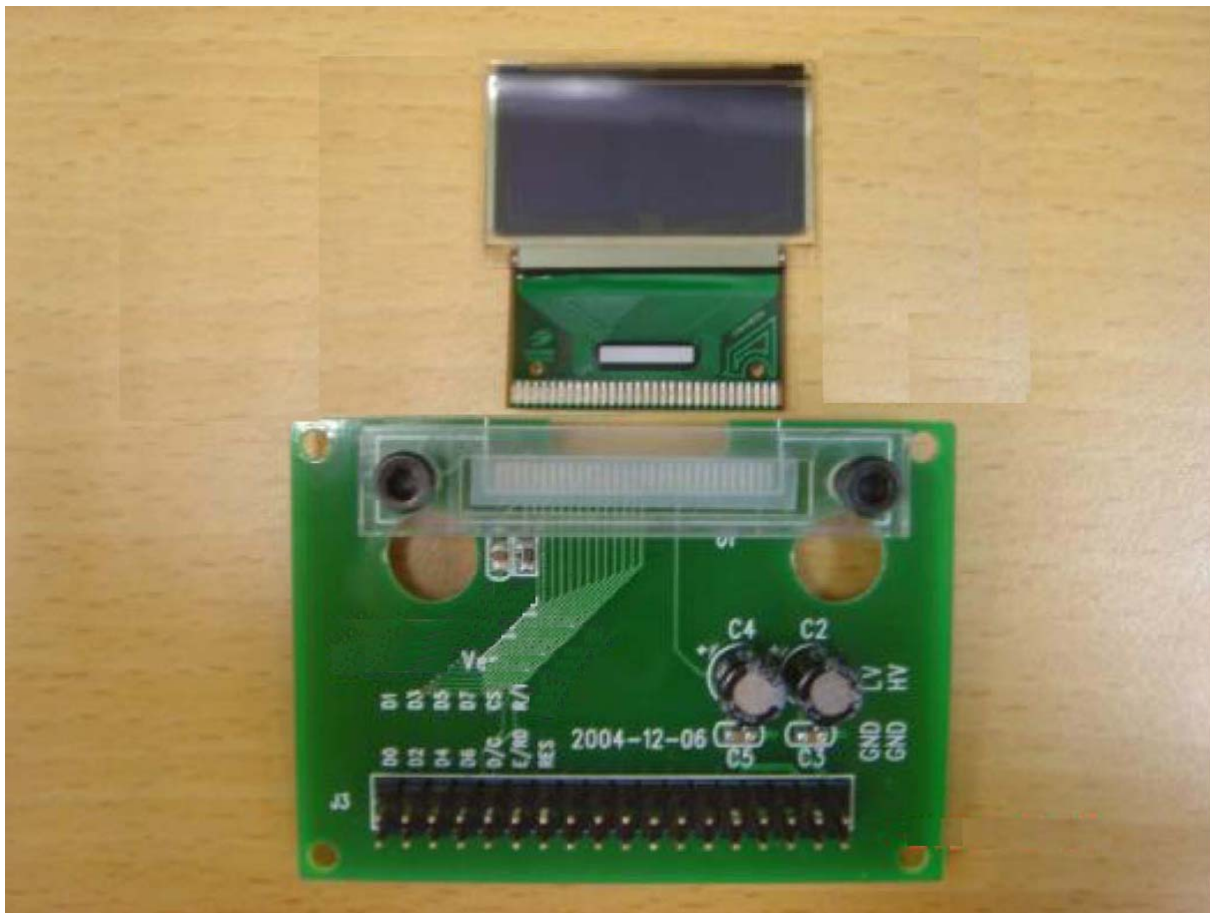


TABLE OF CONTENTS

1	EVK SCHEMATIC.....	4
2	SYMBOL DEFINITION	5
3	TIMING CHARACTERISTICS	6
4	CONNECTION BETWEEN OLED AND EVK	8
5	HOW TO USE THE DD-2864BY-1A.....	10
5.1	RECOMMENDED INITIAL CODE	11

Product No.	DD-2864BY-1A	REV. A

Page	2 / 12
------	--------

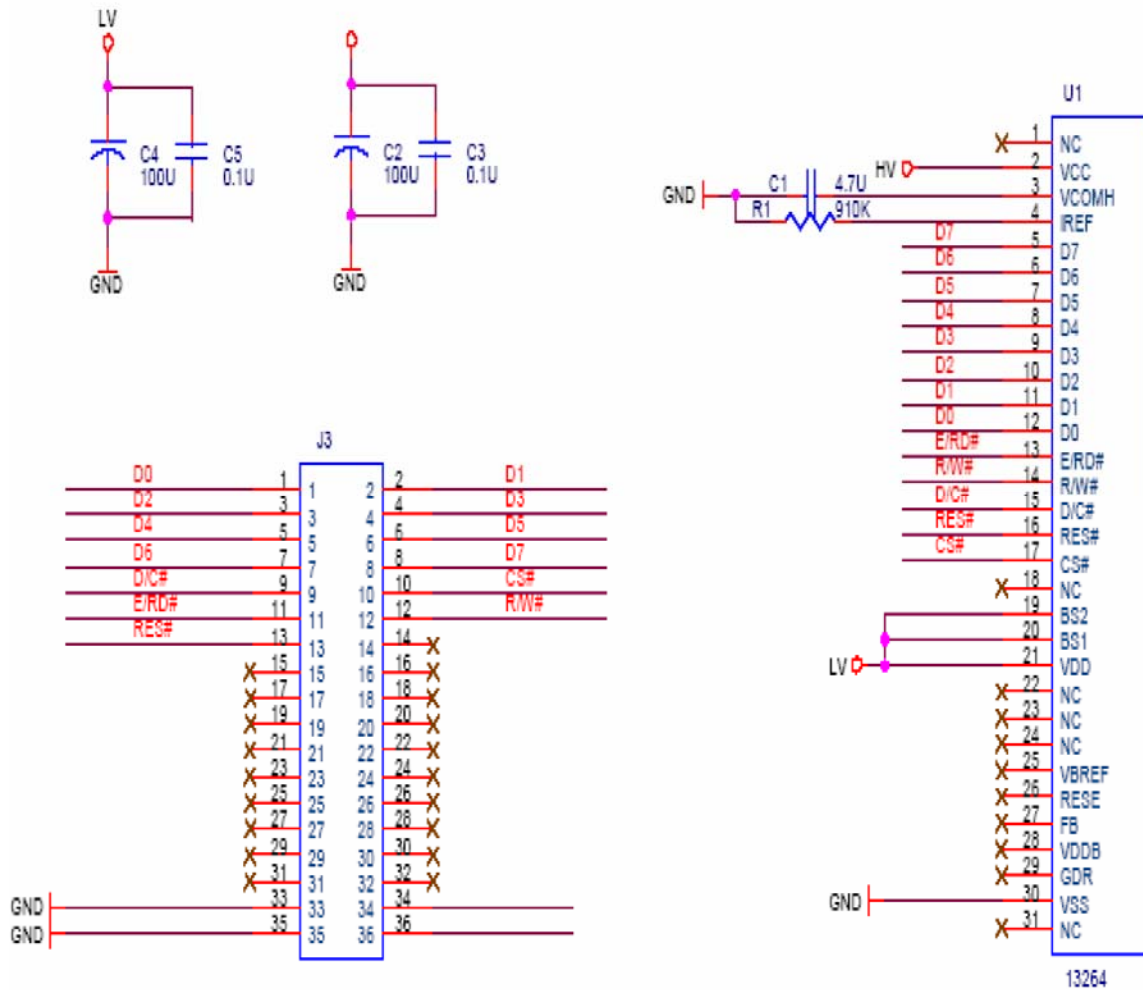
REVISION RECORD

Rev.	Date	Page	Chapt.	Comment	ECR no.
A	24 Nov 06			First Issue	

Product No.	DD-2864BY-1A	REV. A

Page	3 / 12
------	--------

1 EVK Schematic



Product No.	DD-2864BY-1A	REV. A

Page	4 / 12
------	--------

2 Symbol Definition

Note: The EVK has been hard wired to 8080 parallel interface

D0-D7 : These pins are 8-bit bi-directional data bus to be connected to the MCU's data bus.

E/RD# : This pin is MCU interface input. When connecting to an 8080-microprocessor, this pin receives the Read (RD) signal. Data read operation is initiated when this pin is pulled low and the chip is selected.

R/W# : This pin is MCU interface input. When 8080 interface mode is selected, this pin is the Write (WR) input. Data write operation is initiated when this pin is pulled low and the chip is selected.

D/C# : This pin is Data/Command control pin. When the pin is pulled high, the data at D0-D7 is treated as display data. When the pin is pulled low, the data at D0-D7 is transferred to the command register. For detail relationship to MCU interface signals, please refer to the timing characteristics diagrams at following pages and datasheet.

RES# : This pin is reset signal input. When the pin is low, initialization of the chip is executed.

CS# : This pin is the chip select input. The chip is enabled for MCU communication only when CS is pulled low.

HV: This is the most positive voltage supply pin of the chip.

LV : Power supply pin for logic operation of the driver.

VCC : This is the most positive voltage supply pin of the chip.

VSS : This is the ground pin and also acts as a reference for logic pins and OLED driving voltages. This should be connected to the external ground

VCOMH : This is an input pin for the voltage output high level for COM signals. A capacitor should be connected between this pin and VSS.

NC : Dummy pad, do not group or short NC pins together.

Product No.	DD-2864BY-1A	REV. A

Page	5 / 12
------	--------

3 Timing characteristics

VDD = 2.4 to 3.5V, TA= -40to 85°C

Symbol	Parameter	Min	Typ	Max	Unit
t_{cycle}	Clock Cycle Time	300	-	-	ns
t_{AS}	Address Setup Time	0	-	-	ns
t_{AH}	Address Hold Time	0	-	-	ns
t_{DSW}	Write Data Setup Time	40	-	-	ns
t_{DHW}	Write Data Hold Time	15	-	-	ns
t_{DHR}	Read Data Hold Time	20	-	-	ns
t_{OH}	Output Disable Time	-	-	70	ns
t_{ACC}	Access Time	-	-	140	ns
PW_{CSL}	Chip Select Low Pulse Width (read)	120	-	-	ns
	Chip Select Low Pulse Width (write)	60	-	-	ns
PW_{CSH}	Chip Select High Pulse Width (read)	60	-	-	ns
	Chip Select High Pulse Width (write)	60	-	-	ns
t_R	Rise Time	-	-	15	ns
t_F	Fall Time	-	-	15	ns

Table 3 8080-Series MPU Parallel Interface Timing Characteristics

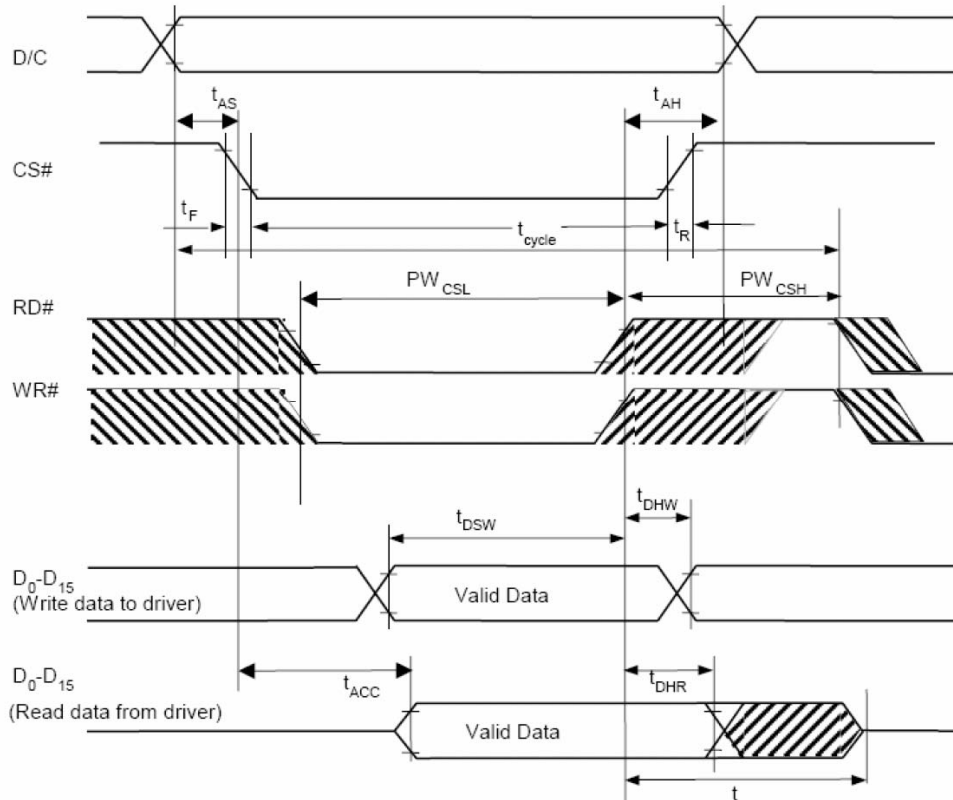


Figure 1 8080-series MPU parallel interface characteristics

Product No.	DD-2864BY-1A	REV. A

Page	6 / 12
------	--------

Product No.	DD-2864BY-1A	REV. A

Page	7 / 12
------	--------

4 Connection Between OLED and EVK

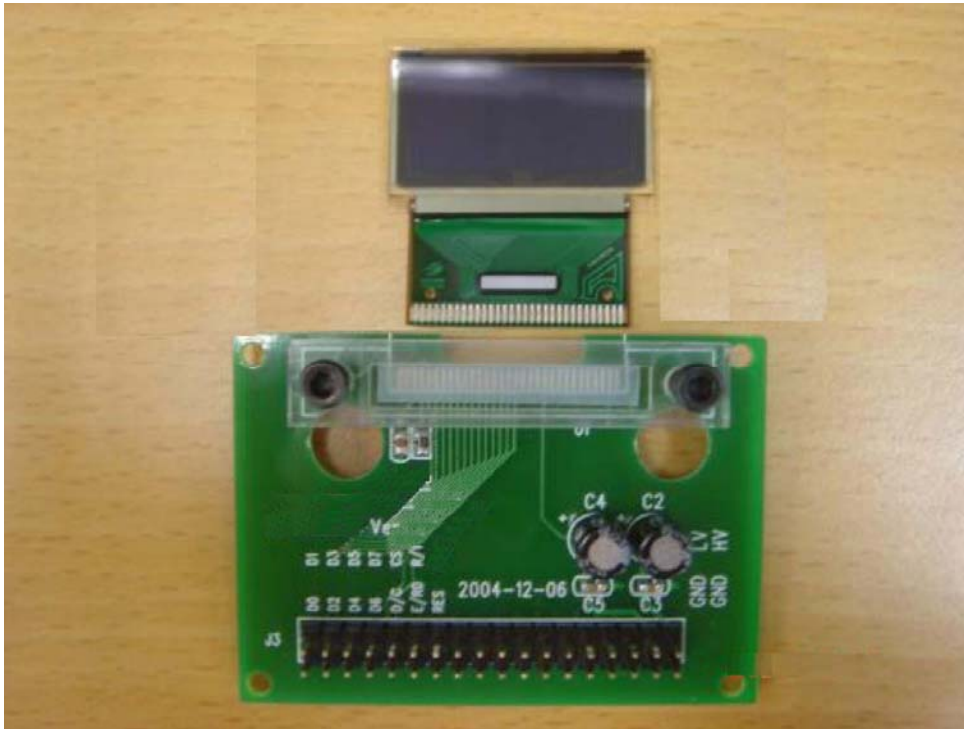


Figure 2 EVK PCB and DD-2864BY-1A Module

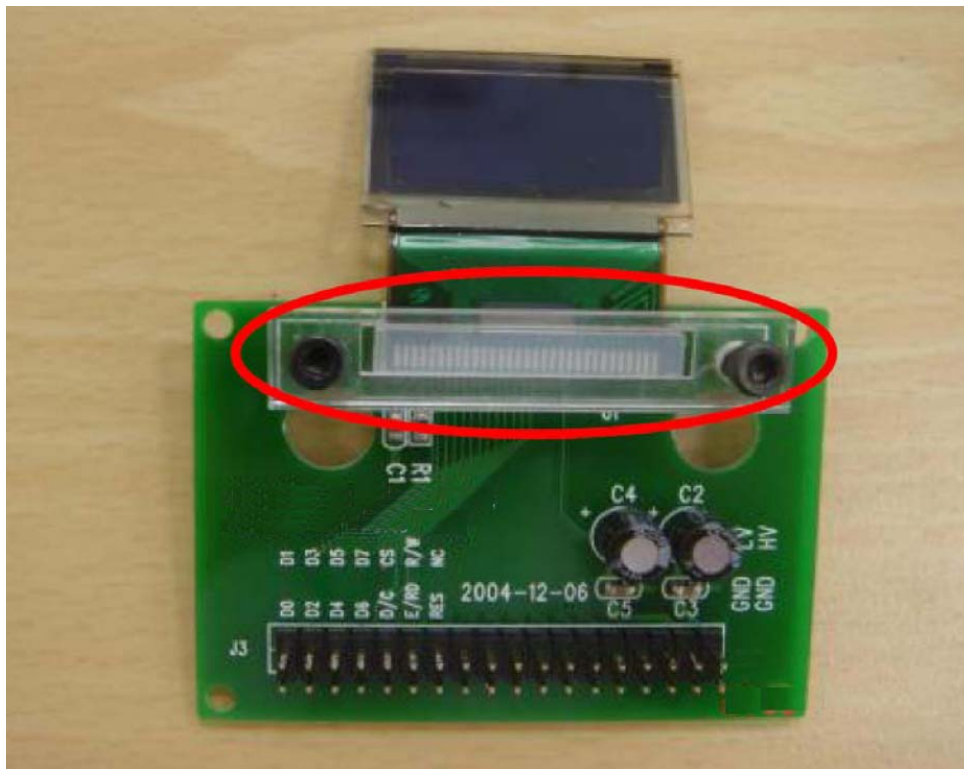


Figure 3 the DD-2864BY-1A and EVK assembled (Top view)

Product No.	DD-2864BY-1A	REV. A

Page	8 / 12
------	--------

As the package is TCP, the connector pads are double sided. When assembling the OLED, make sure it is in the right direction as shown in Figure 3 and tightened with the two hexagonal bolts.

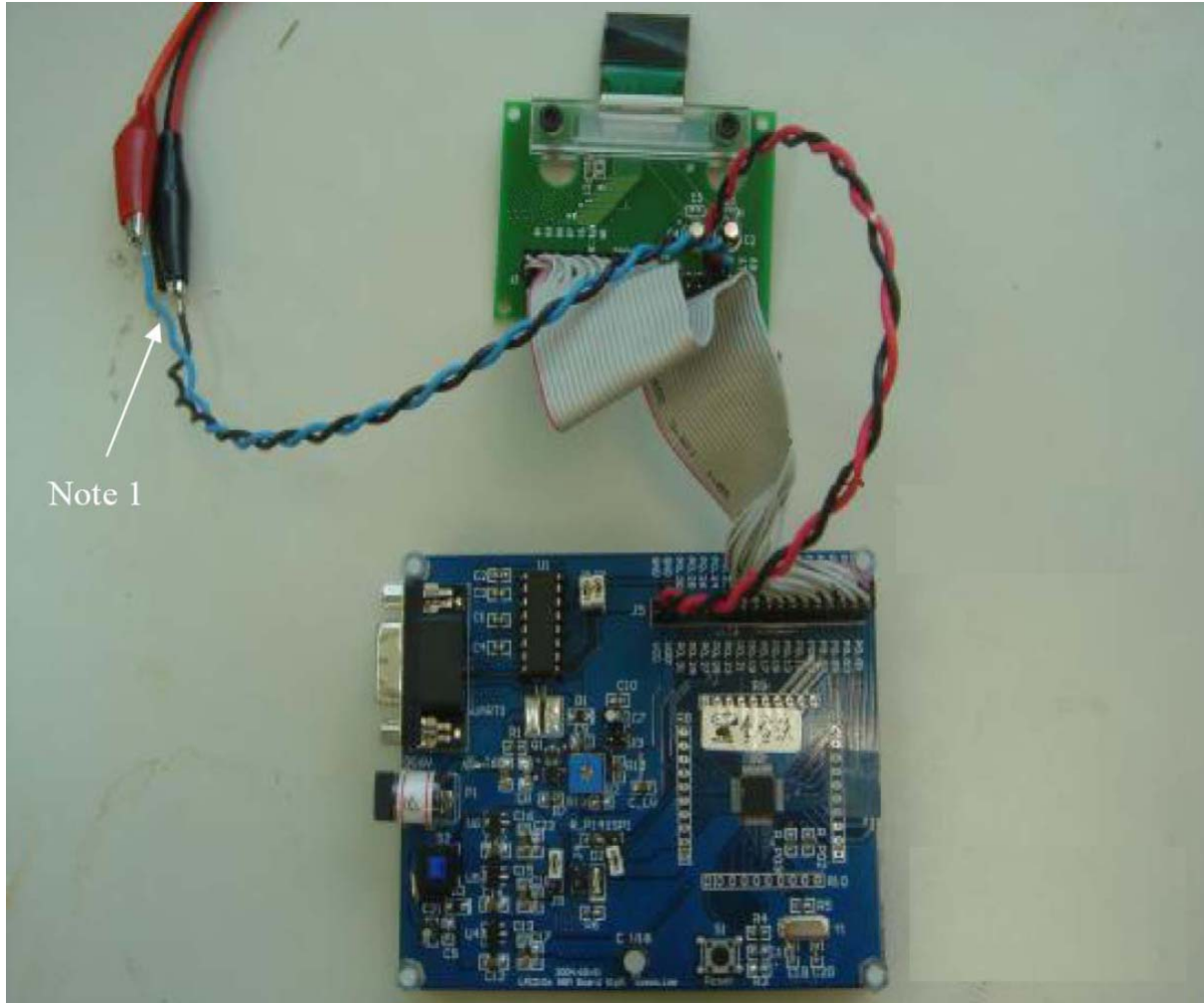


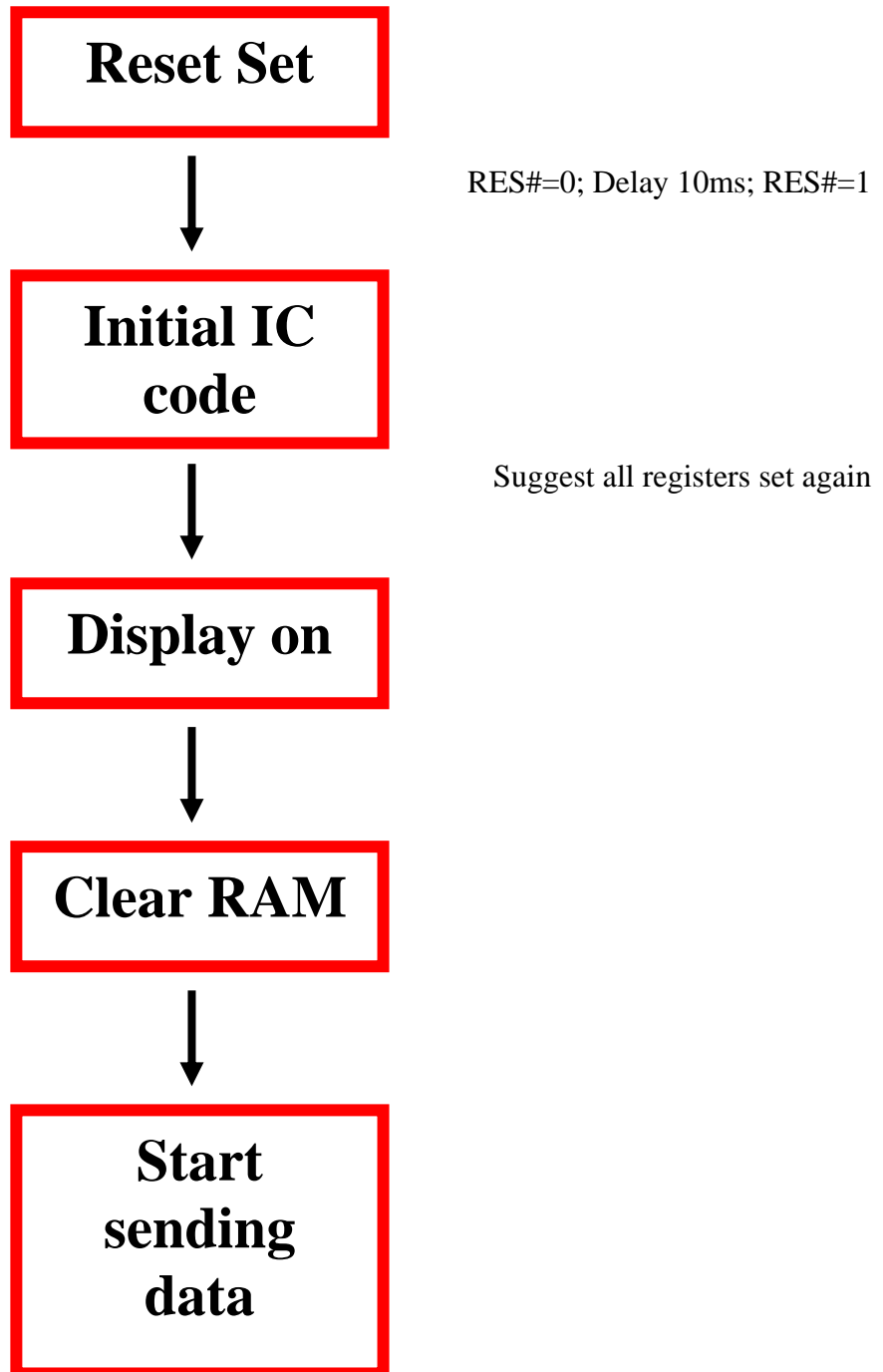
Figure 4 control MCU (not supplied) connected with EVK

Note 1 : It is the external most positive voltage supply. In this sample is connected to power supply.

Product No.	DD-2864BY-1A	REV. A

Page	9 / 12
------	--------

5 How to use the DD-2864BY-1A



Product No.	DD-2864BY-1A	REV. A

Page	10 / 12
------	---------

5.1 Recommended Initial code

```

void initial(void)
{
BS1=1;           // use 8080 interface
BS2=1;
DC=0;
WR=0;
RD=0;
CS=0;
RES=0;
delay(100);
RES=1;
write_c(0xAE);   //display off
write_c(0x81);   //set contrast
write_c(0xff);   //max current
write_c(0xa8);   //set duty
write_c(0x3F);   //duty 63
write_c(0xA0);   //Set Segment Re-map
write_c(0xd3);   //display offset
write_c(0x00);   //set 00
write_c(0x40);   //Start line
write_c(0xC8);   //Set COM Output Scan Direction
write_c(0xda);   //Set COM pins hardware configuration
write_c(0x12);   //Set COM pins hardware configuration
write_c(0xD9);   //Set precharge
write_c(0xf1);   //precharge=fh , discharge=1h
write_c(0xDB);   //Set VcomH
write_c(0x49);   //VcomH=73
write_c(0xA4);   //Normal Mode
write_c(0xA6);   //No Inverse
write_c(0xAF);   //display on
}
void write_c(unsigned char ins_c)
{
DC=0;
CS=0;
RD=1;           /*tell system only write*/
WR=0;
d_bus=ins_c;
WR=1;
CS=1;
DC=1;
}

```

Product No.	DD-2864BY-1A	REV. A

Page	11 / 12
------	---------

```

void write_d(unsigned char ins_d)
{
DC=1;
CS=0;
RD=1;           /*tell system only write*/
WR=0;
d_bus=ins_d;
CS=1;
WR=1;
DC=1;
}
void delay(int count)
{
int i,j;
for(i=0;i<=count;i++)
for(j=0;j<=1000;j++)
;
}
* write_c= Write Command , write_d= Write Data

```

Product No.	DD-2864BY-1A	REV. A

Page	12 / 12
------	---------

OLED DISPLAY MODULE

Application Notes

PRODUCT NUMBER	DD-2832BE-1A with EVK board
-----------------------	------------------------------------

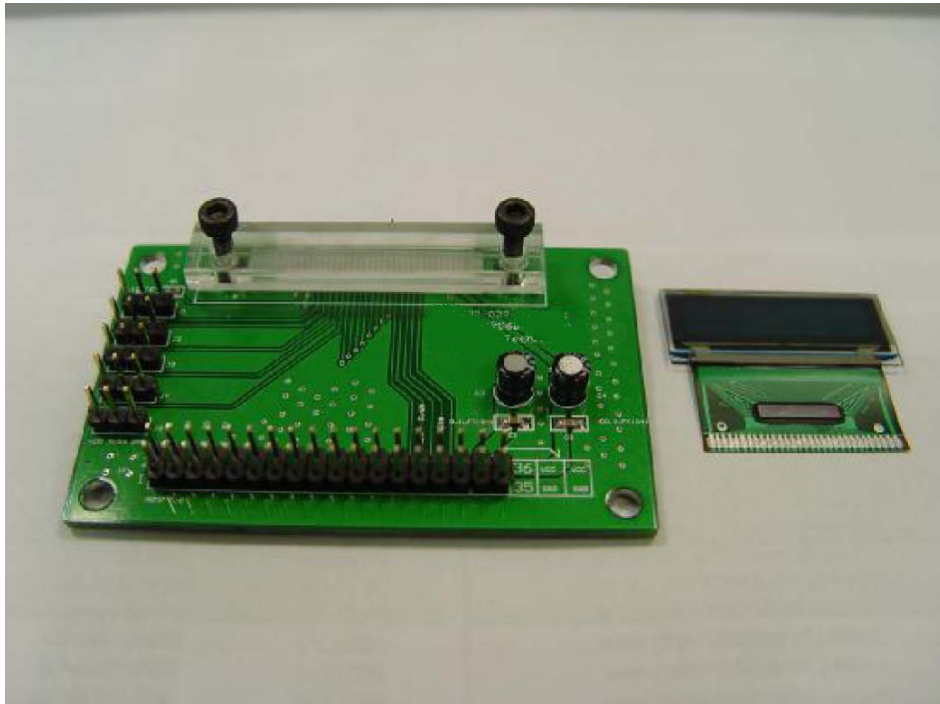


TABLE OF CONTENTS

1	EVK SCHEMATIC	4
2	SYMBOL DEFINITION	5
3	TIMING CHARACTERISTICS	6
4	CONNECTION BETWEEN OLED AND EVK	7
5	HOW TO USE THE DD-2832BE-1A	9
5.1	RECOMMENDED INITIAL CODE	10

Product No.	DD-2832BE-1A	REV. A

Page	2 / 11
------	--------

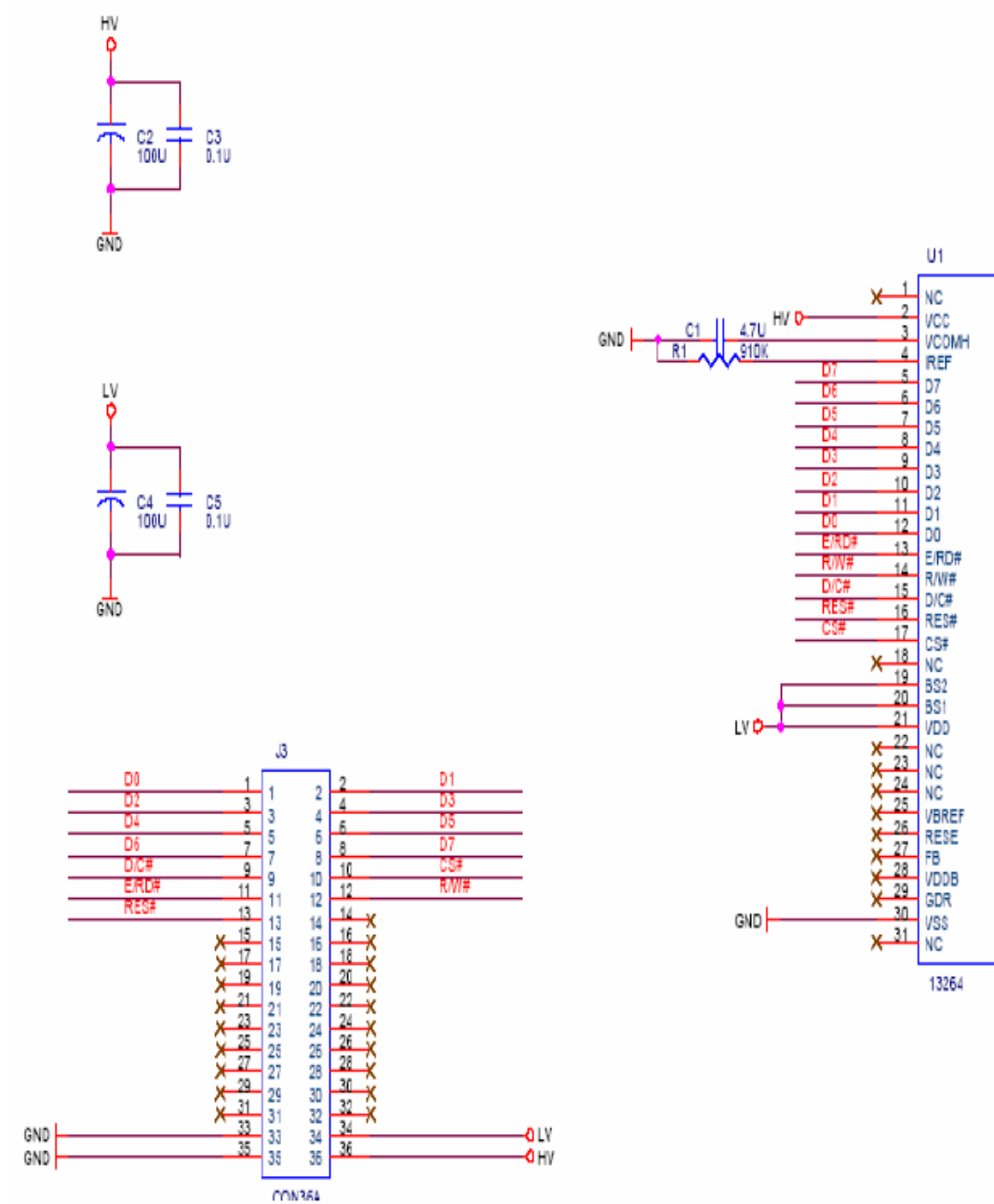
REVISION RECORD

Rev.	Date	Page	Chapt.	Comment	ECR no.
A	21 May. 06			First Issue	
B	10 June 06			Second Issue: change in schematics and code	

Product No.	DD-2832BE-1A	REV. A

Page	3 / 11
------	--------

1 EVK Schematic



Product No.	DD-2832BE-1A	REV. A
-------------	--------------	--------

Page	4 / 11
------	--------

2 Symbol Definition

Note: The EVK has been hard wired to 8080 parallel interface

D0-D7 : These pins are 8-bit bi-directional data bus to be connected to the MCU's data bus.

E/RD# : This pin is MCU interface input. When connecting to an 8080-microprocessor, this pin receives the Read (RD) signal. Data read operation is initiated when this pin is pulled low and the chip is selected.

R/W# : This pin is MCU interface input. When 8080 interface mode is selected, this pin is the Write (WR) input. Data write operation is initiated when this pin is pulled low and the chip is selected.

D/C# : This pin is Data/Command control pin. When the pin is pulled high, the data at D0-D7 is treated as display data. When the pin is pulled low, the data at D7-D0 is transferred to the command register. For detail relationship to MCU interface signals, please refer to the timing characteristics diagrams at following pages and datasheet.

RES# : This pin is reset signal input. When the pin is low, initialization of the chip is executed.

CS# : This pin is the chip select input. The chip is enabled for MCU communication only when CS is pulled low.

HV: This is the most positive voltage supply pin of the chip.

LV : Power supply pin for logic operation of the driver.

VCC : This is the most positive voltage supply pin of the chip.

VSS : This is the ground pin and also acts as a reference for logic pins and OLED driving voltages. This should be connected to the external ground

VCOMH : This is an input pin for the voltage output high level for COM signals. A capacitor should be connected between this pin and VSS.

NC : Dummy pad, do not group or short NC pins together.

Product No.	DD-2832BE-1A	REV. A

Page	5 / 11
------	--------

3 Timing characteristics

VDD = 2.4 to 3.5V, TA= -40to 85°C

Item	Signal	Symbol	Condition	Rating		Units	
				Min	Max		
Address hold time	RS	t_{AH8}		10	—	ns	
Address setup time		t_{AW8}		20	—	ns	
System cycle time	RS	t_{CYC8}		300	—	ns	
Control L pulse width (/WR)	/WR	t_{CCLW}		60	—	ns	
Control L pulse width (/RD)	/RD	t_{CCLR}		120	—	ns	
Control H pulse width (/WR)	/WR	t_{CCHW}		60	—	ns	
Control H pulse width (/RD)	/RD	t_{CCHR}		120	—	ns	
Data setup time	D0 to D7	t_{DS8}		40	—	ns	
Address hold time		t_{DH8}		15	—	ns	
\overline{RD} access time		t_{ACC8}	$C_L=100pF$		—	140	ns
Output disable time		t_{OH8}			—	70	ns
Rise Time		t_R		—	15	ns	
Fall Time		t_F		—	15	ns	

Table 2 8080-Series MPU Parallel Interface Timing Characteristics

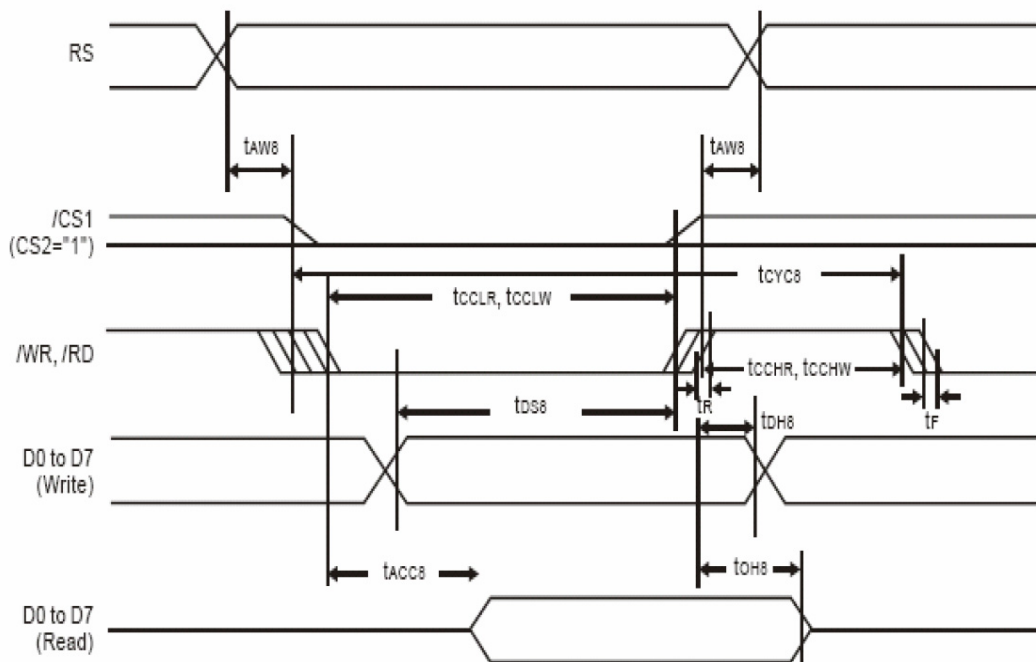


Figure 2 8080-series MPU parallel interface characteristics

Product No.	DD-2832BE-1A	REV. A
-------------	--------------	--------

Page	6 / 11
------	--------

Connection Between OLED and EVK

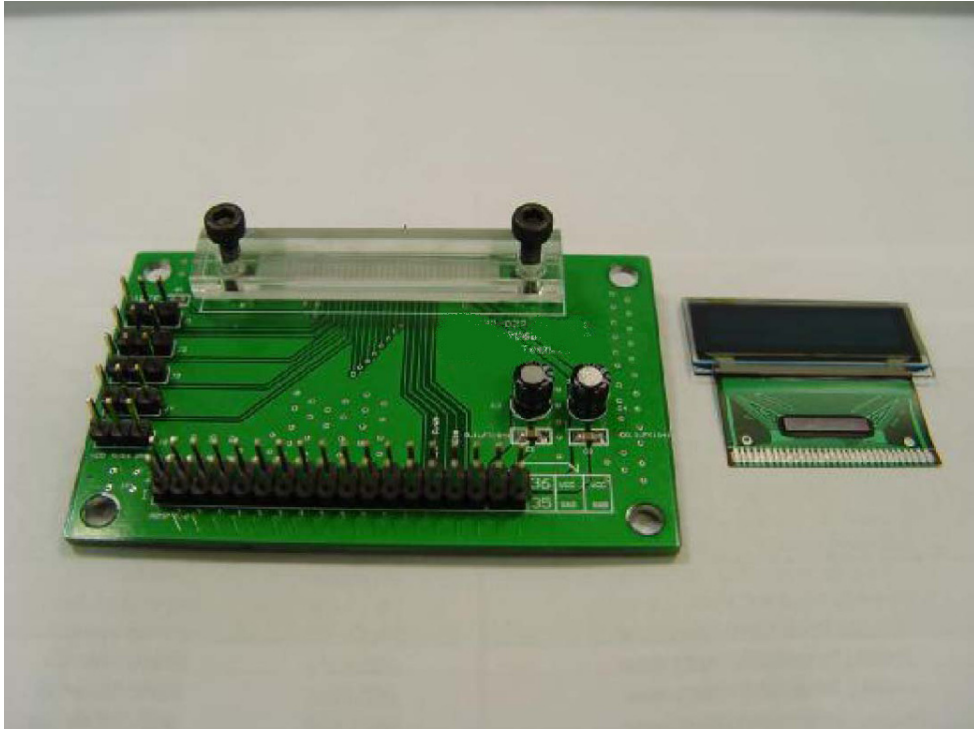


Figure 5 EVK PCB and DD-2832BE-1A Module

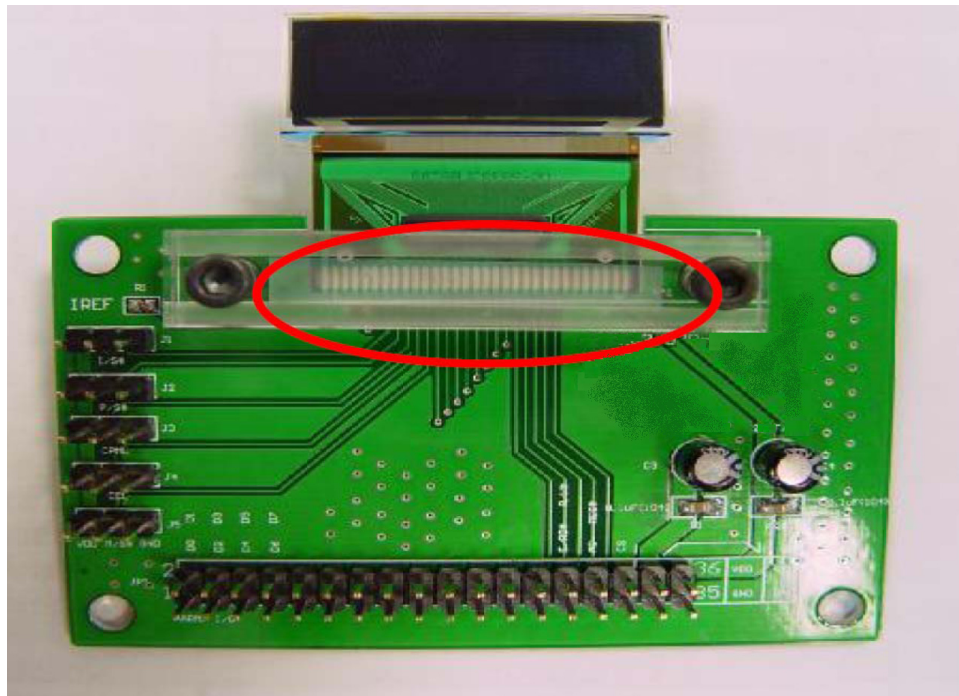


Figure 6 the DD-2832BE-1A and EVK assembled (Top view)

Product No.	DD-2832BE-1A	REV. A

Page	7 / 11
------	--------

As the package is TCP, the connector pads are double sided. When assembling the OLED, make sure it is in the right direction as shown in Figure 6 and tightened with the two hexagonal bolts.

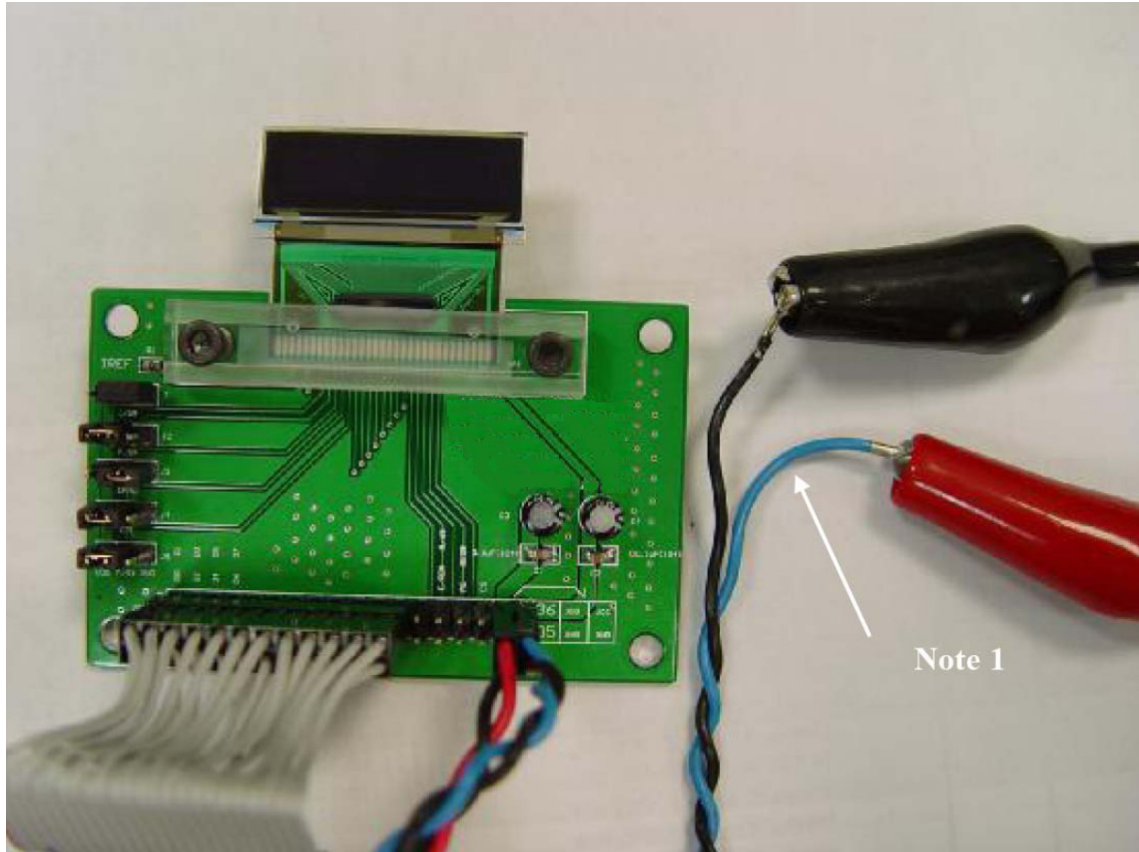


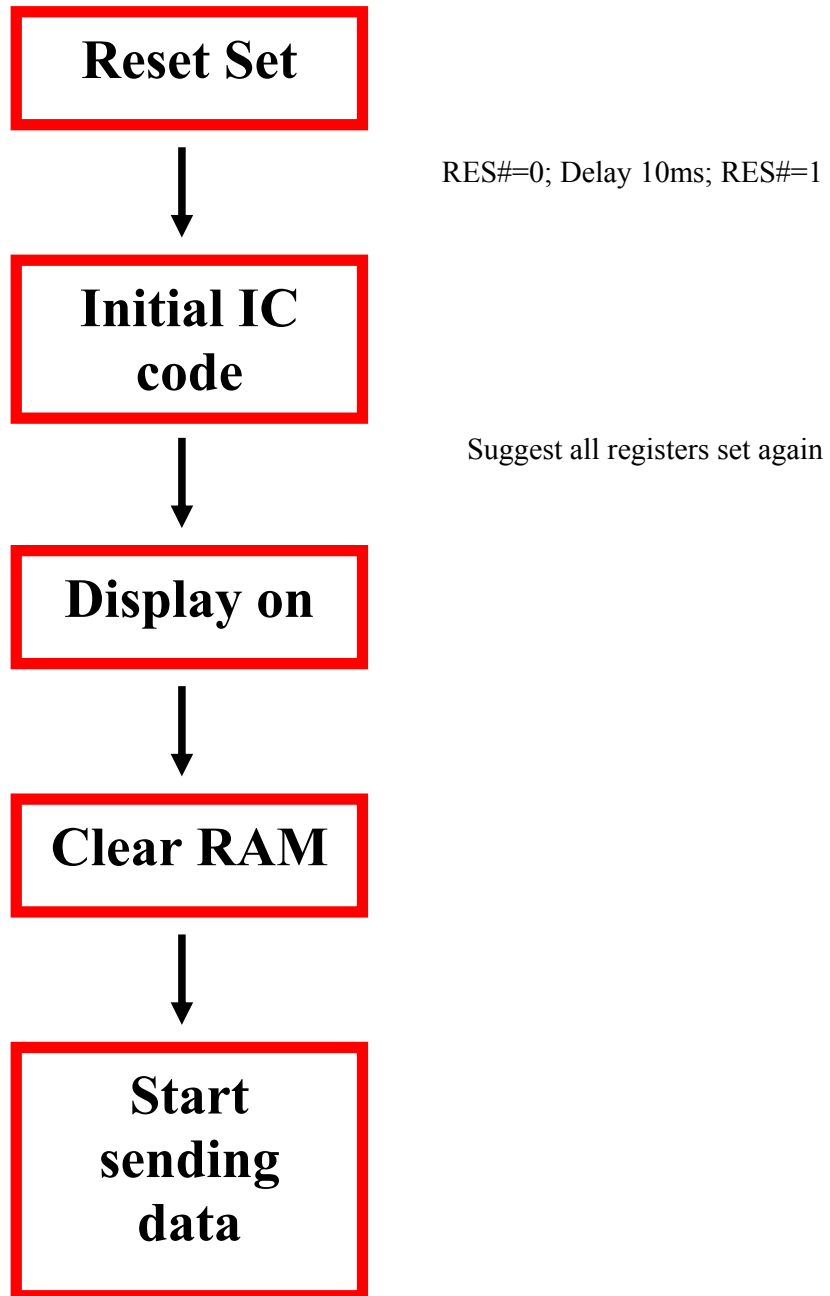
Figure 7 control MCU (not supplied) connected with EVK

Note 1 : It is the external most positive voltage supply. In this sample is connected to power supply.

Product No.	DD-2832BE-1A	REV. A

Page	8 / 11
------	--------

4 How to use the DD-2832BE-1A



Product No.	DD-2832BE-1A	REV. A

Page	9 / 11
------	--------

4.1 Recommended Initial code

```

void initial(void)
{
BS1=1;           // use 8080 interface
BS2=1;
DC=0;
WR=0;
RD=0;
CS=0;
RES=0;
delay(100);
RES=1;
write_c(0xAE);   //display off
write_c(0x81);   //set contrast
write_c(0xff);   //max current
write_c(0xa8);   //set duty
write_c(0x3F);   //duty 63
write_c(0xA0);   //Set Segment Re-map
write_c(0xd3);   //display offset
write_c(0x00);   //set 00
write_c(0x40);   //Start line
write_c(0xC8);   //Set COM Output Scan Direction
write_c(0xda);   //Set COM pins hardware configuration
write_c(0x12);   //Set COM pins hardware configuration
write_c(0xD9);   //Set precharge
write_c(0xf1);   //precharge=fh , discharge=1h
write_c(0xDB);   //Set VcomH
write_c(0x49);   //VcomH=73
write_c(0xA4);   //Normal Mode
write_c(0xA6);   //No Inverse
write_c(0xAF);   //display on
}
void write_c(unsigned char ins_c)
{
DC=0;
CS=0;
RD=1;           /*tell system only write*/
WR=0;
d_bus=ins_c;
WR=1;
CS=1;
DC=1;
}

```

Product No.	DD-2832BE-1A	REV. A

Page	10 / 11
------	---------

```

void write_d(unsigned char ins_d)
{
DC=1;
CS=0;
RD=1;           /*tell system only write*/
WR=0;
d_bus=ins_d;
CS=1;
WR=1;
DC=1;
}
void delay(int count)
{
int i,j;
for(i=0;i<=count;i++)
for(j=0;j<=1000;j++)
;
}
* write_c= Write Command , write_d= Write Data

```

Product No.	DD-2832BE-1A	REV. A

Page	11 / 11
------	---------