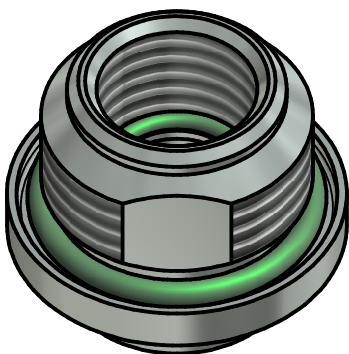
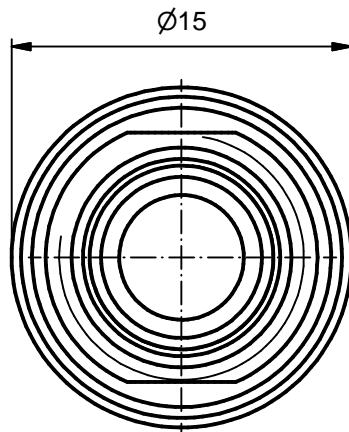
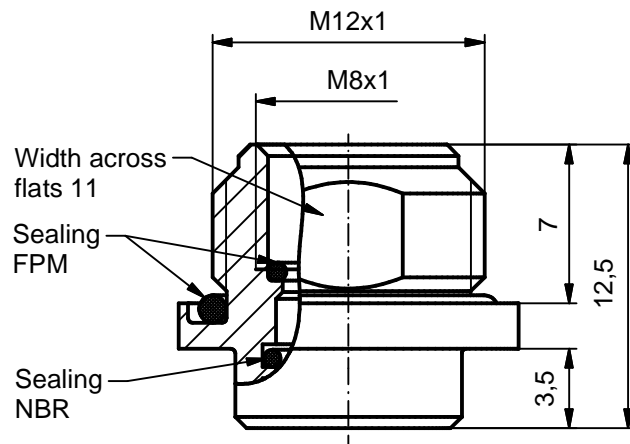




Materials:

Socket housing: CuZn
Housing surface: nickel plated
Sealing: FPM, NBR

Installation specification:

Recommended torque: 1-1,2 Nm
Installation hole: See fig.1 42K1A1119



DO NOT ALTER CAD DRAWING BY HAND	RoHS & REACH compliant	Index: a 25.04.16 rbo Ä6018 Intallation tool deleted		 dim. in mm		title: Housing female M12x1 H10, back panel mounting	
			date	name			
			drawn	17.08.15	Gitinow	dwg no: 42K1A1081	
			appd.	17.08.15	Schramm		
		general tolerance:				part no: 42-01484	
		0 ± 0,50mm 0,0 ± 0,25mm 0,00 ± 0,10mm + ± 5°					
THIS DRAWING MAY NOT BE COPIED OR REPRODUCED IN ANY WAY, AND MAY NOT BE PASSED ON TO A THIRD PARTY WITHOUT WRITTEN PERMISSION. OWNFRSHIP AND COPYRIGHT OF CONEC GmbH							