



Relays & Contactors > Electromechanical Relays > Power Relay, 300A, Standard, Bistable, 2 Coils, Polarized



Relay & Contactor Type: **General Purpose Power Relay**

Coil Magnetic System: **Bistable, 2 Coils, Polarized**

Contact Arrangement: **1 Form X SPST-NO-DM**

Contact Current Rating: **300 A**

Coil Voltage Rating: **18 VDC, 32 VDC**

[All Power Relay, 300A, Standard, Bistable, 2 Coils, Polarized \(16\)](#)

Features

Contact Features

Contact Material	Silver Alloy
------------------	--------------

Dimensions

Product Width	60 mm[2.36 in]
Product Length	78 mm[3.07 in]
Product Height	90 mm[3.54 in]

Packaging Features

Packaging Method	Carton
------------------	--------

Other

Contact Current Class	300 A
EU RoHS Compliance	Compliant with Exemptions
EU ELV Compliance	Compliant with Exemptions

Mechanical Attachment

Product Mounting Feature Type	Flange with Mounting Holes
Product Mount Type	Panel Mount

Electrical Characteristics

--	--



Coil Resistance	7.8 – 8.4 Ω
Contact Current Rating	300 A
Coil Voltage Rating	18 VDC, 32 VDC
Contact Voltage Rating	24 VDC
Coil Power Rating DC	.067 W

Configuration Features

Coil Special Features	Coil Suppression Diode
Contact Number of Poles	1
Contact Arrangement	1 Form X SPST-NO-DM

Product Type Features

Relay & Contactor Type	General Purpose Power Relay
------------------------	-----------------------------

Operation/Application

Coil Magnetic System	Bistable, 2 Coils, Polarized
----------------------	------------------------------

Product Compliance

For compliance documentation, visit the product page on TE.com>

EU RoHS Directive 2011/65/EU	Compliant with Exemptions
EU ELV Directive 2000/53/EC	Compliant with Exemptions
China RoHS 2 Directive MIIT Order No 32, 2016	Restricted Materials Above Threshold
EU REACH Regulation (EC) No. 1907/2006	Current ECHA Candidate List: JUNE 2024 (241) Candidate List Declared Against: JAN 2022 (223) SVHC > Threshold: Pb (4% in Component part) Article Safe Usage Statements: Do not eat, drink or smoke when using this product. Wash thoroughly after handling. Recycle if possible and dispose of the article by following all applicable governmental regulations relevant to your geographic location.
Halogen Content	Not Yet Reviewed for halogen content
Solder Process Capability	Not reviewed for solder process capability

Product Compliance Disclaimer

This information is provided based on reasonable inquiry of our suppliers and represents our current actual knowledge based on the information they provided. This information is subject to change. The part numbers that TE has identified as EU RoHS compliant have a maximum concentration of 0.1% by weight in homogenous materials for lead, hexavalent chromium, mercury, PBB, PBDE, DBP, BBP, DEHP, DIBP, and 0.01% for cadmium, or qualify for an exemption to these limits as defined in the Annexes of Directive 2011/65/EU (RoHS2). Finished electrical and electronic equipment products will be CE marked as required by Directive 2011/65/EU. Components may not be CE marked. Additionally, the part numbers that TE has identified as EU ELV compliant have a maximum concentration of 0.1% by weight in homogenous materials for lead, hexavalent chromium, and mercury, and 0.01% for cadmium, or qualify for an exemption to these limits as defined in the Annexes of Directive 2000/53/EC (ELV). Regarding the REACH Regulation, the information TE provides

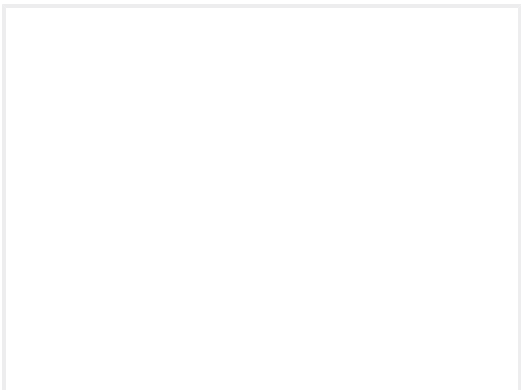


on SVHC in articles for this part number is based on the latest European Chemicals Agency (ECHA) ‘Guidance on requirements for substances in articles’ posted at this URL: <https://echa.europa.eu/guidance-documents/guidance-on-reach>

Compatible Parts



TE Part # K1153839
[Relay \(HVR\) 60-311-12](#)



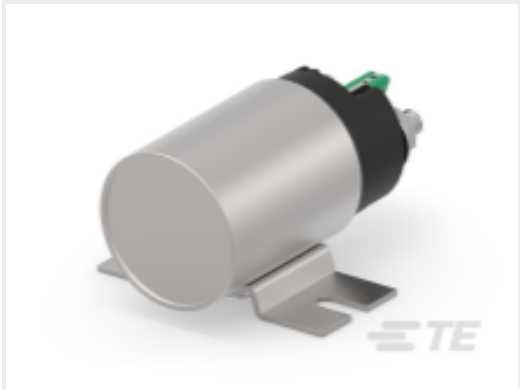
TE Part # K1143832
[Relay 29-511-12-906](#)



TE Part # CAT-AL6-KSPR30300
[Power Relay, 300A, Standard, Bistable, 2 Coils, Polarized](#)

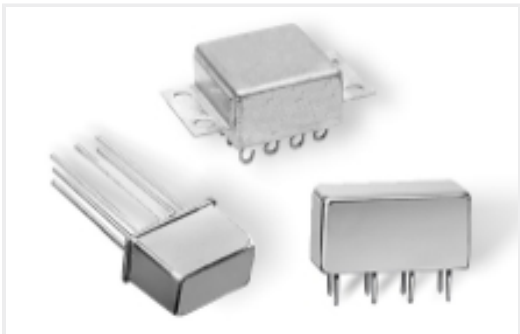


TE Part # CAT-AL6-KSPR29300
[Power Relay, 300A, Standard, Monostable, DC](#)



TE Part # K1023465
[Relay 29-314-12-903](#)

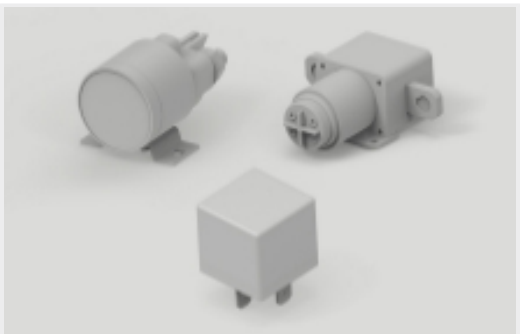
Also in the Series | **KISSLING Series 30**



[DC Relays\(3\)](#)



[Electromechanical Relays\(37\)](#)



[Intelligent Relays\(7\)](#)

Customers Also Bought



TE Part #CAT-AL4-SBD355002
[Battery Disconnecter, 500A, 2 Pole](#)



TE Part #TCD14745101-001
[M12D4-MS-RJ-PUR-22SH-TYPE C GREEN-0.5M](#)



TE Part #K1121763
[Relay 29-111-02A](#)



TE Part #K1131030
[Relay 29-011-02-929](#)



Documents

Product Drawings

Relay 30-313-12

English

CAD Files

3D PDF

3D

Customer View Model

ENG_CVM_CVM_30-313-12_A.2d_dxf.zip

English

Customer View Model

ENG_CVM_CVM_30-313-12_A.3d_igs.zip

English

Customer View Model

ENG_CVM_CVM_30-313-12_A.3d_stp.zip

English

By downloading the CAD file I accept and agree to the [Terms and Conditions](#) of use.

Datasheets & Catalog Pages

KISSLING SINGLE POLE BI-STABLE RELAYS Series 30 / 300A

English