



Pushing Performance  
Since 1945

# Han C module, crimp female

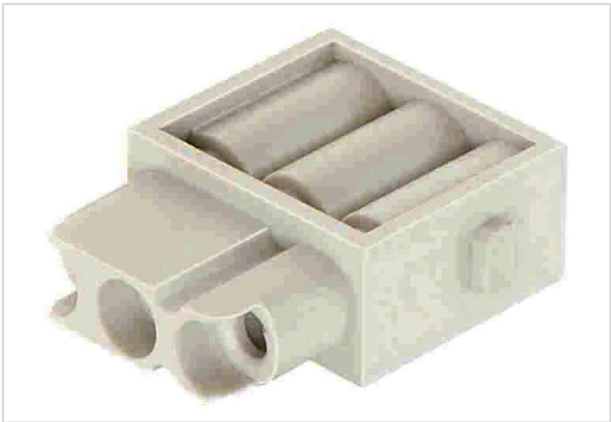


Image is for illustration purposes only. Please refer to product description.

Part number	09 14 003 3102
Specification	Han C module, crimp female
HARTING eCatalogue	<a href="https://b2b.harting.com/09140033102">https://b2b.harting.com/09140033102</a>

## Identification

Category	Modules
Series	Han-Modular®
Type of module	Han® C module
Size of the module	Single module

## Version

Termination method	Crimp termination
Gender	Female
Number of contacts	3
Details	Please order crimp contacts separately.

## Technical characteristics

Conductor cross-section	1.5 ... 6 mm²
Wire outer diameter	≤4.8 mm 4.8 ... 7.8 mm Stripping length 12 mm
Rated current	40 A
Rated voltage	690 V
Rated impulse voltage	8 kV
Pollution degree	3
Rated current acc. to UL	40 A
Rated voltage acc. to UL	600 V
Insulation resistance	>10 <sup>10</sup> Ω



Pushing Performance  
Since 1945

## Technical characteristics

Stripping length	9.5 mm
	12 mm Wire outer diameter > 4.8 mm
Limiting temperature	-40 ... +125 °C
Mating cycles	≥10,000
Note on the mating cycles	Mating cycles with other HMC components

## Material properties

Material (insert)	Polycarbonate (PC)
Colour (insert)	RAL 7032 (pebble grey)
Material flammability class acc. to UL 94	V-0
RoHS	compliant
ELV status	compliant
China RoHS	e
REACH Annex XVII substances	Not contained
REACH ANNEX XIV substances	Not contained
REACH SVHC substances	Not contained
California Proposition 65 substances	Not contained
Fire protection on railway vehicles	EN 45545-2 (2020-08)
Requirement set with Hazard Levels	R22 (HL 1-3)
	R23 (HL 1-3)

## Specifications and approvals

Specifications	IEC 60664-1
	IEC 61984
UL / CSA	UL 1977 ECBT2.E235076
Approvals	DNV GL

## Commercial data

Packaging size	2
Net weight	6.74 g
Country of origin	Germany
European customs tariff number	85389099
GTIN	5713140020092
ETIM	EC000438



**Pushing Performance**  
Since 1945

## Commercial data

eCl@ss

27440217 Module for industrial connectors (power/signals)