



Heat Shrink Tubing > RAYRIM Heat Shrink Tubing



Tubing Product Type: **Heat Shrink Edging Protection**

Primary Product Color: **Black**

Recovered Inside Diameter (Max): **1 mm [.039 in]**

Primary Product Material: **Irradiated Modified Polyolefin**

Expanded Inside Diameter (Min): **1.6 mm [.063 in]**

[All RAYRIM Heat Shrink Tubing \(8\)](#)

Features

Product Type Features

Tubing Product Type	Heat Shrink Edging Protection
---------------------	-------------------------------

Body Features

Primary Product Color	Black
Primary Product Material	Irradiated Modified Polyolefin
Flexibility	Flexible

Dimensions

Product Length	1220 mm[48.031 in]
Recovered Inside Diameter (Max)	1 mm[.039 in]
Expanded Inside Diameter (Min)	1.6 mm[.063 in]
Tubing Size Range	1 – 1.6 mm[.039 – .063 in]

Usage Conditions

Shrink Temperature (Min)	120 °C
Tubing Flammability Type	Flame-Retardant
Operating Temperature Range	-55 – 80 °C
Recovery Temperature	150 °C

Operation/Application



Mechanical Resistance	Abrasion, Mechanical Damage
-----------------------	-----------------------------

Product Availability

Applicable Region	Global
-------------------	--------

Packaging Features

Packaging Method	Bag & Box
------------------	-----------

Other

Meets Low Outgassing Requirements	No
Product Source	Czech Republic

Product Compliance

For compliance documentation, visit the product page on TE.com>

EU RoHS Directive 2011/65/EU	Compliant
EU ELV Directive 2000/53/EC	Compliant
China RoHS 2 Directive MIIT Order No 32, 2016	No Restricted Materials Above Threshold
EU REACH Regulation (EC) No. 1907/2006	Current ECHA Candidate List: JUNE 2024 (241) Candidate List Declared Against: JAN 2024 (240) Does not contain REACH SVHC
Halogen Content	Not Low Halogen - contains Br or Cl > 900 ppm.
Solder Process Capability	Not applicable for solder process capability

Product Compliance Disclaimer

This information is provided based on reasonable inquiry of our suppliers and represents our current actual knowledge based on the information they provided. This information is subject to change. The part numbers that TE has identified as EU RoHS compliant have a maximum concentration of 0.1% by weight in homogenous materials for lead, hexavalent chromium, mercury, PBB, PBDE, DBP, BBP, DEHP, DIBP, and 0.01% for cadmium, or qualify for an exemption to these limits as defined in the Annexes of Directive 2011/65/EU (RoHS2). Finished electrical and electronic equipment products will be CE marked as required by Directive 2011/65/EU. Components may not be CE marked. Additionally, the part numbers that TE has identified as EU ELV compliant have a maximum concentration of 0.1% by weight in homogenous materials for lead, hexavalent chromium, and mercury, and 0.01% for cadmium, or qualify for an exemption to these limits as defined in the Annexes of Directive 2000/53/EC (ELV). Regarding the REACH Regulation, the information TE provides on SVHC in articles for this part number is based on the latest European Chemicals Agency (ECHA) ‘Guidance on requirements for substances in articles’ posted at this URL: <https://echa.europa.eu/guidance-documents/guidance-on-reach>

Compatible Parts

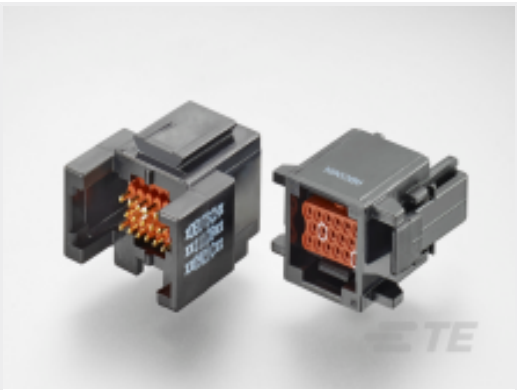
RAYRIM-NR7-0-STK

Heat Shrink Edging Protection, Black, Shrinks To 1 mm [.039 in], Irradiated Modified Polyolefin, 1.6 mm [.063 in] Expanded Inside, Flame-Retardant

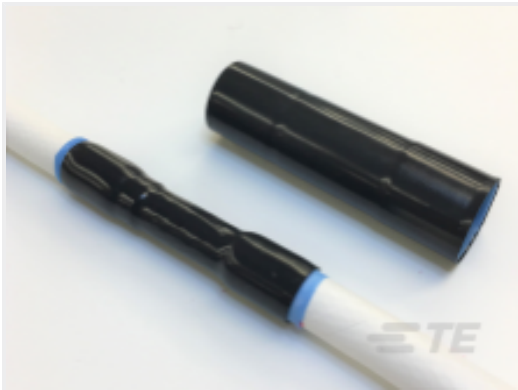


TE Part # EG1114-000  
[CV1981-ST-230V1600W-EU](#)

Customers Also Bought



TE Part #ABC06N-20P  
[IN-LINE PLUG](#)



TE Part #EG7673-000  
[RT-555-3/4-3.00/A287-0](#)



TE Part #1879208-9  
[CPF 0402 22R 0.1% 25PPM 1K RL](#)



TE Part #277150-3  
[TERMINAL,COPALUM R 2 3/8](#)



TE Part #2-2176337-2  
[CRGCQ 0402 560R 1%](#)



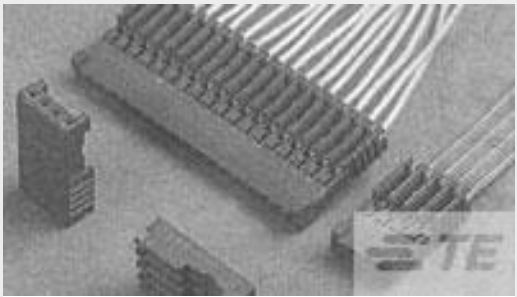
TE Part #1624094-6  
[3613C 1.0UH 10%](#)



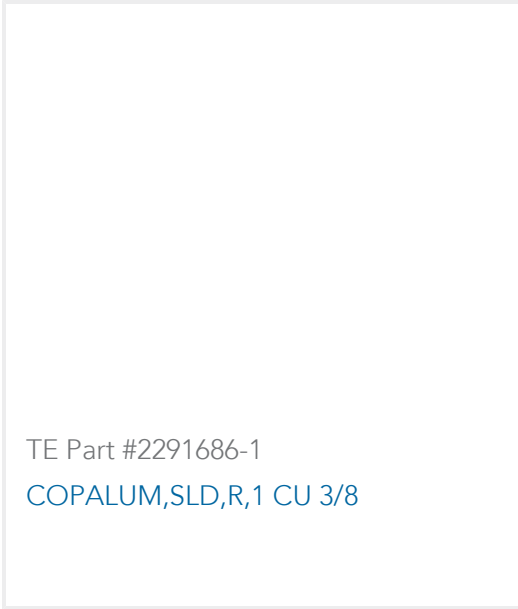
TE Part #2205061-2  
[CA MICRO-MATCH MOW-MOW 6POS](#)



TE Part #4-1879208-2  
[CPF 0402 510R 0.1% 25PPM 1K RL](#)



TE Part #281786-6  
[PLUG HE14 IDC 180 6 P AWG 28-26](#)



TE Part #2291686-1  
[COPALUM,SLD,R,1 CU 3/8](#)

Documents

Product Drawings

[RAYRIM-NR7-0-STK](#)

English

Datasheets & Catalog Pages

[Measuring\\_Single\\_Wall\\_Tubing](#)

English

[RAYRIM Pages from 9-1773447-9](#)

English



Selecting\_Correct\_Tubing\_1216

English

Product Specifications

Application Specification

English