



**Part Number :** [1731070560](#)

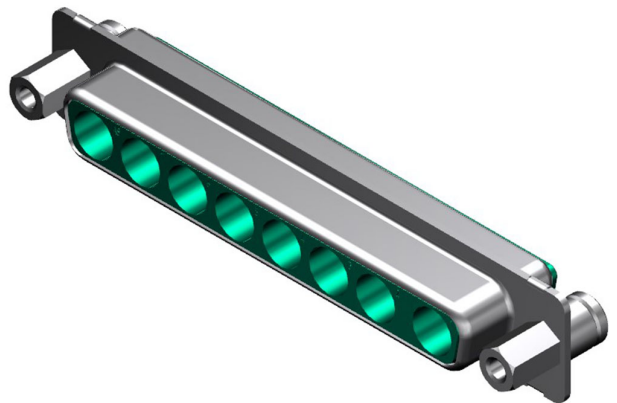
**Product Description :** FCT Mixed Layout D-Sub Housing, Female, Tin-plated Shell, 6.40mm #4-40 Front Threaded Spacer, 5.50mm #4-40 Rear Threaded Spacer, 8 Circuits Unloaded, Green Insulator

**Series Number :** 173107

**Status :** Active

**Product Category :** D-Sub Connectors

**Engineering Number :** FM8W8S-1426



---

## Documents & Resources


### Drawings

[1731070560\\_sd.pdf](#)

---

## Product Environment Compliance

### Compliance

GADSL/IMDS	Not Relevant
China RoHS	
EU ELV	Not Relevant
Low-Halogen Status	Not Reviewed per IEC 61249-2-21
REACH SVHC	Contains Lead per D(2022)4187-DC (10 June 2022)
EU RoHS	Compliant with Exemption 6(c) per EU 2015/863

### Multiple Part Product Compliance Statements

- Eu RoHS
- REACH SVHC
- Low-Halogen

### Multiple Part Industry Compliance Documents

- IPC 1752A Class C
- IPC 1752A Class D
- Molex Product Compliance Declaration
- IEC-62474

## Part Details

### General

Status	Active
Category	D-Sub Connectors
Series	173107
Description	FCT Mixed Layout D-Sub Housing, Female, Tin-plated Shell, 6.40mm #4-40 Front Threaded Spacer, 5.50mm #4-40 Rear Threaded Spacer, 8 Circuits Unloaded, Green Insulator
Magnetic	Yes
Product Name	FCT Products
Type	Mixed Layout
UPC	191128466660

### Electrical

Shielded	Yes
----------	-----

### Physical

Circuits (Loaded)	0
Circuits (maximum)	8
Color - Resin	Green
Gender	Female
Material - Resin	PBT
Material - Shell	Steel
Net Weight	14.000/g
Number of Rows	1
Packaging Type	Carton
Panel Mount	Rear
Panel Mount Method	Thread-In
PCB Thickness - Recommended	1.60mm
Pitch - Mating Interface	2.84mm
Pitch - Termination Interface	2.54mm

Plating - Shell	Tin
Polarized to Mating Part	Yes
Polarized to PCB	No
Ports	1
Temperature Range - Operating	-55° to +130°C
Waterproof / Dustproof	No

---

## Mates With / Use With

### Mates with Part(s)

Description	Part Number
Mates With	FCT Mixed Layout D-Sub, Size 4, 8W8, Plug

### Use with Part(s)

Description	Part Number
Use With	FCT Coaxial, High Power, High Voltage, or Pneumatic Contacts