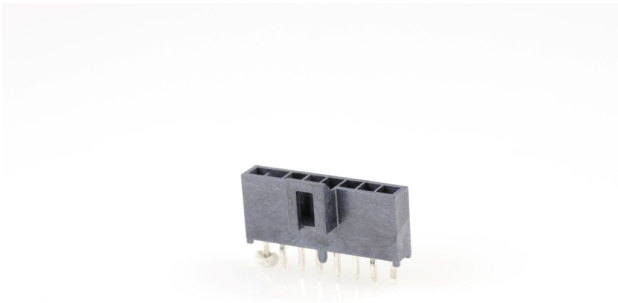




Part Number : [1053091108](#)
Product Description : Nano-Fit Vertical Header, Through Hole, 2.50mm Pitch, Single Row, 8 Circuits, with Kinked Pins, Tin (Sn) Plating, Black, Glow-Wire Capable, Tray
Series Number : 105309
Status : Active
Product Category : PCB Headers and Receptacles
Packaging Alternative : 1053093508 (Embossed Tape on Reel)



Documents & Resources

Drawings

[1053091108_sd.pdf](#)
[PK-105309-300-000.pdf](#)

3D Models and Design Files


[1053091108_stp.zip](#)
[SYM-105309-XX08-001.zip](#)

Specifications

[AS-105300-100-001.pdf](#)
[1053001000-PS-CH-000.pdf](#)
[1053001000-PS-ES-000.pdf](#)
[1053001000-PS-JP-000.pdf](#)
[1053001000-PS-SK-000.pdf](#)
[PS-105300-100-001.pdf](#)
[1053001000-TS-000.pdf](#)

Product Environment Compliance

Compliance

GADSL/IMDS	Compliant with Exemption 44; 33
China RoHS	
EU ELV	Not Relevant
Low-Halogen Status	Low-Halogen per IEC 61249-2-21
REACH SVHC	Not Contained per D(2024)6225-DC (07 Nov 2024)

EU RoHS	Compliant per EU 2015/863
---------	---------------------------

Multiple Part Product Compliance Statements

- Eu RoHS
- REACH SVHC
- Low-Halogen

Multiple Part Industry Compliance Documents

- IPC 1752A Class C
- IPC 1752A Class D
- Molex Product Compliance Declaration
- IEC-62474
- chemSHERPA (xml)

EU RoHS Certificate of Compliance

Part Details

General

Status	Active
Category	PCB Headers and Receptacles
Series	105309
Description	Nano-Fit Vertical Header, Through Hole, 2.50mm Pitch, Single Row, 8 Circuits, with Kinked Pins, Tin (Sn) Plating, Black, Glow-Wire Capable, Tray
Application	Power, Wire-to-Board
Component Type	PCB Header
Product Name	Nano-Fit
UPC	887191937526

Agency

CSA	LR19980
UL	E29179

Electrical

Current - Maximum per Contact	8.0A
Voltage - Maximum	250V AC (RMS)/DC

Physical

Breakaway	No
Circuits (Loaded)	8
Circuits (maximum)	8
Color - Resin	Black
Durability (mating cycles max)	25
Flammability	94V-0
Glow-Wire Capable	Yes
Guide to Mating Part	No
Keying to Mating Part	Yes
Lock to Mating Part	Yes
Material - Metal	Brass
Material - Plating Mating	Tin
Material - Plating Termination	Tin
Material - Resin	Liquid Crystal Polymer
Net Weight	0.870/g
Number of Rows	1
Orientation	Vertical
Packaging Type	Tray
PC Tail Length	3.20mm
PCB Locator	Yes
PCB Retention	Yes
PCB Thickness - Recommended	1.60mm, 2.40mm
Pitch - Mating Interface	2.50mm
Pitch - Termination Interface	2.50mm
Plating min - Mating	1.524µm
Plating min - Termination	1.524µm
Polarized to Mating Part	Yes
Polarized to PCB	Yes
Shrouded	Yes
Stackable	No
Temperature Range - Operating	-40° to +125°C
Termination Interface Style	Through Hole

Mates With / Use With

Mates with Part(s)

Description	Part Number
Nano-Fit Receptacle Housing, TPA Capable, 2.50mm Pitch, Single Row, 8 Circuits, Black, Glow-Wire Capable	<u>1053071208</u>
Nano-Fit-to-Nano-Fit Single Row Off-the-Shelf (OTS) Cable Assemblies	<u>145130</u>

This document was generated on Feb 28, 2025