



Connectors > Automotive Connectors > Automotive Housings > Timer Connector Housing



Number of Positions: 26

Connector & Housing Type: Housing for Female Terminals

Mating Tab Width: 1.6 mm, 2.8 mm [.063 in, .11 in]

Connector System: Wire-to-Wire

Centerline (Pitch): 4 mm [.16 in]

[All Timer Connector Housing \(449\)](#)

Features

Product Type Features

Mixed & Hybrid Connector	Yes
Connector Shape	Rectangular
Connector & Housing Type	Housing for Female Terminals
Connector System	Wire-to-Wire
Sealable	Yes
Primary Locking Feature	Integrated in Housing
Connector & Contact Terminates To	Wire & Cable

Configuration Features

Number of Positions	26
Number of Rows	5

Body Features

Cable Exit Angle	180°
Primary Product Color	Black



Connector & Keying Code	A
-------------------------	---

Contact Features

Contact Size	1.6mm, 2.8mm
Contact Type	Receptacle
Mating Tab Width	1.6 mm, 2.8 mm [.063 in] [.11 in]

Mechanical Attachment

Strain Relief	Without
Terminal Position Assurance	No
Mating Alignment Type	Keyed
Mating Alignment	With
Connector Mounting Type	Cable Mount (Free-Hanging)

Housing Features

Housing Material	PBT GF
Centerline (Pitch)	4 mm [.16 in]

Dimensions

Row-to-Row Spacing	4 mm, 7.3 mm [.16 in] [.29 in]
Product Width	43.1 mm [1.69 in]
Product Length	48.2 mm [1.89 in]
Connector Height	46.7 mm [1.83 in]

Packaging Features

Packaging Quantity	90
Packaging Method	Box

Other

Serviceable	No
Connector Position Assurance Capable	No

Product Compliance

[For compliance documentation, visit the product page on TE.com>](#)

EU RoHS Directive 2011/65/EU	Compliant
EU ELV Directive 2000/53/EC	Compliant
China RoHS 2 Directive MIIT Order No 32, 2016	No Restricted Materials Above Threshold
EU REACH Regulation (EC) No. 1907/2006	



Current ECHA Candidate List: JUNE 2024 (241)
Candidate List Declared Against: JUNE 2024 (241)
Does not contain REACH SVHC

Halogen Content	Low Halogen - Br, Cl, F, I < 900 ppm per homogenous material. Also BFR/CFR/PVC Free
Solder Process Capability	Not applicable for solder process capability

Product Compliance Disclaimer

This information is provided based on reasonable inquiry of our suppliers and represents our current actual knowledge based on the information they provided. This information is subject to change. The part numbers that TE has identified as EU RoHS compliant have a maximum concentration of 0.1% by weight in homogenous materials for lead, hexavalent chromium, mercury, PBB, PBDE, DBP, BBP, DEHP, DIBP, and 0.01% for cadmium, or qualify for an exemption to these limits as defined in the Annexes of Directive 2011/65/EU (RoHS2). Finished electrical and electronic equipment products will be CE marked as required by Directive 2011/65/EU. Components may not be CE marked. Additionally, the part numbers that TE has identified as EU ELV compliant have a maximum concentration of 0.1% by weight in homogenous materials for lead, hexavalent chromium, and mercury, and 0.01% for cadmium, or qualify for an exemption to these limits as defined in the Annexes of Directive 2000/53/EC (ELV). Regarding the REACH Regulation, the information TE provides on SVHC in articles for this part number is based on the latest European Chemicals Agency (ECHA) ‘Guidance on requirements for substances in articles’ posted at this URL: <https://echa.europa.eu/guidance-documents/guidance-on-reach>

Compatible Parts

 <p>TE Part # 1743968-1 INNER SEAL FOR HYB 26P PLUG</p>	 <p>TE Part # 1897013-2 MT-2/JPT SLD 26P CAP HSG</p>	 <p>TE Part # 964972-1 EINZELLEITERDICHTNG</p>	 <p>TE Part # 963531-1 BLINDSTOPFEN</p>
 <p>TE Part # 828905-1 SINGLE-WIRE-SEAL(5MM HOLE)</p>	 <p>TE Part # 1897014-2 MT-2/JPT SLD 26P PLUG COVER</p>	 <p>TE Part # 964971-1 EINZELLEITERDICHTNG</p>	 <p>TE Part # 828904-2 SINGLE WIRE SEAL FOR J.P.T.CON</p>



TE Part # CAT-T4827-T273
TIMER, RECEPTACLE AND TAB




TE Part # 828922-1
2,5MM CAVITY PLUG FOR 5,4MM DI



TE Part # 963530-1
EINZELLEITERDICHTNG


Also in the Series | Junior Power Timer




Automotive Connector Caps & Covers
(1)




Automotive Connector Locks &
Position Assurance(1)



Automotive Housings(36)



Automotive Terminals(34)



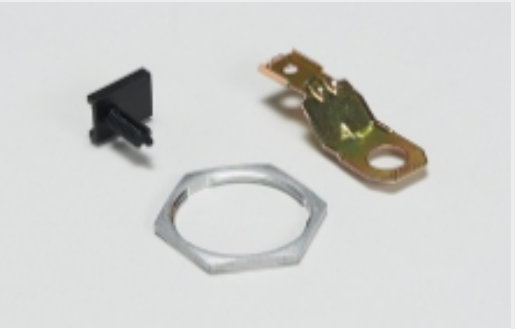
Busbars & Terminals(1)




Connector Seals & Cavity Plugs(1)



Module Components(1)



Other Automotive Connector
Accessories(2)

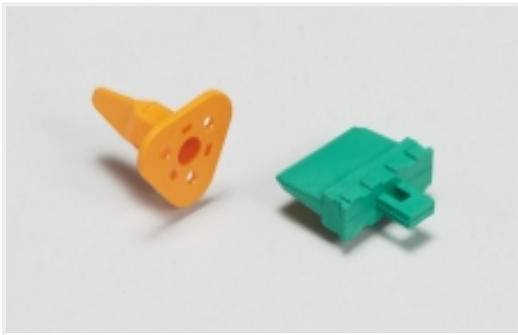


Special Purpose Terminals(2)

Also in the Series | Micro Timer II



Automotive Connector Caps & Covers
(1)



Automotive Connector Locks &
Position Assurance(1)



Automotive Housings(36)



Automotive Terminals(34)



Connector Seals & Cavity Plugs(1)



Insertion & Extraction Tools(4)

Customers Also Bought



TE Part #2324321-1
025 REC CONTACT



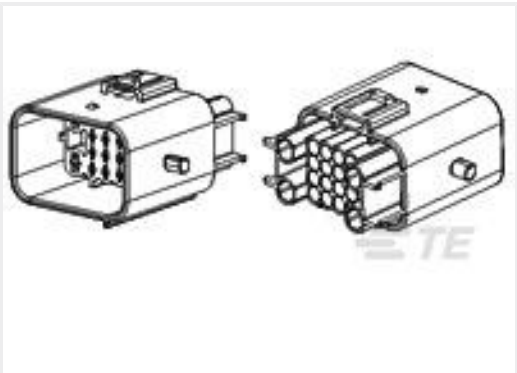
TE Part #2109006-1
060 REC(SS) CONT



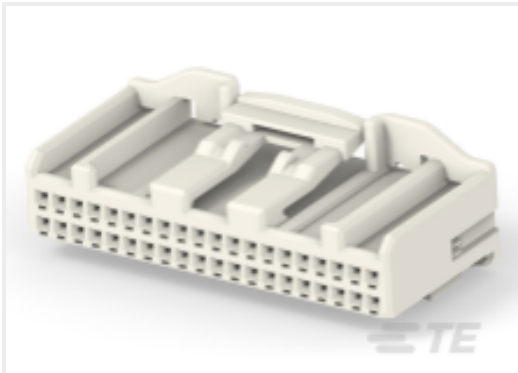
TE Part #1743064-2
MT-2/JPT SLD 36P PLUG COVER BK



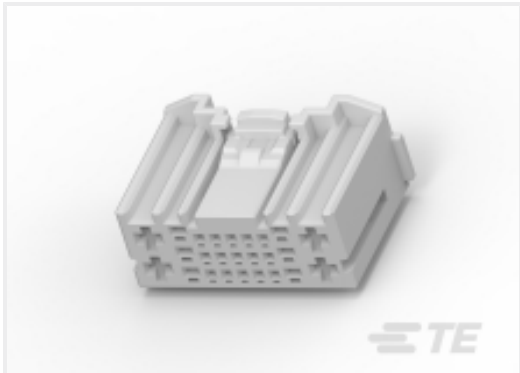
TE Part #2005434-1
025/090 HYB 34P CAP ASSY



TE Part #936780-2
MT-II/JPT SLD 20P CAP HSG



TE Part #2325415-1
40POS,ML .025,REC HSG ASSY,UNSLD



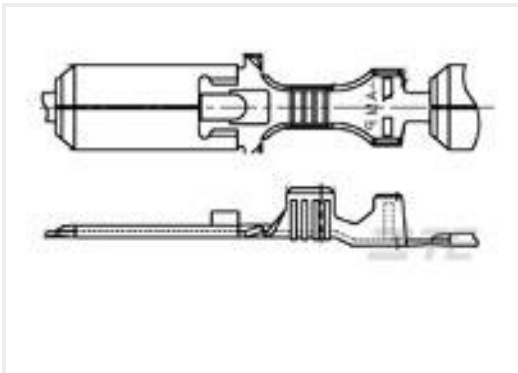
TE Part #2109520-1
025/060/110 HYB 25P PLUG ASSY



TE Part #1897014-2
MT-2/JPT SLD 26P PLUG COVER



TE Part #2-2355506-1
2POS,MCON 1.2,REC HSG ASSY,SLD,
COD B



TE Part #368079-1
E-S MK-2(+) 250 TAB (1.5-3.0)

Documents



CAD Files

3D PDF

3D

Customer View Model

ENG_CVM_CVM_1897009-2_D.2d_dxf.zip

English

Customer View Model

ENG_CVM_CVM_1897009-2_D.3d_igs.zip

English

Customer View Model

ENG_CVM_CVM_1897009-2_D.3d_stp.zip

English

By downloading the CAD file I accept and agree to the [Terms and Conditions](#) of use.

Product Specifications

Product Specification

English

Instruction Sheets

Instruction Sheet (U.S.)

English