



TE Internal #: 4-2337939-8
Board-to-Board, 164 Position, 1 mm [.039 in] Centerline, Vertical,
Black, Signal, -40 – 85 °C [-40 – 185 °F], PCI & PCI Express
Connectors
[View on TE.com >](#)

Connectors > PCB Connectors > Card Edge Connectors > PCI & PCI Express Connectors



Connector System: **Board-to-Board**
Number of Positions: **164**
PCI Generation: **4**
Centerline (Pitch): **1 mm [.039 in]**
Contact Mating Area Plating Material Thickness: **[15 µin]**

Features

Product Type Features

Connector & Contact Terminates To	Printed Circuit Board
Connector System	Board-to-Board
Sealable	No

Configuration Features

Number of Positions	164
PCB Mount Orientation	Vertical
Ejector	Without

Body Features

Primary Product Color	Black
-----------------------	-------

Contact Features

Contact Current Rating (Max)	1.1 A
Contact Underplating Material	Nickel
Contact Mating Area Plating Material	Gold (Au)
Contact Base Material	Copper Alloy
PCB Contact Termination Area Plating Material	Tin
	15 µin

Mechanical Attachment

Connector Mounting Type	Board Mount
-------------------------	-------------



Housing Features

Centerline (Pitch)	1 mm[.039 in]
--------------------	---------------

Dimensions

PCB Thickness (Accepted)	1.57 mm
--------------------------	---------

Usage Conditions

Operating Temperature Range	-40 – 85 °C[-40 – 185 °F]
-----------------------------	---------------------------

Operation/Application

Circuit Application	Signal
---------------------	--------

Industry Standards

Bus Type	PCI Express
PCI Generation	4

Packaging Features

Packaging Method	Box & Tray
------------------	------------

Product Compliance

For compliance documentation, visit the product page on TE.com>

EU RoHS Directive 2011/65/EU	Compliant
EU ELV Directive 2000/53/EC	Compliant
China RoHS 2 Directive MIIT Order No 32, 2016	No Restricted Materials Above Threshold
EU REACH Regulation (EC) No. 1907/2006	Current ECHA Candidate List: JUNE 2024 (241) Candidate List Declared Against: JUNE 2024 (241) Does not contain REACH SVHC
Halogen Content	Low Halogen - Br, Cl, F, I < 900 ppm per homogenous material. Also BFR/CFR/PVC Free
Solder Process Capability	Reflow solder capable to 260°C

Product Compliance Disclaimer

This information is provided based on reasonable inquiry of our suppliers and represents our current actual knowledge based on the information they provided. This information is subject to change. The part numbers that TE has identified as EU RoHS compliant have a maximum concentration of 0.1% by weight in homogenous materials for lead, hexavalent chromium, mercury, PBB, PBDE, DBP, BBP, DEHP, DIBP, and 0.01% for cadmium, or qualify for an exemption to these limits as defined in the Annexes of Directive 2011/65/EU (RoHS2). Finished electrical and electronic equipment products will be CE marked as required by Directive 2011/65/EU. Components may not be CE marked. Additionally, the part numbers that TE has identified as EU ELV compliant have a maximum concentration of 0.1% by weight in homogenous materials for lead, hexavalent chromium, and mercury, and 0.01% for cadmium, or qualify for an exemption to these limits as defined in the Annexes of Directive 2000/53/EC (ELV). Regarding the REACH Regulation, the information TE provides



on SVHC in articles for this part number is based on the latest European Chemicals Agency (ECHA) ‘Guidance on requirements for substances in articles’ posted at this URL: <https://echa.europa.eu/guidance-documents/guidance-on-reach>

Compatible Parts



TE Part # 1734774-1
PCI EXP 3.1L 36 POS WHT G/F

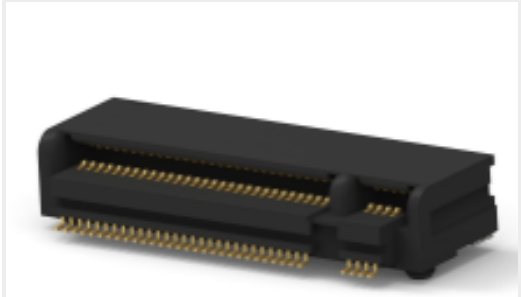


TE Part # 5-2337939-4
PCIE GEN4 CON,SMT,164POS,30u", MYLAR,HT

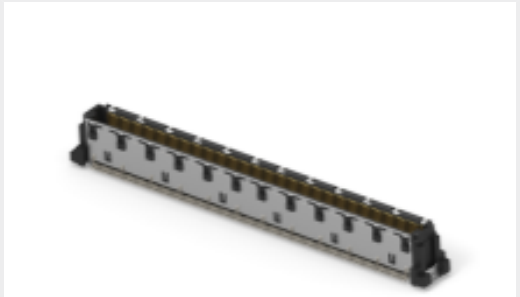
Customers Also Bought



TE Part #2-2327677-3
RECEPT ASSY, 140 POS, VERT, SLIVER 2.0



TE Part #CAT-M2-C76264
M.2 Connectors



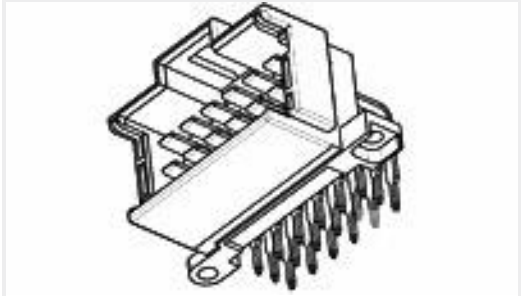
TE Part #2357798-3
16G,05FH,plug,220P 8H,T&R, W/ CAP



TE Part #1-1879213-6
CPF 0402 37R4 0.1% 25PPM 1K RL



TE Part #5-147279-5
20 MODII HDR DR SFMT B/A T&R LF



TE Part #9-966140-3
MESSERLEISTE 12P



TE Part #1551920-2
zQSFP+ connector assembly



TE Part #7-2199155-2
DDR4 DIMM 288 Pin SMT type

Documents

- CAD Files

3D PDF

3D

Customer View Model

ENG_CVM_CVM_4-2337939-8_A.2d_dxf.zip

English

Customer View Model

ENG_CVM_CVM_4-2337939-8_A.3d_igs.zip

English

Customer View Model

ENG_CVM_CVM_4-2337939-8_A.3d_stp.zip



English

By downloading the CAD file I accept and agree to the [Terms and Conditions](#) of use.

Product Specifications

AMP EI Series, Connector

Japanese

Product Specification

Japanese

Product Specification

English

Agency Approvals

UL Report

English