



Relays & Contactors > Electromechanical Relays



Relay & Contactor Type: **High Voltage Contactor**

Current Type: **DC**

Contact Arrangement: **1 Form X SPST-NO-DM**

Contact Current Rating: **500 A**

Coil Voltage Rating: **12 VDC**

Features

Product Type Features

Relay & Contactor Type	High Voltage Contactor
------------------------	------------------------

Configuration Features

Auxiliary Switch Contact Arrangement	None
Contact Number of Poles	1
Contact Arrangement	1 Form X SPST-NO-DM

Electrical Characteristics

Coil Resistance	11 Ω
Contact Switching Voltage (Max)	900 VDC
Contact Current Rating	500 A
Coil Voltage Rating	12 VDC

Body Features

Enclosure Type	Environmentally Sealed
----------------	------------------------

Termination Features

Main Termination & Connection Type	M8 x 1.25
Coil Termination & Connection Type	Connector

Mechanical Attachment

Torque (Main)	80 – 100 in-lbs
Product Mount Type	Chassis Mount



Dimensions

Coil Wire Length	390 mm[15.3 in]
Wire Size	22 AWG

Operation/Application

Current Type	DC
--------------	----

Packaging Features

Packaging Method	Individual
------------------	------------

Product Compliance

For compliance documentation, visit the product page on [TE.com](#)>

EU RoHS Directive 2011/65/EU	Compliant
EU ELV Directive 2000/53/EC	Compliant
China RoHS 2 Directive MIIT Order No 32, 2016	No Restricted Materials Above Threshold
EU REACH Regulation (EC) No. 1907/2006	Current ECHA Candidate List: JUNE 2024 (241) Candidate List Declared Against: JUNE 2024 (241) Does not contain REACH SVHC
Halogen Content	Low Halogen - Br, Cl, F, I < 900 ppm per homogenous material. Also BFR/CFR/PVC Free
Solder Process Capability	Not applicable for solder process capability

Product Compliance Disclaimer

This information is provided based on reasonable inquiry of our suppliers and represents our current actual knowledge based on the information they provided. This information is subject to change. The part numbers that TE has identified as EU RoHS compliant have a maximum concentration of 0.1% by weight in homogenous materials for lead, hexavalent chromium, mercury, PBB, PBDE, DBP, BBP, DEHP, DIBP, and 0.01% for cadmium, or qualify for an exemption to these limits as defined in the Annexes of Directive 2011/65/EU (RoHS2). Finished electrical and electronic equipment products will be CE marked as required by Directive 2011/65/EU. Components may not be CE marked. Additionally, the part numbers that TE has identified as EU ELV compliant have a maximum concentration of 0.1% by weight in homogenous materials for lead, hexavalent chromium, and mercury, and 0.01% for cadmium, or qualify for an exemption to these limits as defined in the Annexes of Directive 2000/53/EC (ELV). Regarding the REACH Regulation, the information TE provides on SVHC in articles for this part number is based on the latest European Chemicals Agency (ECHA) ‘Guidance on requirements for substances in articles’ posted at this URL: <https://echa.europa.eu/guidance-documents/guidance-on-reach>

Compatible Parts

LEV200A4ANA

High Voltage Contactor, DC, 1 Form X SPST-NO-DM, 500 A Contact Rating, 12 VDC
Coil Voltage, Chassis Mount, Environmentally Sealed, Kilovac LEV200

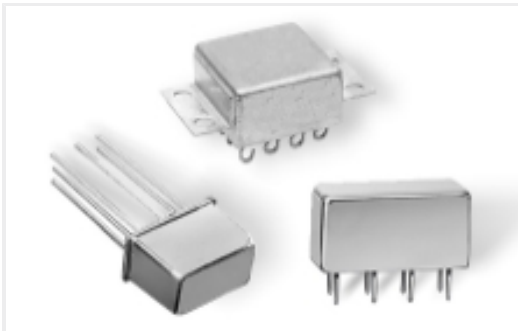


TE Part # 4-1618391-0
LEV100A4ANH=RELAY,SPST-NO,
12VDC

Also in the Series | Kilovac LEV200



DC Contactors(33)



DC Relays(33)



Electromechanical Relays(33)

Customers Also Bought



TE Part #1623519-1
CRG1206 1% 47R



TE Part #5-1618388-7
LEV200A6ANF=RELAY, SPST-NO



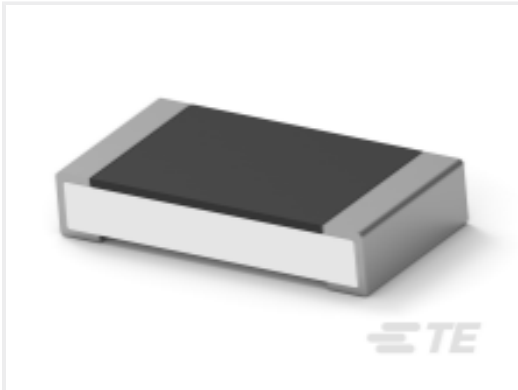
TE Part #8-1618404-1
LEV200AKNAF=RELAY, SPST-NO
72VDC



TE Part #L9000044-01
Antenna 2.4 FPC LV 7x45 100 MHF4



TE Part #1-2213767-7
AV19 SPM 3A MOVE RING LED BLUE
12V



TE Part #4-2176387-0
RQ 1206 340K 0.1% 10PPM 1K RL



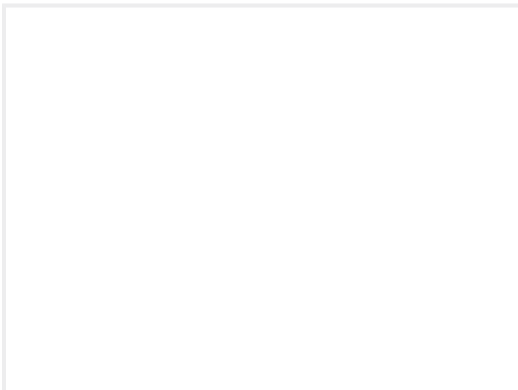
TE Part #DT16-18SA-K004
PLG, 18P, BLK, E, A



TE Part #3-2213767-7
AV19 SPL 3A MOVE RING LED BLUE
12V



TE Part #2-1393127-9
PRD-11AY0-24=PRD



TE Part #8-1608065-4
187-32T200=R3412



Documents

CAD Files

3D PDF

3D

Customer View Model

ENG_CVM_CVM_1618387-3_C.2d_dxf.zip

English

Customer View Model

ENG_CVM_CVM_1618387-3_C.3d_igs.zip

English

Customer View Model

ENG_CVM_CVM_1618387-3_C.3d_stp.zip

English

By downloading the CAD file I accept and agree to the [Terms and Conditions](#) of use.

Datasheets & Catalog Pages

5-1773450-5_sec7_LEV200

English