

Single Stage Power Line Filters Chassis Mount

multicompPRO

**RoHS
Compliant**



Quick Connect Terminal

Applications

- Electrical and electronic equipment
- Consumer goods
- Household equipment
- Medical equipment
- Electronic data processing equipment
- Office automation and datacom equipment




Features

- Single-stage filters are designed for easy and fast chassis mounting.
- These are single phase terminals
- High deferential mode performance
- UL Approval

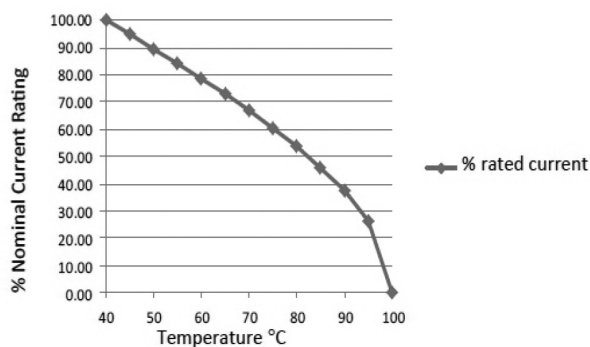
Specifications

Max. Continuous Operating Voltage	: 250V AC, 50/60Hz
Operating Frequency	: DC to 400Hz
Leakage Current @ 250V/50Hz	: 0.74mA
Rated Currents	: 6A to 20A @40°C
Temperature Range	: -25°C to +100°C (operation and storage)

Filter Selection Table

Part Number	Rated Current @40°C (25°C)	Inductance (L-L)	Capacitance (L-N)	Capacitance (L-G)	Resistance (L-N)	Connection Type			Weight (g)
	A	ΣL mH	ΣCx μF	ΣCy nF	ΣR KΩ				
MP007477	6(6.9)	1	0.3	9.4	1000	•	-	-	80

Temperature Derating Curve for EMC Filters Rated at 40°C Ambient and 100°C Max.



Single Stage Power Line Filters Chassis Mount

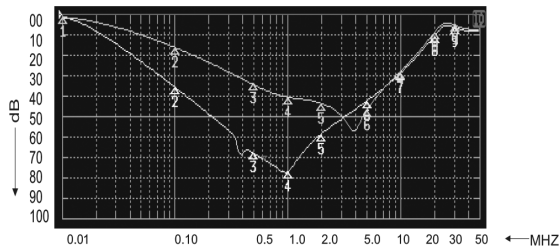
multicompPRO

Typical Insertion Loss, dB (50/50Ω)

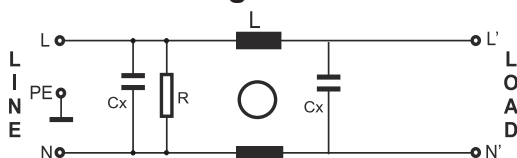
Common mode - 

Differential mode - 

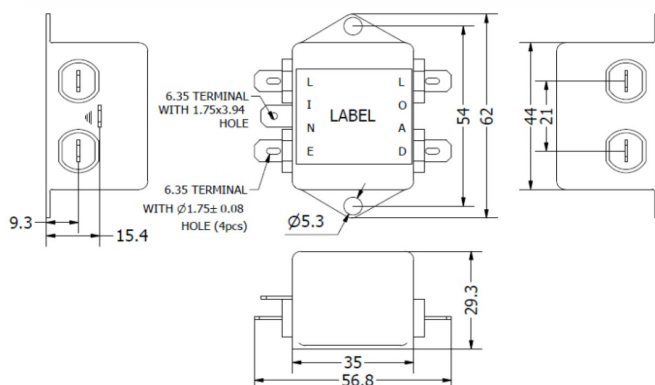
6 to 10 A



Schematic Diagram



Diagram



MP007477

Dimensions : Millimetres

Part Number Table

Description	Part Number
General Purpose, 250V AC, 6 A, Single Phase, 1 Stage, Quick Connect, Medical version	MP007477

Important Notice : This data sheet and its contents (the "Information") belong to the members of the AVNET group of companies (the "Group") or are licensed to it. No licence is granted for the use of it other than for information purposes in connection with the products to which it relates. No licence of any intellectual property rights is granted. The Information is subject to change without notice and replaces all data sheets previously supplied. The Information supplied is believed to be accurate but the Group assumes no responsibility for its accuracy or completeness, any error in or omission from it or for any use made of it. Users of this data sheet should check for themselves the Information and the suitability of the products for their purpose and not make any assumptions based on information included or omitted. Liability for loss or damage resulting from any reliance on the Information or use of it (including liability resulting from negligence or where the Group was aware of the possibility of such loss or damage arising) is excluded. This will not operate to limit or restrict the Group's liability for death or personal injury resulting from its negligence. Multicomp Pro is the registered trademark of Premier Farnell Limited 2019.

Newark.com/multicomp-pro
Farnell.com/multicomp-pro
sg.element14.com/b/multicomp-pro

multicompPRO