



Part Number : [1731070753](#)

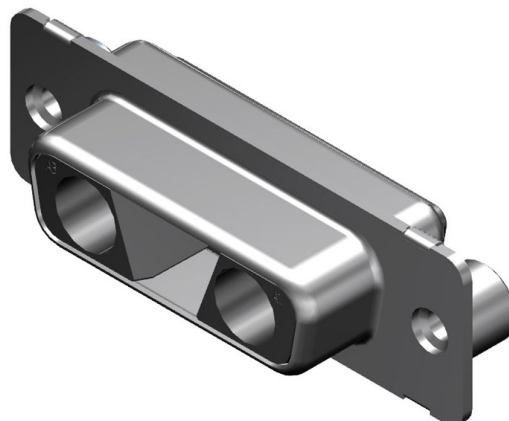
Product Description : FCT Mixed Layout D-Sub Housing, Female, Tin-plated Shell, Polarized, #4-40 Self-Locking Clinch Nut, 3 Circuits Unloaded, Black Insulator

Series Number : 173107

Status : Active

Product Category : D-Sub Connectors

Engineering Number : FTS3W3SC-K121




Documents & Resources

Drawings

[1731070753_sd.pdf](#)

Product Environment Compliance

Compliance

GADSL/IMDS	Not Relevant
China RoHS	
EU ELV	Not Relevant
Low-Halogen Status	Not Reviewed per IEC 61249-2-21
REACH SVHC	Contains Lead per D(2021)4569-DC (8 July 2021)
EU RoHS	Compliant with Exemption 6(a) per EU 2015/863

Multiple Part Product Compliance Statements

- Eu RoHS
- REACH SVHC
- Low-Halogen

Multiple Part Industry Compliance Documents

- IPC 1752A Class C
- IPC 1752A Class D
- Molex Product Compliance Declaration
- IEC-62474

Part Details

General

Status	Active
Category	D-Sub Connectors
Series	173107
Description	FCT Mixed Layout D-Sub Housing, Female, Tin-plated Shell, Polarized, #4-40 Self-Locking Clinch Nut, 3 Circuits Unloaded, Black Insulator
IP Rating	IP20
Magnetic	Yes
Product Name	FCT Products
Type	Mixed Layout
UPC	191130102310

Electrical

Shielded	Yes
----------	-----

Physical

Circuits (Loaded)	0
Circuits (maximum)	3
Color - Resin	Black
Gender	Female
Material - Resin	PBT
Material - Shell	Steel
Net Weight	6.700/g
Number of Rows	1
Packaging Type	Carton
Panel Mount	Rear
Panel Mount Method	Thread-In
PCB Locator	No
PCB Retention	None
Plating - Shell	Tin

Polarized to Mating Part	Yes
Ports	1
Temperature Range - Operating	-55° to +130°C
Waterproof / Dustproof	No
Waterproof / Dustproof Type	IP20

Mates With / Use With

Mates with Part(s)

Description	Part Number
Mates With	FCT Mixed Layout D-Sub, Size 2, 3W3C, Plug

Use with Part(s)

Description	Part Number
Use With	FCT Coaxial, High Power, High Voltage, or Pneumatic Contacts
