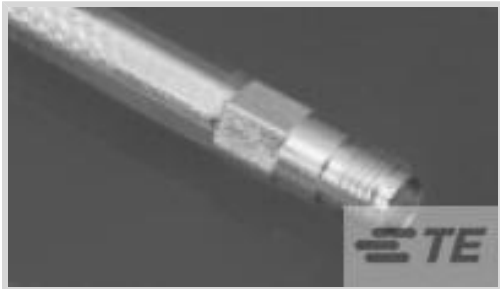




Connectors > RF Connectors > Coax Connectors



RF Interface: **SMA**

RF Connector Style: **Jack**

RF Connector Mated Outer Diameter (Approximate): **6.35 mm [.25 in]**

Impedance: **50 Ω**

Compatible With RF Cable Type: **RG 174, RG 188, RG 316**

Features

Product Type Features

Connector Seal & Plug Type	O-Ring
Connector Product Type	Connector Assembly
RF Interface	SMA
RF Connector Style	Jack
Compatible With RF Cable Type	RG 174, RG 188, RG 316
Connector System	Cable-to-Cable
Sealable	Yes
Connector & Contact Terminates To	Wire & Cable

Configuration Features

Number of Positions	1
Number of Coaxial Contacts	1

Electrical Characteristics

Impedance	50 Ω
-----------	------

Body Features

Cable Connector Orientation	Straight
Body Material	Stainless Steel
Body Material Finish	Passivated

Contact Features

Ferrule Material	Copper
------------------	--------



Crimp Type	Hexagonal Crimping
RF Connector Contact Configuration	Captivated Contacts
RF Connector Center Contact Underplating Material	Copper, Nickel
RF Connector Center Contact Plating Material	Gold (Au)
RF Connector Center Contact Material	Beryllium Copper

Termination Features

Termination Method to Wire & Cable	Crimp
------------------------------------	-------

Mechanical Attachment

RF Connector Coupling Mechanism	Threaded
Connector Mounting Type	Cable Mount (Free-Hanging)
RF Contact Captivation Method	Screw
Detent	Without

Dimensions

Product Length	36.5 mm[1.437 in]
RF Connector Mated Outer Diameter (Approximate)	6.35 mm[.25 in]

Packaging Features

Packaging Method	Package
------------------	---------

Other

Additional Features	Shrink Tubing
Dielectric Material	TFE Fluorocarbon

Product Compliance

For compliance documentation, visit the product page on TE.com>

EU RoHS Directive 2011/65/EU	Compliant with Exemptions
EU ELV Directive 2000/53/EC	Compliant with Exemptions
China RoHS 2 Directive MIIT Order No 32, 2016	Restricted Materials Above Threshold
EU REACH Regulation (EC) No. 1907/2006	Current ECHA Candidate List: JUNE 2024 (241) Candidate List Declared Against: JAN 2019 (197) Does not contain REACH SVHC
Halogen Content	Low Bromine/Chlorine - Br and Cl < 900 ppm per homogenous material. Also BFR /CFR/PVC Free



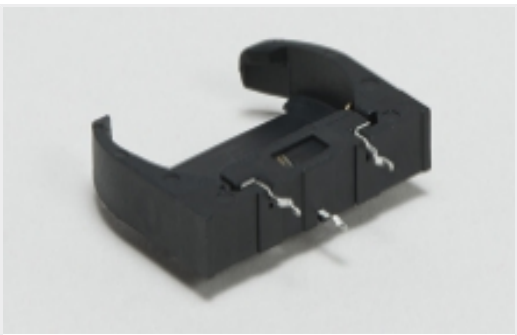
Solder Process Capability

Not applicable for solder process capability

Product Compliance Disclaimer

This information is provided based on reasonable inquiry of our suppliers and represents our current actual knowledge based on the information they provided. This information is subject to change. The part numbers that TE has identified as EU RoHS compliant have a maximum concentration of 0.1% by weight in homogenous materials for lead, hexavalent chromium, mercury, PBB, PBDE, DBP, BBP, DEHP, DIBP, and 0.01% for cadmium, or qualify for an exemption to these limits as defined in the Annexes of Directive 2011/65/EU (RoHS2). Finished electrical and electronic equipment products will be CE marked as required by Directive 2011/65/EU. Components may not be CE marked. Additionally, the part numbers that TE has identified as EU ELV compliant have a maximum concentration of 0.1% by weight in homogenous materials for lead, hexavalent chromium, and mercury, and 0.01% for cadmium, or qualify for an exemption to these limits as defined in the Annexes of Directive 2000/53/EC (ELV). Regarding the REACH Regulation, the information TE provides on SVHC in articles for this part number is based on the latest European Chemicals Agency (ECHA) 'Guidance on requirements for substances in articles' posted at this URL: <https://echa.europa.eu/guidance-documents/guidance-on-reach>

Also in the Series | SMA



Battery Holders(1)



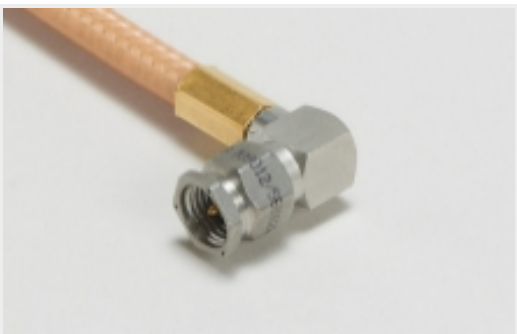
Connector Adapters & Connector Savers(8)



Connector Caps & Covers(3)

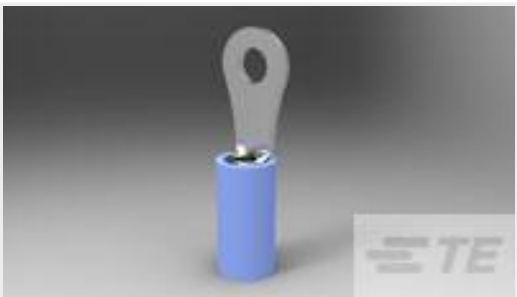


Connector Strain Relief(1)



RF Cable Assemblies(2)

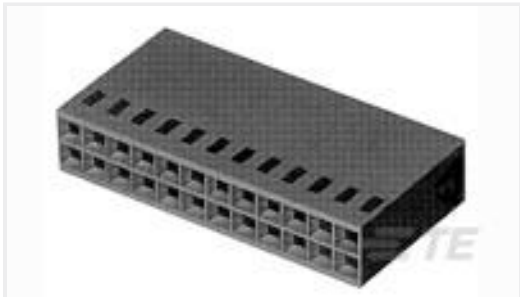
Customers Also Bought



TE Part #324159
TERM, RING, PIDG, 16-14, #4



TE Part #750648-000
D-1744-03



TE Part #3-87456-0
34 MODIV HSG DR MRKD .100CL



TE Part #6641710001
TMS-SCE-1/4-2.0-9



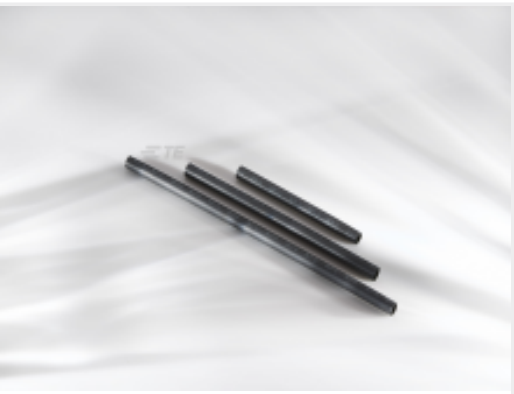
TE Part #CAT-R21-T790241
Single Wall NTFR: Heat Shrink Tubing,
1.75:1 Shrink Ratio



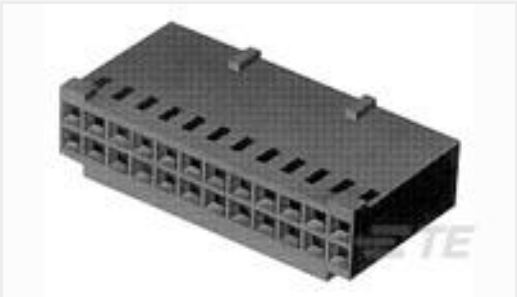
TE Part #YDTS26W15-35PAV001
PLUG ASSY



TE Part #102241-1
03 MODIV HSG COMP SR .100 POL



TE Part #206247P038
SCT-NO.4-E2-0-STK



TE Part #3-87977-2
14 MODIV HSG COMP DR .100 POL

Documents

Product Drawings

2032 5003 02

English

CAD Files

Customer View Model

ENG_CVM_1051855-1_A.3d_igs.zip

English

Customer View Model

ENG_CVM_1051855-1_A.3d_stp.zip

English

Customer View Model

ENG_CVM_1051855-1_A.2d_dxf.zip

English

3D PDF

English

By downloading the CAD file I accept and agree to the [Terms and Conditions](#) of use.

Datasheets & Catalog Pages

SMA Connectors

English

Instruction Sheets

Instruction Sheet (U.S.)

English