



Connectors > Connector Accessories > Connector Backshells > AMPSEAL 16 Connectors Backshell



Connector Backshell Product Type: **Backshell**

Primary Product Material: **PA**

Body Orientation: **Right Angle**

Number of Positions: **4**

Compatible With Connector Shape: **Rectangular**

[All AMPSEAL 16 Connectors Backshell \(81\)](#)

Features

Product Type Features

|                                  |           |
|----------------------------------|-----------|
| Connector Backshell Product Type | Backshell |
|----------------------------------|-----------|

Configuration Features

|                     |   |
|---------------------|---|
| Number of Positions | 4 |
|---------------------|---|

Body Features

|                          |       |
|--------------------------|-------|
| Primary Product Color    | Black |
| Primary Product Material | PA    |

Housing Features

|                                 |             |
|---------------------------------|-------------|
| Body Orientation                | Right Angle |
| Compatible With Connector Shape | Rectangular |

Usage Conditions

|                             |                            |
|-----------------------------|----------------------------|
| Operating Temperature Range | -40 – 125 °C[-40 – 257 °F] |
|-----------------------------|----------------------------|

Product Compliance

[For compliance documentation, visit the product page on TE.com>](#)



|   |   |
|---|---|
| EU RoHS Directive 2011/65/EU                  | Compliant   |
| EU ELV Directive 2000/53/EC                   | Compliant   |
| China RoHS 2 Directive MIIT Order No 32, 2016 | No Restricted Materials Above Threshold   |
| EU REACH Regulation (EC) No. 1907/2006        | Current ECHA Candidate List: JUNE 2024 (241)<br>Candidate List Declared Against: JUNE 2024 (241)<br>Does not contain REACH SVHC |
| Halogen Content                               | Low Halogen - Br, Cl, F, I < 900 ppm per homogenous material. Also BFR/CFR/PVC Free   |
| Solder Process Capability                     | Not applicable for solder process capability  |

Product Compliance Disclaimer

This information is provided based on reasonable inquiry of our suppliers and represents our current actual knowledge based on the information they provided. This information is subject to change. The part numbers that TE has identified as EU RoHS compliant have a maximum concentration of 0.1% by weight in homogenous materials for lead, hexavalent chromium, mercury, PBB, PBDE, DBP, BBP, DEHP, DIBP, and 0.01% for cadmium, or qualify for an exemption to these limits as defined in the Annexes of Directive 2011/65/EU (RoHS2). Finished electrical and electronic equipment products will be CE marked as required by Directive 2011/65/EU. Components may not be CE marked. Additionally, the part numbers that TE has identified as EU ELV compliant have a maximum concentration of 0.1% by weight in homogenous materials for lead, hexavalent chromium, and mercury, and 0.01% for cadmium, or qualify for an exemption to these limits as defined in the Annexes of Directive 2000/53/EC (ELV). Regarding the REACH Regulation, the information TE provides on SVHC in articles for this part number is based on the latest European Chemicals Agency (ECHA) 'Guidance on requirements for substances in articles' posted at this URL: <https://echa.europa.eu/guidance-documents/guidance-on-reach>

Compatible Parts



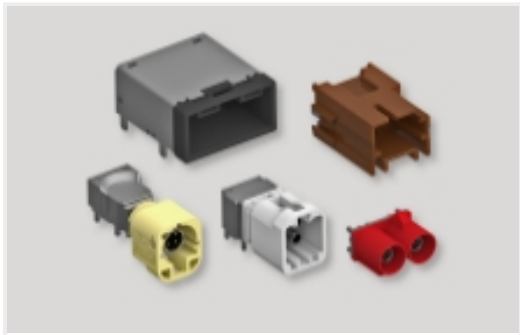
Also in the Series | AMPSEAL 16



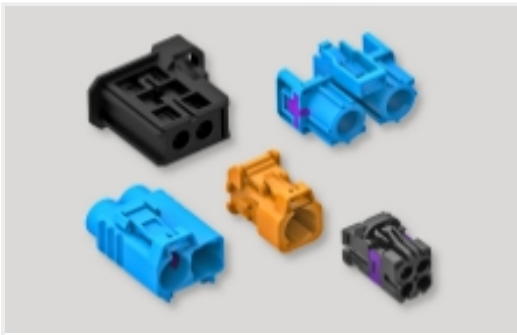
Automotive Connector Caps & Covers (5)



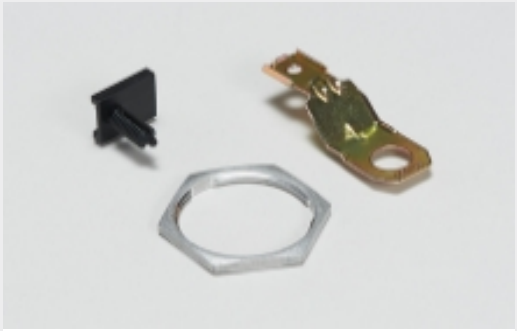
Automotive Terminals(35)



Data Connectivity Headers(2)



Data Connectivity Housings(3)



Other Automotive Connector Accessories(8)

Customers Also Bought



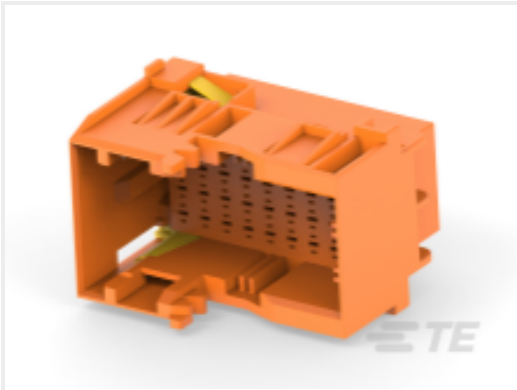
TE Part #YDTS24W19-11SNV001  
RECP ASSY



TE Part #2304372-1  
1-PORT MATENET HDR ASSY 90DEG, COD A



TE Part #YDTS24W11-02PNV001  
RECP ASSY



TE Part #1-2112891-6  
36POS,TAB 1.5X0.6,TAB HSG,ASSY



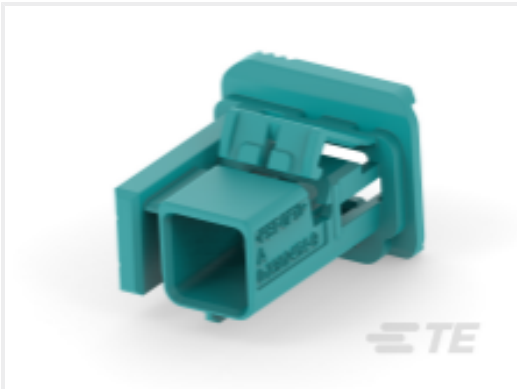
TE Part #2035366-1  
Backshell,AS16,2P,90deg,NC08,LP,Plug



TE Part #2383855-1  
STEEL,INNER FERRULE



TE Part #CAT-AQ4-HFFTH1000  
PowerTube HVP-HD 1000 Plug Pre-Assemblies



TE Part #2302454-9  
1-PORT MATENET FRAME,UTP, COD Z

Documents

Product Drawings  
Backshell,AS16,4P,90deg,NC12,LP,Cap  
English

CAD Files  
3D PDF  
3D  
Customer View Model  
ENG\_CVM\_CVM\_2098436-9\_A.2d\_dxf.zip



English

Customer View Model

[ENG\\_CVM\\_CVM\\_2098436-9\\_A.3d\\_igs.zip](#)

English

Customer View Model

[ENG\\_CVM\\_CVM\\_2098436-9\\_A.3d\\_stp.zip](#)

English

By downloading the CAD file I accept and agree to the [Terms and Conditions](#) of use.

[Product Specifications](#)

[Application Specification](#)

English