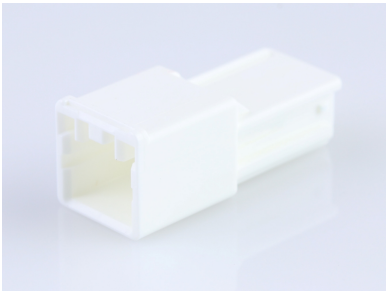




Part Number : [5046940200](#)
Product Description : CP-3.3 Plug Housing,
3.30mm Pitch, Single Row, Polarized, Positive
Inertia Lock, 2 Circuits, Natural
Series Number : 504694
Status : Active
Product Category : Connector Housings



Documents & Resources


Drawings
[5046940200_sd.pdf](#)

3D Models and Design Files
[5046940200_stp.zip](#)

Specifications
[AS-504693-001-001.pdf](#)
[AS-504693-002-001.pdf](#)
[SPK-504694-001-001.pdf](#)
[PS-504693-001-001.pdf](#)

Product Environment Compliance

Compliance

GADSL/IMDS	Not Relevant
China RoHS	
EU ELV	Not Relevant
Low-Halogen Status	Not Low-Halogen per IEC 61249-2-21
REACH SVHC	Not Contained per D(2024)7663-DC (21 Jan 2025)
EU RoHS	Compliant per EU 2015/863

Multiple Part Product Compliance Statements

- Eu RoHS
- REACH SVHC
- Low-Halogen

Multiple Part Industry Compliance Documents

- IPC 1752A Class C
- IPC 1752A Class D
- Molex Product Compliance Declaration
- IEC-62474
- chemSHERPA (xml)

EU RoHS Certificate of Compliance

Part Details

General

Status	Active
Category	Connector Housings
Series	504694
Description	CP-3.3 Plug Housing, 3.30mm Pitch, Single Row, Polarized, Positive Inertia Lock, 2 Circuits, Natural
Application	Signal, Wire-to-Wire
Product Name	CP-3.3
UPC	887191361369

Agency

UL	E29179
----	--------

Physical

Circuits (maximum)	2
Color - Resin	Natural
Flammability	94V-0
Gender	Plug
Glow-Wire Capable	No
Keying to Mating Part	Yes
Lock to Mating Part	Yes
Material - Resin	PBT
Net Weight	1132.000/mg
Number of Rows	1
Packaging Type	Bag
Panel Mount	No
Pitch - Mating Interface	3.30mm

Pitch - Termination Interface	3.30mm
Polarized to Mating Part	Yes
Stackable	No
Temperature Range - Operating	-40° to +105°C

Mates With / Use With

Mates with Part(s)

Description	Part Number
CP-3.3 Receptacle Housing, 3.30mm Pitch, Single Row, Polarized, Positive Inertia Lock, 2 Circuits, Natural	<u>5046930200</u>

Use with Part(s)

Description	Part Number
CP-3.3 Terminal Position Assurance (TPA) Retainers	<u>504695</u>
2.50mm and 3.30mm Pitch Male Crimp Terminals	<u>50398</u>
2.50mm and 3.30mm Pitch Male Crimp Terminals	<u>505608</u>