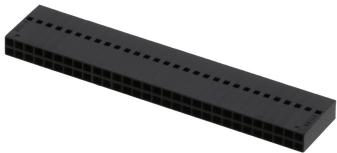




Part Number : [901430060](#)
Product Description : 2.54mm Pitch C-Grid III
Modular Crimp Housing, Dual Row, 60
Circuits, Black
Series Number : 90143
Status : Active
Product Category : Connector Housings



Documents & Resources

Drawings
[901430060_sd.pdf](#)

3D Models and Design Files
[901430060_stp.zip](#)

Specifications
[PS-99020-0001-001.pdf](#)

Product Environment Compliance

Compliance

GADSL/IMDS	Not Relevant
China RoHS	
EU ELV	Not Relevant
Low-Halogen Status	Low-Halogen per IEC 61249-2-21
REACH SVHC	Contains Triphenyl-phosphate per D(2024)6225-DC (07 Nov 2024)
EU RoHS	Compliant per EU 2015/863

Multiple Part Product Compliance Statements

- Eu RoHS
- REACH SVHC
- Low-Halogen

Multiple Part Industry Compliance Documents

- IPC 1752A Class C
- IPC 1752A Class D
- Molex Product Compliance Declaration

- IEC-62474
- chemSHERPA (xml)

EU RoHS Certificate of Compliance

Part Details

General

Status	Active
Category	Connector Housings
Series	90143
Description	2.54mm Pitch C-Grid III Modular Crimp Housing, Dual Row, 60 Circuits, Black
Application	Signal, Wire-to-Board
Comments	No Buttons
Product Name	C-Grid III
UPC	800753530560

Agency

UL	E29179
----	--------

Physical

Breakaway	No
Circuits Detail	No Voided Circuits
Circuits (maximum)	60
Color - Resin	Black
Flammability	94V-1
Gender	Receptacle
Glow-Wire Capable	No
Keying to Mating Part	None
Lock to Mating Part	None
Material - Resin	PPO
Net Weight	3.420/g
Number of Rows	2
Packaging Type	Bag
Panel Mount	No

Pitch - Mating Interface	2.54mm
Pitch - Termination Interface	2.54mm
Polarized to Mating Part	No
Ports	1
Stackable	Yes
Temperature Range - Operating	-55° to +105°C

Mates With / Use With

Mates with Part(s)

Description	Part Number
C-Grid III Right-Angle Dual Row Headers	<u>90122</u>
C-Grid III Dual Row Headers	<u>90130</u>
C-Grid III Vertical Dual Row Headers	<u>90131</u>

Use with Part(s)

Description	Part Number
Pre-Crimped Lead C-Grid III Female-to-C-Grid III Female, Tin (Sn) Plating, 150.00mm Length, 22 AWG, Black	<u>797582022</u>
Pre-Crimped Lead C-Grid III Female-to-C-Grid III Female, Tin (Sn) Plating, 300.00mm Length, 22 AWG, Black	<u>797582023</u>
C-Grid III Female Crimp Terminals	<u>90119</u>