



DEUTSCH

TE Internal #: ZPF000000000000440
Pin Contact, 115 VAC, 115 VDC, Spring Contact Retention, Size 20
Contact Size, Discrete Wire, 24 – 20 AWG, .25 – .5 mm² Wire,
Crimp, Chromel, Sealable

[View on TE.com >](#)

Connectors > Contacts > Connector Contacts



Contact Type: **Pin**
Operating Voltage: **115 VDC**
Contact Retention Within Housing: **With**
Contact Retention Type Within Housing: **Spring**

Features

Product Type Features

Sealable	Yes
----------	-----

Configuration Features

Compatible With Wire & Cable Type	Discrete Wire
-----------------------------------	---------------

Electrical Characteristics

Operating Voltage	115 VDC
-------------------	---------

Contact Features

Barrel Type	Closed
Contact Type	Pin
Contact Retention Within Housing	With
Contact Size	Size 20
Contact Base Material	Chromel
Contact Current Rating (Max)	7.5 A

Termination Features

Termination Method to Wire & Cable	Crimp
Product Terminates To	Wire & Cable

Mechanical Attachment

Contact Retention Type Within Housing	Spring
---------------------------------------	--------



Dimensions

Wire Size	.25 – .5 mm ²
-----------	--------------------------

Usage Conditions

Operating Temperature Range	-65 – 200 °C[-85 – 392 °F]
-----------------------------	----------------------------

Operation/Application

Circuit Application	Power, Signal & High Speed Data
---------------------	---------------------------------

Product Compliance

For compliance documentation, visit the product page on [TE.com](#)>

EU RoHS Directive 2011/65/EU	Compliant
EU ELV Directive 2000/53/EC	Compliant
China RoHS 2 Directive MIIT Order No 32, 2016	No Restricted Materials Above Threshold
EU REACH Regulation (EC) No. 1907/2006	Current ECHA Candidate List: JUNE 2024 (241) Candidate List Declared Against: JAN 2024 (240) Does not contain REACH SVHC
Halogen Content	Low Halogen - Br, Cl, F, I < 900 ppm per homogenous material. Also BFR/CFR/PVC Free
Solder Process Capability	Not reviewed for solder process capability

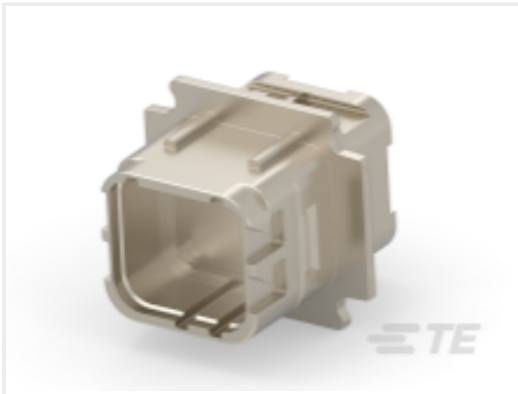
Product Compliance Disclaimer

This information is provided based on reasonable inquiry of our suppliers and represents our current actual knowledge based on the information they provided. This information is subject to change. The part numbers that TE has identified as EU RoHS compliant have a maximum concentration of 0.1% by weight in homogenous materials for lead, hexavalent chromium, mercury, PBB, PBDE, DBP, BBP, DEHP, DIBP, and 0.01% for cadmium, or qualify for an exemption to these limits as defined in the Annexes of Directive 2011/65/EU (RoHS2). Finished electrical and electronic equipment products will be CE marked as required by Directive 2011/65/EU. Components may not be CE marked. Additionally, the part numbers that TE has identified as EU ELV compliant have a maximum concentration of 0.1% by weight in homogenous materials for lead, hexavalent chromium, and mercury, and 0.01% for cadmium, or qualify for an exemption to these limits as defined in the Annexes of Directive 2000/53/EC (ELV). Regarding the REACH Regulations, TE’s information on SVHC in articles for this part number is still based on the European Chemical Agency (ECHA) ‘Guidance on requirements for substances in articles’(Version: 2, April 2011), applying the 0.1% weight on weight concentration threshold at the finished product level. TE is aware of the European Court of Justice ruling of September 10th, 2015 also known as O5A (Once An Article Always An Article) stating that, in case of ‘complex object’, the threshold for a SVHC must be applied to both the product as a whole and simultaneously to each of the articles forming part of its composition. TE has evaluated this ruling based on the new ECHA “Guidance on requirements for substances in articles” (June 2017, version 4.0) and will be updating its statements accordingly.

Customers Also Bought



TE Part #2180283001
55A0811-18-2



TE Part #CAT-DMC-MD-26
Rectangular Connector Receptacle
Extenders, Tool-less Assembly



TE Part #ZPF000000000148762
DMC-M 99-04 AN (=33537-P0000)



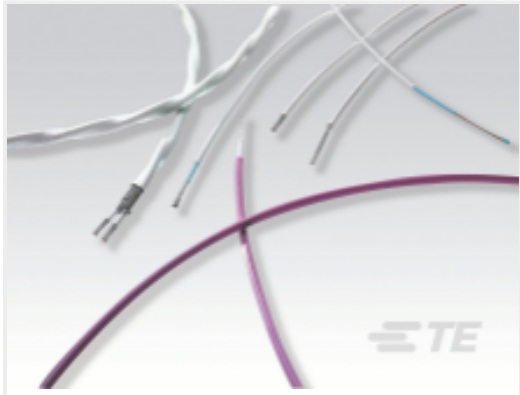
TE Part #1757624-1
SZ 8 COAX PIN,RG142,HEX CRIMP



TE Part #YDTS26W17-08AAV001
PLUG ASSY



TE Part #205162-6
AMPLIMITE,ASY,PLUG,109,1



TE Part #2180273001
55A0811-18-0



TE Part #ZPF000000000200230
724-0001-24