



Terminals & Splices > Ring Terminals



Ring Terminal Product Type: Closed Ring Tongue Terminal

Wire Size: 509 – 3260 CMA

Stud Size: #4, M2.5

Features

Product Type Features

| | |
|----------------------------|-----------------------------|
| Ring Terminal Product Type | Closed Ring Tongue Terminal |
| Stud Size | #4, M2.5 |
| Sealable | No |

| | |
|--|------------------------|
| Wire Insulation Support Retention Type | Non-Insulation Support |
|--|------------------------|

Configuration Features

| | |
|-----------------|---|
| Number of Holes | 1 |
|-----------------|---|

Body Features

| | |
|----------------|--------|
| Product Weight | .544 g |
|----------------|--------|

Contact Features

| | |
|---------------------------|----------|
| Barrel Type | Closed |
| Terminal Orientation | Straight |
| Terminal Plating Material | Tin |

Mechanical Attachment

| | |
|-------------------------|---------|
| Wire Insulation Support | Without |
|-------------------------|---------|

Dimensions

| | |
|------------------------|-------------------|
| Wire Size | 509 – 3260 CMA |
| Stud Diameter | 3.02 mm[.119 in] |
| Product Length | 14.58 mm[.574 in] |
| Barrel Inside Diameter | 1.65 mm[.065 in] |

Usage Conditions

| | |
|-------------------|-------------|
| Insulation Option | Uninsulated |
|-------------------|-------------|

Operation/Application

| | |
|---------------------------------------|--------|
| Compatible With Wire Base Material | Copper |
| Compatible With Wire Plating Material | Tin |

Industry Standards

| | |
|-------------------------------|----|
| Government Qualified Terminal | No |
|-------------------------------|----|

Packaging Features

| | |
|--------------------|---------|
| Packaging Quantity | 1000 |
| Packaging Method | Package |

Other

| | |
|------|--------|
| Line | Budget |
|------|--------|

Product Compliance

For compliance documentation, visit the product page on TE.com>

| | |
|---|---|
| EU RoHS Directive 2011/65/EU | Compliant |
| EU ELV Directive 2000/53/EC | Compliant |
| China RoHS 2 Directive MIIT Order No 32, 2016 | No Restricted Materials Above Threshold |
| EU REACH Regulation (EC) No. 1907/2006 | Current ECHA Candidate List: JUNE 2024 (241) Candidate List Declared Against: JUNE 2024 (241) Does not contain REACH SVHC |
| Halogen Content | Low Halogen - Br, Cl, F, I < 900 ppm per homogenous material. Also BFR/CFR/PVC Free |
| Solder Process Capability | Not applicable for solder process capability |

Product Compliance Disclaimer

This information is provided based on reasonable inquiry of our suppliers and represents our current actual knowledge based on the information they provided. This information is subject to change. The part numbers that TE has identified as EU RoHS compliant have a maximum concentration of 0.1% by weight in homogenous materials for lead, hexavalent



chromium, mercury, PBB, PBDE, DBP, BBP, DEHP, DIBP, and 0.01% for cadmium, or qualify for an exemption to these limits as defined in the Annexes of Directive 2011/65/EU (RoHS2). Finished electrical and electronic equipment products will be CE marked as required by Directive 2011/65/EU. Components may not be CE marked. Additionally, the part numbers that TE has identified as EU ELV compliant have a maximum concentration of 0.1% by weight in homogenous materials for lead, hexavalent chromium, and mercury, and 0.01% for cadmium, or qualify for an exemption to these limits as defined in the Annexes of Directive 2000/53/EC (ELV). Regarding the REACH Regulation, the information TE provides on SVHC in articles for this part number is based on the latest European Chemicals Agency (ECHA) 'Guidance on requirements for substances in articles' posted at this URL: <https://echa.europa.eu/guidance-documents/guidance-on-reach>

Compatible Parts

TE Part # 58509-1
PRO-CRIMPER DIE BUDGET

TE Part # 58508-1
PRO-CRIMPER HD TL W/DIE BUDGET

Also in the Series | SOLISTRAND Budget

Knife Disconnects(4)

Ring Terminals(106)

Spade Terminals(46)

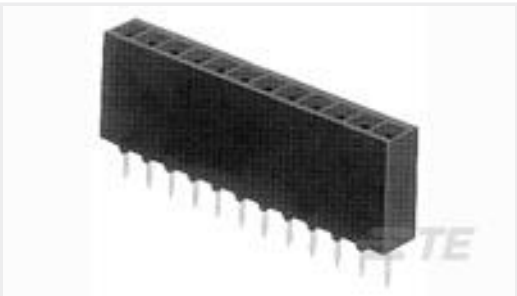
Customers Also Bought

TE Part #5499923-8
A/L UNIV HDR 34P VERT LAT

TE Part #7-534998-5
50 MODIV VRT DR CE 100/125

TE Part #1-6609027-3
10EK1=F7093 S0

TE Part #102107-3
MOD IV PIN LP



TE Part #2-87879-1
26 MODIV VRT SR OE 100/115



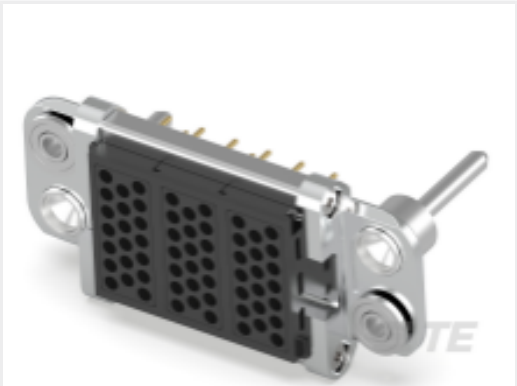
TE Part #6-534998-0
20 MODIV VRT DR CE 100/125



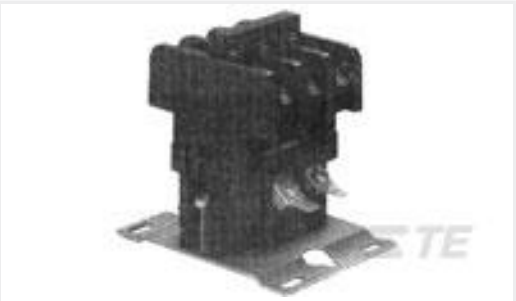
TE Part #5745072-2
HD-20 PLUG 15P VERT FFSCRLK



TE Part #1393763-1
V23100V4005A



TE Part #6766070-1
CONNECTOR, PIN, DOMINO



TE Part #2-1393132-6
P25P42D22P1-24=CONTACTORS

Documents

Product Drawings

BUDG R 22-16 COMM 22-18 MIL 4

English

CAD Files

3D PDF

3D

Customer View Model

ENG_CVM_CVM_31262_AL.2d_dxf.zip

English

Customer View Model

ENG_CVM_CVM_31262_AL.3d_igs.zip

English

Customer View Model

ENG_CVM_CVM_31262_AL.3d_stp.zip

English

By downloading the CAD file I accept and agree to the [Terms and Conditions](#) of use.

Instruction Sheets

Instruction Sheet (U.S.)

English

Agency Approvals

UL Report

English