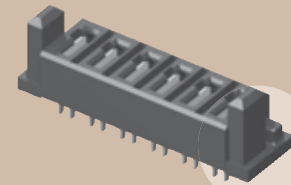


MPS-02-7.70-01-L-V



MPS-06-7.70-01-L-V

POWERSTRIP™/25 SOCKET MPS SERIES

SPECIFICATIONS

For complete specifications see www.samtec.com?MPS

Insulator Material:

Black LCP

Terminal Material:

Copper Alloy

Plating:

Sn or Au over 50µ" (1,27µm) Ni

Operating Temp Range:

-55°C to +105°C with Tin

-55°C to +125°C with Gold

RoHS Compliant:

Yes

Processing:

Max Processing Temp:

230°C for 60 seconds, or

260°C for 20 seconds 3x

Lead-Free Solderable:

Yes

Mates with:
MPT

Dual leaf blade contacts

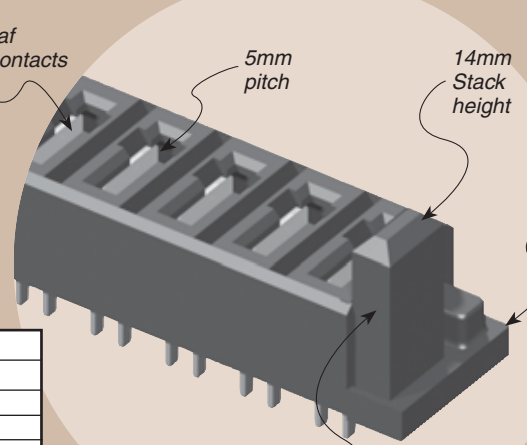
5mm pitch

14mm Stack height

Mate available for perpendicular board mating

AMBIENT TEMP	CURRENT RATING	
	MPT-V/MPS-V	
	2 PINS	4 PINS
20°C	48A	40A
40°C	40A	35A
60°C	33A	29A
75°C	27.9A	23.2A

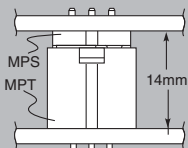
-T PLATING



Polarized Guide Posts



STACK HEIGHT



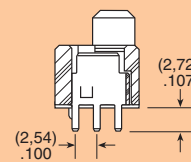
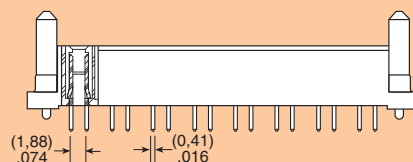
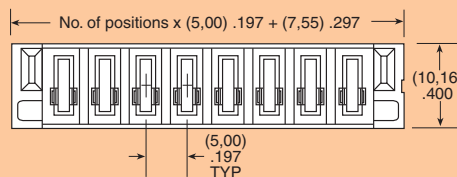
ALSO AVAILABLE

- Power/Signal combination Sockets. See MPSC Series.
- High Power Sockets. See PES Series.

APPLICATION SPECIFIC OPTION

- Locking Clip Call Samtec.

MPS	POWER PINS	LEAD STYLE	TAIL LENGTH	PLATING OPTION	V
	-02, -04, -06, -08	-7.70 = (7,70mm) .303"	-01 = Use with (1,60mm) .062" Thick PCB	-L = 10µ" (0,25µm) Gold on contact, Matte Tin on tail -T = Matte Tin	



Note: Some sizes, styles and options are non-standard, non-returnable.

Due to technical progress, all designs, specifications and components are subject to change without notice.

WWW.SAMTEC.COM