

High Precision Thin Film Chip Resistors

WF25T/U, WF20T/U, WF10T/U, WF12T/U, WF08T/U, WF06T/U, WF04T/U & WF02T/U

multicompPRO

**RoHS
Compliant**



Description

The resistors are constructed in a high grade ceramic body (aluminium oxide). Internal metal electrodes are added at each end and connected by a resistive layer that is applied to the top surface of the substrate. The composition of the resistive layer is adjusted to give the approximate resistance required and the value is trimmed to nominated value within tolerance which controlled by laser trimming of this resistive layer.

The resistive layer is covered with a protective coat. Finally, the two external end terminations are added. For environmental soldering issue, the outer layer of these end terminations is a Lead-free solder.

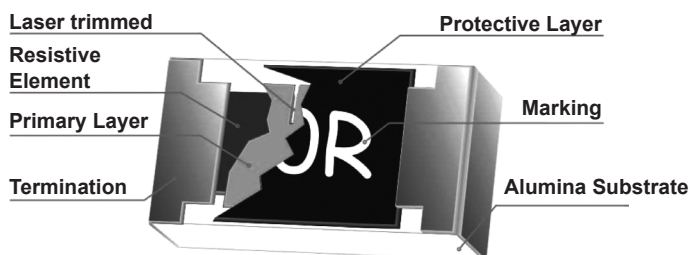
Features

- SMD metal film resistor
- High reliability and stability of 0.25%
- High performance of TCR: 50 & 25 ppm/°C
- Low current noise and lead free

Application

- Medical equipment
- Measuring instrument
- Communication device
- Computer and Printer

Construction of Chip-R



Quick Reference Data

| Item | General Specification | | | | | | | |
|--|---|----------------|------------------|----------------|----------------|----------------|----------------|-------------------------|
| Series No. | WF25 T & U | WF20 T & U | WF10 T & U | WF12 T & U | WF08 T & U | WF06 T & U | WF04 T & U | WF02 T & U |
| Size code | 2512 (6432) | 2010 (5025) | 1210 (3225) | 1206 (3216) | 0805 (2012) | 0603 (1608) | 0402 (1005) | 0201 (0603) |
| Resistance Tolerance | ±1%, ±0.5%, ±0.25%, ±0.1%, ±0.05%, ±0.02%, ±0.01% | | | | | | | ±1%, ±0.5%, ±0.1% |
| Resistance Range | 1Ω ~ 3MΩ | 4.7Ω ~ 3MΩ | 4.7Ω ~ 2.49MΩ | 1Ω ~ 2.49MΩ | 4.7Ω ~ 2MΩ | 4.7Ω ~ 1MΩ | 10Ω ~ 255KΩ | 100Ω ~ 2KΩ |
| TCR (ppm/°C) | ±50 & 25 ppm/°C | | | | | | | |
| Max. dissipation at T _{amb} =70°C | 3/4W | 1/2W | 1/4W | 1/8W | 1/10W | 1/16W | 1/16W | 1/32W |
| Max. Operation Voltage | 200V | 200V | 200V | 200V | 100V | 50V | 50V | 15V |
| Max. Overload Voltage | 400V | 400V | 400V | 400V | 200V | 100V | 100V | 30V |
| Operation Temperature | -55°C ~ +155°C | | | | | | | |

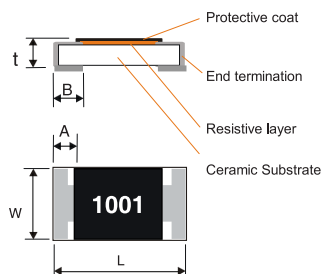
Note:

1. This is the maximum voltage that may be continuously supplied to the resistor element, see "IEC publication 60115-8"
2. Max. Operation Voltage : So called RCWV (Rated Continuous Working Voltage) is determined by
$$RCWV = \sqrt{\text{Rated Power} \times \text{Resistance Value}}$$
 or Max. RCWV listed above, whichever is lower.

Newark.com/multicomp-pro
Farnell.com/multicomp-pro
sg.element14.com/b/multicomp-pro

multicompPRO

Mechanical Data



| Type | WF25T&U | WF20T&U | WF10T&U | WF12T&U | WF08T&U | WF06T&U | WF04T&U | WF02T&U |
|------|-----------|-----------|-----------|------------|-----------|------------|------------|------------|
| L | 6.35 ±0.1 | 5 ±0.1 | 3.1 ±0.1 | 3.05 ±0.15 | 2 ±0.1 | 1.55 ±0.1 | 1 ±0.1 | 0.6 ±0.03 |
| W | 3.2 ±0.15 | 2.5 ±0.15 | 2.6 ±0.15 | 1.55 ±0.15 | 1.25 ±0.1 | 0.8 ±0.1 | 0.5 ±0.05 | 0.3 ±0.03 |
| A | 0.6 ±0.2 | 0.6 ±0.2 | 0.5 ±0.2 | 0.4 ±0.2 | 0.25 ±0.2 | 0.25 ±0.15 | 0.3 ±0.15 | 0.1 ±0.05 |
| B | 0.9 ±0.25 | 0.6 ±0.25 | 0.5 ±0.2 | 0.4 ±0.2 | 0.4 ±0.2 | 0.3 ±0.15 | 0.3 ±0.15 | 0.15 ±0.05 |
| t | 0.55 ±0.1 | 0.55 ±0.1 | 0.55 ±0.1 | 0.55 ±0.15 | 0.5 ±0.15 | 0.45 ±0.15 | 0.35 ±0.05 | 0.23 ±0.03 |

Dimensions : Millimetres

Marking

3-digits marking for 0603 size

WFxx T/ U has same marking rule as WRxx ±1%.

| Nominal resistance | Description |
|--------------------|---|
| 1. E-24 series | As 0603 WR06X ±5%. |
| 2. E-96 series | The 1st two digit codes are referring to the CODE on the table, the 3rd code is the index of resistance value : Y=10 ⁻² , X=10 ⁻¹ , A=10 ⁰ , B=10 ¹ , C=10 ² , D=10 ³ , E=10 ⁴ , F=10 ⁵ EX : 17.8Ω=25X, 178Ω=25A, 1K78 =25B 17K8=25C, 178K=25D, 1M78=25E |
| 3. Remark | There is no marking for the items are not under E-24 and E-96 series |

| CODE | R_value | CODE | R_value | CODE | R_value | CODE | R_value | CODE | R_value | CODE | R_value | CODE | R_value | CODE | R_value |
|------|---------|------|---------|------|---------|------|---------|------|---------|------|---------|------|---------|------|---------|
| 01 | 100 | 13 | 133 | 25 | 178 | 37 | 237 | 49 | 316 | 61 | 422 | 73 | 562 | 85 | 750 |
| 02 | 102 | 14 | 137 | 26 | 182 | 38 | 243 | 50 | 324 | 62 | 432 | 74 | 576 | 86 | 768 |
| 03 | 105 | 15 | 140 | 27 | 187 | 39 | 249 | 51 | 332 | 63 | 442 | 75 | 590 | 87 | 787 |
| 04 | 107 | 16 | 143 | 28 | 191 | 40 | 255 | 52 | 340 | 64 | 453 | 76 | 604 | 88 | 806 |
| 05 | 110 | 17 | 147 | 29 | 196 | 41 | 261 | 53 | 348 | 65 | 464 | 77 | 619 | 89 | 825 |
| 06 | 113 | 18 | 150 | 30 | 200 | 42 | 267 | 54 | 357 | 66 | 475 | 78 | 634 | 90 | 845 |
| 07 | 115 | 19 | 154 | 31 | 205 | 43 | 274 | 55 | 365 | 67 | 487 | 79 | 649 | 91 | 866 |
| 08 | 118 | 20 | 158 | 32 | 210 | 44 | 280 | 56 | 374 | 68 | 499 | 80 | 665 | 92 | 887 |
| 09 | 121 | 21 | 162 | 33 | 215 | 45 | 287 | 57 | 383 | 69 | 511 | 81 | 681 | 93 | 909 |
| 10 | 124 | 22 | 165 | 34 | 221 | 46 | 294 | 58 | 392 | 70 | 523 | 82 | 698 | 94 | 931 |
| 11 | 127 | 23 | 169 | 35 | 226 | 47 | 301 | 59 | 402 | 71 | 536 | 83 | 715 | 95 | 953 |
| 12 | 130 | 24 | 174 | 36 | 232 | 48 | 309 | 60 | 412 | 72 | 549 | 84 | 732 | 96 | 976 |

4-digits marking for 2512, 2010, 1210, 1206, 0805 size

For E24+E96, each resistor is marked with a four digits code on the protective coating to designate the nominal resistance value. For values below 97Ω the R is used as a digit. For values of 100Ω or greater, the first 3 digits are significant, the fourth digit indicates the number of multiple to follow.

Example

| Resistance | 100Ω | 6800Ω | 47000Ω |
|------------------|------|-------|--------|
| 4-digits marking | 1000 | 6801 | 4702 |

No marking code for 0402 and 0201 size

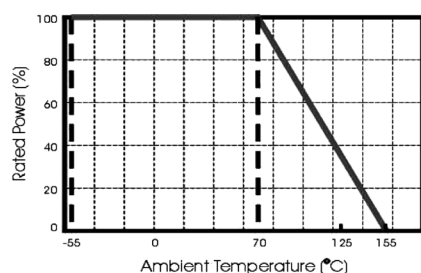
Functional Description

Product characterization

Standard values of nominal resistance are taken from the E192 & E24 series for resistors with a tolerance of $\pm 1\%$, $\pm 0.5\%$, $\pm 0.25\%$, $\pm 0.1\%$, $\pm 0.05\%$. The values of the E24/E192 series are in accordance with "IEC publication 60063".

Derating

The power that the resistor can dissipate depends on the operating temperature.



Max. Dissipation in percentage of rated power
As a function of the ambient temperature

Mounting

Due to their rectangular shapes and small tolerances, Surface Mountable Resistors are suitable for handling by automatic placement systems.

Chip placement can be on ceramic substrates and printed-circuit boards (PCBs).

Electrical connection to the circuit is by individual soldering condition.

The end terminations guarantee a reliable contact.

Soldering Condition

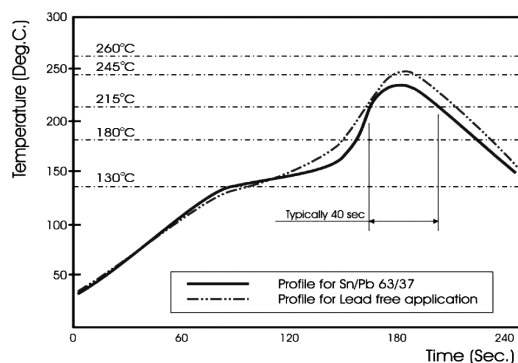
The robust construction of chip resistors allows them to be completely immersed in a solder bath of 260°C for 10 seconds. Therefore, it is possible to mount Surface Mount Resistors on one side of a PCB and other discrete components on the reverse (mixed PCBs).

Surface Mount Resistors are tested for solderability at 235°C during 2 seconds within lead-free solder bath. The test condition for no leaching is 260°C for 30 seconds. Typical examples of soldering processes that provide reliable joints without any damage are given in below figure.

High Precision Thin Film Chip Resistors

WF25T/U, WF20T/U, WF10T/U, WF12T/U, WF08T/U, WF06T/U, WF04T/U & WF02T/U

multicompPRO



Infrared soldering profile for Chip Resistors

Infrared soldering condition for Chip Resistors

| Temperature Condition | Exposure Time |
|---------------------------------------|-----------------------------|
| Average ramp-up rate (217°C to 260°C) | Less than 3°C/second |
| Between 150 and 200°C | Between 60-120 seconds |
| > 217°C | Between 60-150 seconds |
| Peak Temperature | 260°C +0/-5°C |
| Time within 245°C | Min. 30 seconds |
| Ramp-down rate (Peak to 217°C) | Less than 6°C/second |
| Time from 25°C to Peak | No greater than 480 seconds |

Catalogue Numbers

The resistors have a catalogue number starting with

| WF06 | U | XXXX | D | T | L |
|--|--|---|--|--|--|
| Size code WF25: 2512 WF20: 2010 WF10: 1210 WF12: 1206 WF08: 0805 WF06: 0603 WF04: 0402 WF02: 0201 | Type code T: TCR= 50ppm U: TCR= 25ppm | Resistance code R is first code followed by 3 significant digits. 100Ω = 1000 37.4kΩ = 3742 | Tolerance T : ±0.01% U : ±0.02% A : ±0.05% B : ±0.10% C : ±0.25% D : ±0.50% F : ±1.00% | Packaging code T : 7" Taped &Reel A : 7" Reel 15k pcs | Termination code L : lead free |

1. Reeled tape packaging: 8mm width paper taping.
5,000pcs/reel for WF10, WF12, WF08, WF06;
10,000pcs/reel for WF04;
15,000pcs/real for WF02.
2. Reeled tape packaging: 12mm width paper taping
4,000pcs/reel for WF25,WF20.

Newark.com/multicomp-pro
Farnell.com/multicomp-pro
sg.element14.com/b/multicomp-pro

multicompPRO

Test And Requirements

Basic specification : JIS C 5201-1 : 1998

| Test | Procedure | Requirement |
|--|---|---|
| DC resistance | DC resistance values measured | Within the specified tolerance |
| Temperature Coefficient of Resistance (TCR) | Natural resistance change per change in degree Centigrade. $\frac{R_2 - R_1}{R_1(t_2 - t_1)} \times 10^6 \quad (\text{ppm}/^\circ\text{C})$ R1 : Resistance at reference temperature R2 : Resistance at test temperature t1 : 20°C +5°C -1°C. t2 : 125°C +5°C -1°C. | Refer to "Quick Reference Data" |
| Short time overload (S.T.O.L) | Permanent resistance change after a 5 second application of a voltage 2.5 times RCWV or the maximum overload voltage specified in the above list, whichever is less. | $\Delta R/R$ max. $\pm(0.1\% + 0.05\Omega)$ |
| Resistance to soldering heat (R.S.H) | Un-mounted chips completely immersed for 10±1second in a SAC solder bath at 260°C ±5°C. | No visible damage $\Delta R/R$ max. $\pm(0.1\% + 0.05\Omega)$ |
| Solderability | Un-mounted chips completely immersed for 2 ±0.5 second in a SAC solder bath at 235°C ±5°C. | Good tinning (>95% covered) No visible damage |
| Temperature cycling | 1. 30 minutes at -55°C ±3°C, 2. 2~3 minutes at 20°C +5°C-1°C, 3. 30 minutes at +155° ±3°C, 4. 2~3 minutes at 20°C +5°C-1°C, Total 5 continuous cycles. | No visible damage $\Delta R/R$ max. $\pm(0.25\% + 0.05\Omega)$ |
| Load life (endurance) | 70±2°C, 1000 hours, loaded with RCWV or Vmax, 1.5 hours on and 0.5 hours off | $\Delta R/R$ max. $\pm(0.25\% + 0.05\Omega)$ |
| Humidity | 1000 +48/-0 hours, loaded with RCWV or Vmax in humidity chamber controller at 40°C±2°C and 90~95% relative humidity, 1.5 hours on and 0.5 hours off. | $\Delta R/R$ max. $\pm(0.25\% + 0.05\Omega)$ |
| Bending strength | Resistors mounted on a 90mm glass epoxy resin PCB(FR4); bending : 3mm, once for 10 seconds. | $\Delta R/R$ max. $\pm(0.1\% + 0.05\Omega)$ |
| Adhesion | Pressurizing force: 5N, Test time: 10±1sec. | No remarkable damage or removal of the terminations |

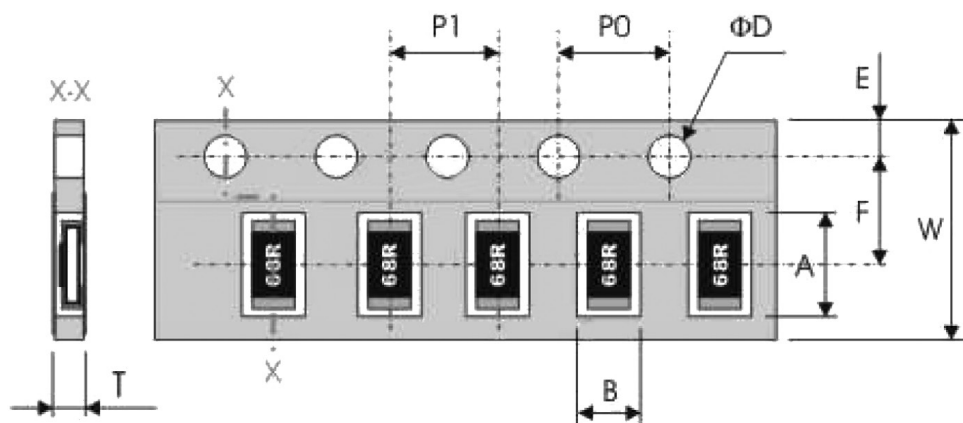
High Precision Thin Film Chip Resistors

WF25T/U, WF20T/U, WF10T/U, WF12T/U, WF08T/U, WF06T/U, WF04T/U & WF02T/U

multicompPRO

Packaging

Paper Tape specifications



| Series No. | Tape | A | B | W | F | E |
|------------|---------|------------|------------|---------|-----------|-----------|
| WF25 | Plastic | 6.9 ±0.2 | 3.6 ±0.2 | 12 ±0.3 | 5.5 ±0.1 | 1.75 ±0.1 |
| WF20 | Plastic | 5.5 ±0.2 | 2.8 ±0.2 | 12 ±0.3 | 5.5 ±0.1 | 1.75 ±0.1 |
| WF12 | Paper | 3.6 ±0.2 | 2 ±0.2 | 8 ±0.3 | 3.5 ±0.2 | 1.75 ±0.1 |
| WF10 | Paper | 3.6 ±0.2 | 3 ±0.2 | 8 ±0.3 | 3.5 ±0.2 | 1.75 ±0.1 |
| WF08 | Paper | 2.4 ±0.2 | 1.65 ±0.2 | 8 ±0.3 | 3.5 ±0.2 | 1.75 ±0.1 |
| WF06 | Paper | 1.9 ±0.2 | 1.1 ±0.2 | 8 ±0.3 | 3.5 ±0.2 | 1.75 ±0.1 |
| WF04 | Paper | 1.2 ±0.1 | 0.7 ±0.1 | 8 ±0.2 | 3.5 ±0.05 | 1.75 ±0.1 |
| WF02 | Paper | 0.67 ±0.05 | 0.37 ±0.05 | 8 ±0.3 | 3.5 ±0.05 | 1.75 ±0.1 |

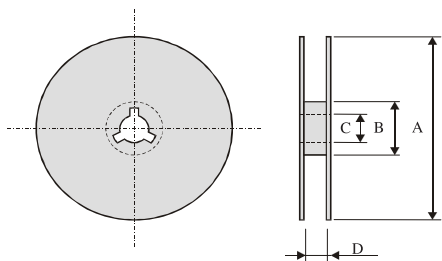
| Series No. | P1 | P0 | ØD | T |
|------------|---------|---------|-----------------------------------|------------|
| WF25 | 4 ±0.1 | 4 ±0.1 | 1.5 ^{+0.1} ₋₀ | Max 1.2 |
| WF20 | 4 ±0.1 | 4 ±0.1 | | Max 1.2 |
| WF12 | 4 ±0.1 | 4 ±0.1 | | Max. 1 |
| WF10 | 4 ±0.1 | 4 ±0.1 | | Max. 1 |
| WF08 | 4 ±0.1 | 4 ±0.1 | | Max. 1 |
| WF06 | 4 ±0.1 | 4 ±0.1 | | 0.65 ±0.05 |
| WF04 | 2 ±0.1 | 4 ±0.1 | | 0.4 ±0.05 |
| WF02 | 2 ±0.05 | 4 ±0.05 | | 0.45 ±0.05 |

Dimensions : Millimetres

Newark.com/multicomp-pro
Farnell.com/multicomp-pro
sg.element14.com/b/multicomp-pro

multicompPRO

Reel dimensions



WF25, WF20

| A | B | C | D |
|-------------------------|------------------------|--------------|--------------|
| $\varnothing 178 \pm 2$ | $\varnothing 60 \pm 1$ | 13 ± 0.2 | 14 ± 0.5 |

WF12, WF10, WF08, WF06, WF04

| A | B | C | D |
|-------------------------|------------------------|--------------|-------------|
| $\varnothing 178 \pm 2$ | $\varnothing 60 \pm 1$ | 13 ± 0.2 | 9 ± 0.5 |

WF02

| A | B | C | D |
|---------------------------------|--------------------------------|--------------|-----------------|
| $\varnothing 180^{+0.0}_{-1.5}$ | $\varnothing 60^{+0.0}_{-1.5}$ | 13 ± 0.2 | $9^{+1}_{-0.0}$ |

Taping quantity

- Chip resistors 4,000 pcs per reel (WF25, WF20)
- Chip resistors 5,000 pcs per reel (WF10, WF12, WF08, WF06)
- Chip resistors 10,000 pcs per reel (WF04)
- Chip resistors 15,000 pcs per reel (WF02)

Dimensions : Millimetres

Important Notice : This data sheet and its contents (the "Information") belong to the members of the AVNET group of companies (the "Group") or are licensed to it. No licence is granted for the use of it other than for information purposes in connection with the products to which it relates. No licence of any intellectual property rights is granted. The Information is subject to change without notice and replaces all data sheets previously supplied. The Information supplied is believed to be accurate but the Group assumes no responsibility for its accuracy or completeness, any error in or omission from it or for any use made of it. Users of this data sheet should check for themselves the Information and the suitability of the products for their purpose and not make any assumptions based on information included or omitted. Liability for loss or damage resulting from any reliance on the Information or use of it (including liability resulting from negligence or where the Group was aware of the possibility of such loss or damage arising) is excluded. This will not operate to limit or restrict the Group's liability for death or personal injury resulting from its negligence. Multicomp Pro is the registered trademark of Premier Farnell Limited 2019.