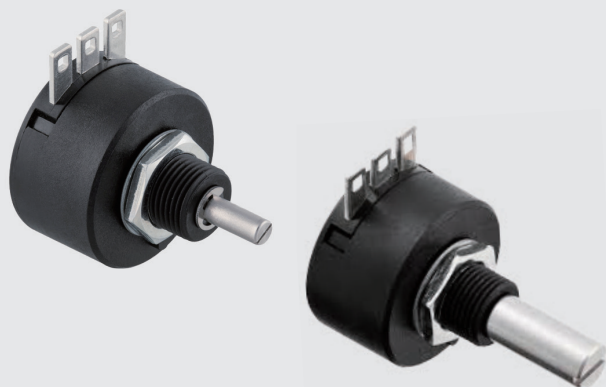


COMPACT AND HIGH ACCURACY, LOW-COST CONDUCTIVE PLASTIC ROTARY ANGLE TYPE

CP-2FL series

RoHS compliant



FEATURES

- Low Price and Short Delivery Time
- Effective Electrical Travel : 340°
- Independent Linearity : $\pm 1\%$
- Ratiometric Voltage Output
- Shaft with Screw-driver slot for Adjustments
- Shaft diameter :
CP-2FL $\phi 3.175\text{mm}$, CP-2FL-6 $\phi 6\text{mm}$
- Metal Sleeve Bearing : Copper Alloy

OPTION

- Independent Linearity : $\pm 0.5\%$

STANDARD SPECIFICATIONS

Electrical characteristics

Effective Electrical Travel	340° + 2, -3
Total Resistance	1, 5, 10 k Ω
Total Resistance Tolerance	$\pm 20\%$
Independent Linearity	$\pm 1\%$ ($\pm 0.5\%$ Optional)
Rated Dissipation	0.5 W / 50°C
Output Smoothness	0.1% max.
Insulation Resistance	100 M Ω min. /1000 VDC
Dielectric Strength	1000 VAC /1 Minute
Temperature Coefficient of Resistance	± 400 ppm/K

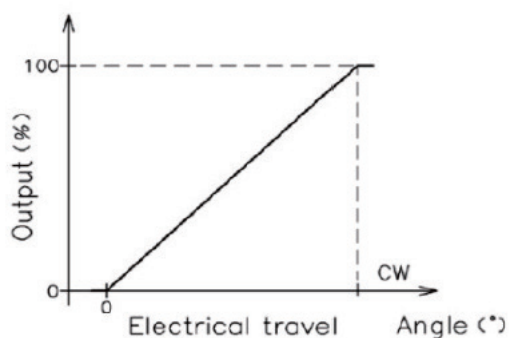
Mechanical characteristics

Total Mechanical Travel	360° Endless
Torque	2 mN·m max.
Thrust Load Tolerance	2 N
Radial Load Tolerance	5 N
Net weight	Approx. 20 g

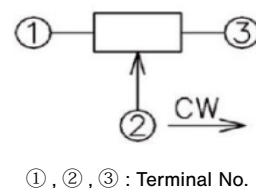
Environmental characteristics

Life Cycles	Min.10 Million Cycle
Operating Temp. Range	-40 ~ +100°C
Storage Temp. Range	-40 ~ +100°C
Vibration	150 m/s ² , 2000 Hz 3 axis 2 hours each
Shock	500 m/s ² , 11 ms 6 directions 3 times

OUTPUT CHARACTERISTICS



SCHEMATIC



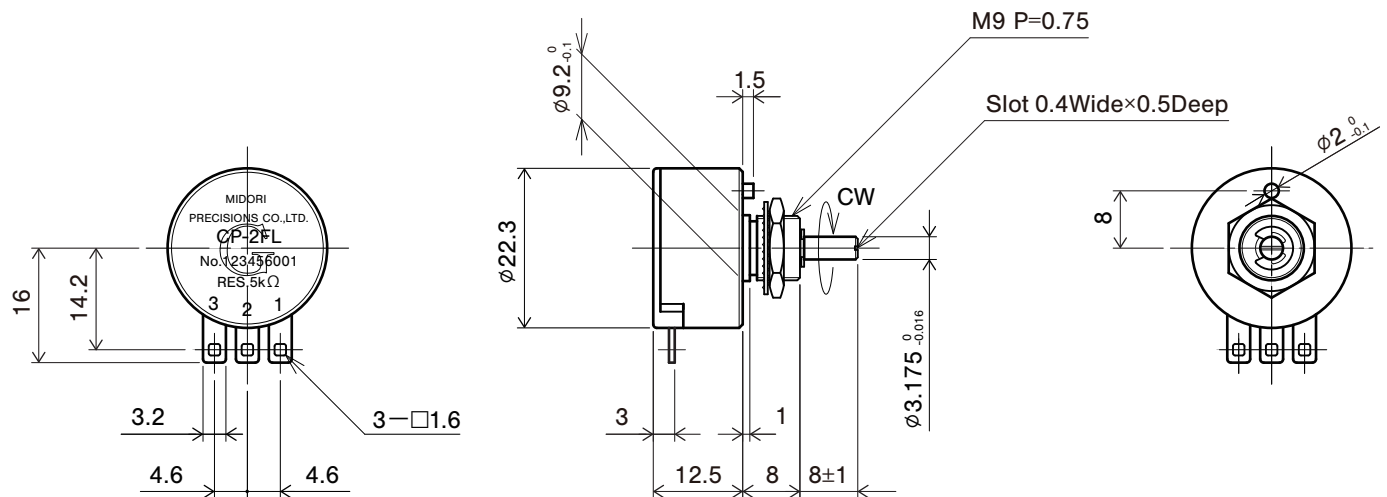
CP-2FL

POTENTIOMETERS

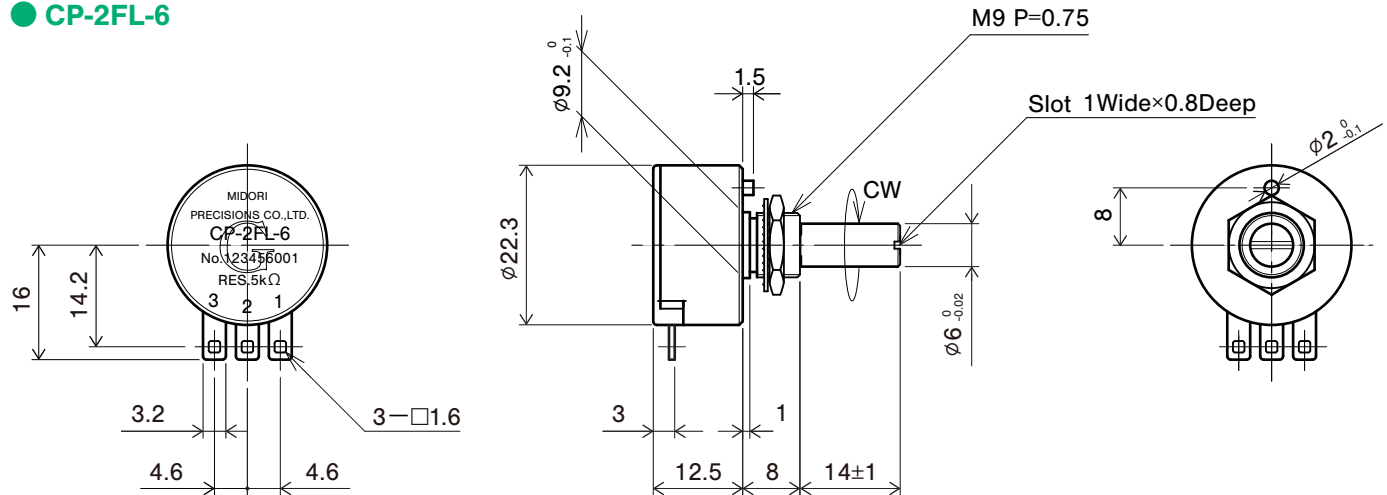
OUTLINE DIMENSIONS

CP-2FL

(Unit:mm)



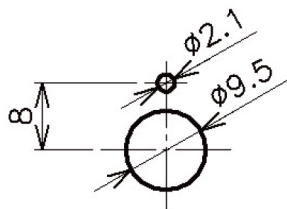
CP-2FL-6



<Accessories>

M9 Nut, Internal toothed lock washer
1 piece each

<Mounting>



HANDLING INSTRUCTION

- Miswiring may cause burnout of resistive element.
- To avoid burnout of resistive element, do not supply 1mA or more current to terminal 2.
- To reduce sliding noises, load resistance must be as high as possible.
- Slight continuous vibration such as dither might cause short lifetime of the sensor.
- Please read carefully the instructions and directions for use.