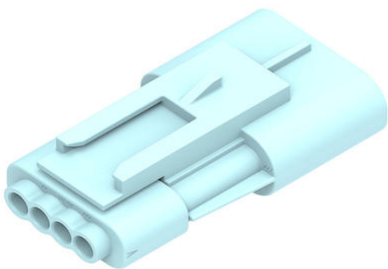




**Part Number :** [2077781904](#)  
**Product Description :** Squba 3.6 Sealed Plug Assembly, 3.60mm Pitch, 4 Circuits, Single Row, Glow-Wire Capable, with Clipslot, Key I, Mint, UL1007/UL1061 Compatible  
**Series Number :** 207778  
**Status :** Active  
**Product Category :** Connector Housings  
**Engineering Number :** 207778-0904



## Documents & Resources

### Drawings


- [2077781904\\_sd.pdf](#)
- [2077780000-PK-000.pdf](#)
- [3D Models and Design Files](#)
- [2077781904\\_stp.zip](#)

### Specifications

- [2077760000-AS-000.pdf](#)
- [2077760000-PS-000.pdf](#)
- [2077760000-TS-000.pdf](#)

## Product Environment Compliance

### Compliance

GADSL/IMDS	Not Relevant
China RoHS	 per SJ/T 11365-2006
EU ELV	Not Relevant
Low-Halogen Status	Not Low-Halogen per IEC 61249-2-21
REACH SVHC	Not Contained per D(2024)7663-DC (21 Jan 2025)
EU RoHS	Compliant per EU 2015/863

[Compliance Statements](#)

- EU RoHS
- REACH SVHC
- Low-Halogen

#### Industry Documents

- IPC 1752A Class C
- IPC 1752A Class D
- Molex Product Compliance Declaration
- IEC-62474
- chemSHERPA (xml)

#### Substances of Interest

- PFAS

#### EU RoHS Certificate of Compliance

#### Additional Product Compliance Information

## Part Details

### General

Status	Active
Category	Connector Housings
Series	207778
Description	Squba 3.6 Sealed Plug Assembly, 3.60mm Pitch, 4 Circuits, Single Row, Glow-Wire Capable, with Clipslot, Key I, Mint, UL1007/ UL1061 Compatible
Application	Power, Signal, Wire-to-Wire
Product Name	Squba
UPC	196823741531

### Agency

UL	E29179
----	--------

### Physical

Circuits (maximum)	4
Color - Resin	Mint
Flammability	94V-0
Gender	Plug
Glow-Wire Capable	Yes

Keying to Mating Part	None
Lock to Mating Part	Yes
Material - Resin	Nylon
Net Weight	6.032/g
Number of Rows	1
Packaging Type	Bag
Panel Mount	Yes
Pitch - Mating Interface	3.60mm
Pitch - Termination Interface	3.60mm
Polarized to Mating Part	Yes
Temperature Range - Operating	-40° to +105°C

---

## Mates With / Use With

### Mates with Part(s)

Description	Part Number
Squba 3.6 Sealed Receptacle Assembly, 3.60mm Pitch, 4 Circuits, Single Row, Glow-Wire Capable, Key I, Mint, UL1007/UL1061 Compatible	<u><a href="#">2077820904</a></u>

### Use with Part(s)

Description	Part Number
Squba 3.6 Plug Terminal, Matte Tin Plating, UL1007/UL1061 Compatible, 16 AWG, Reel	<u><a href="#">2077760001</a></u>
Squba 3.6 Plug Terminal, Matte Tin Plating, UL1007/UL1061 Compatible, 20-18 AWG, Reel	<u><a href="#">2077760002</a></u>
Squba Weather Cap for 8 or 4 Circuit Plug Housing	<u><a href="#">2204230008</a></u>