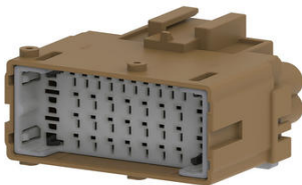




**Part Number :** [2159580265](#)  
**Product Description :** MX-DaSH Standard Male  
Connector Assembly, 35 Circuits, Keying Option E,  
Brown  
**Series Number :** 215958  
**Status :** Active  
**Product Category :** Connector Housings



## Documents & Resources

### Drawings

- [2159580265\\_sd.pdf](#)
- [2159580150-PK-000.pdf](#)
- 3D Models and Design Files
- [2159580265\\_stp.zip](#)

### Specifications

- [2159580000-AS-000.pdf](#)
- [2159580000-PS-000.pdf](#)

## Product Environment Compliance

### Compliance

GADSL/IMDS	Compliant
China RoHS	Not Relevant
EU ELV	Compliant per 2000/53/EC
Low-Halogen Status	Not Relevant
REACH SVHC	Not Contained per D(2024)6225-DC (07 Nov 2024)
EU RoHS	Compliant per EU 2015/863

### Compliance Statements

- EU RoHS
- REACH SVHC
- Low-Halogen

### Industry Documents

- IPC 1752A Class C
- IPC 1752A Class D
- Molex Product Compliance Declaration
- IEC-62474
- chemSHERPA (xml)

#### Substances of Interest

- PFAS

#### EU RoHS Certificate of Compliance

#### Additional Product Compliance Information

---

## Part Details

### General

Status	Active
Category	Connector Housings
Series	215958
Description	MX-DaSH Standard Male Connector Assembly, 35 Circuits, Keying Option E, Brown
Application	Power, Wire-to-Wire
Product Name	MX-DaSH
UPC	196823255670

### Physical

Circuits (maximum)	35
Color - Resin	Brown
Gender	Plug
Glow-Wire Capable	No
Keying to Mating Part	Yes
Lock to Mating Part	Yes
Material - Resin	PBT
Net Weight	17.100/g
Number of Rows	4
Packaging Type	Partitioned Carton
Panel Mount	No
Pitch - Mating Interface	3.50mm, 2.50mm
Polarized to Mating Part	Yes

Stackable	No
Temperature Range - Operating	-40° to +125°C

---

### Mates With / Use With

#### Mates with Part(s)

Description	Part Number
MX-DaSH Standard Female Connector Assembly, 35 Circuits, Keying Option E, Brown	<u>2159580165</u>

#### Use with Part(s)

Description	Part Number
Use With	1.20mm AK Male Terminals, 2.80mm Male Terminals