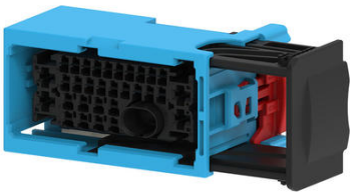




Part Number : [2159580337](#)
Product Description : MX-DaSH High-Speed MGE
Female Connector Assembly, 31+1 Circuits, Keying
Option L, Blue
Series Number : 215958
Status : Active
Product Category : Connector Housings



Documents & Resources

Drawings


- [2159580337_sd.pdf](#)
- [2159580150-PK-000.pdf](#)
- 3D Models and Design Files
- [2159580337_stp.zip](#)

Specifications

- [2159580000-AS-000.pdf](#)
- [2159580000-PS-000.pdf](#)

Product Environment Compliance

Compliance

GADSL/IMDS	Compliant
China RoHS	 per SJ/T 11365-2006
EU ELV	Compliant per 2000/53/EC
Low-Halogen Status	Low-Halogen per IEC 61249-2-21
REACH SVHC	Not Contained per D(2024)7663-DC (21 Jan 2025)
EU RoHS	Compliant per EU 2015/863

Compliance Statements

- EU RoHS
- REACH SVHC
- Low-Halogen

Industry Documents

- IPC 1752A Class C
- IPC 1752A Class D
- Molex Product Compliance Declaration
- IEC-62474
- chemSHERPA (xml)

Substances of Interest

- PFAS

EU RoHS Certificate of Compliance

Additional Product Compliance Information

Part Details

General

Status	Active
Category	Connector Housings
Series	215958
Description	MX-DaSH High-Speed MGE Female Connector Assembly, 31+1 Circuits, Keying Option L, Blue
Application	Power, Wire-to-Wire
Product Name	MX-DaSH
UPC	196823256790

Physical

Circuits (maximum)	32
Color - Resin	Blue
Gender	Receptacle
Glow-Wire Capable	No
Keying to Mating Part	Yes
Lock to Mating Part	Yes
Material - Resin	PBT
Net Weight	24.700/g
Number of Rows	4
Packaging Type	Partitioned Carton
Panel Mount	No
Pitch - Mating Interface	3.50mm, 2.75mm, 2.50mm
Polarized to Mating Part	Yes

Stackable	No
Temperature Range - Operating	-40° to +125°C

Mates With / Use With

Mates with Part(s)

Description	Part Number
MX-DaSH High-Speed MGE Male Connector Assembly, 31+1 Circuits, Keying Option L, Blue	<u>2159580447</u>

Use with Part(s)

Description	Part Number
Use With	1.20mm and 2.80mm AK Female Terminals, MGE Jack