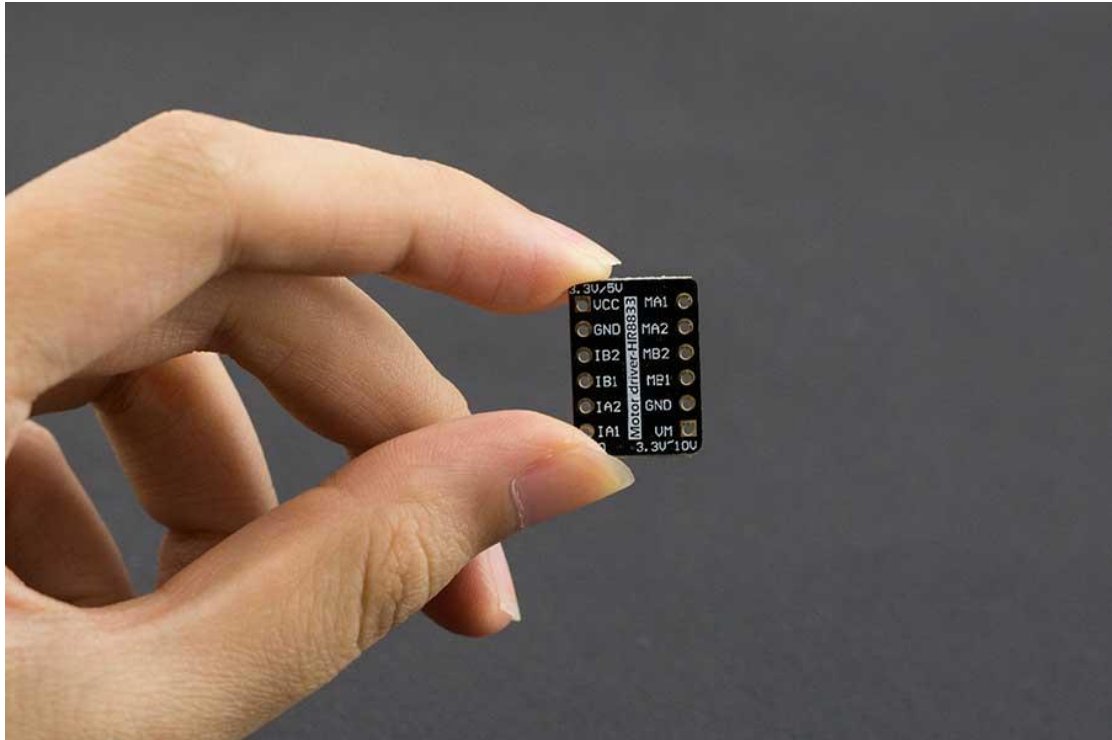
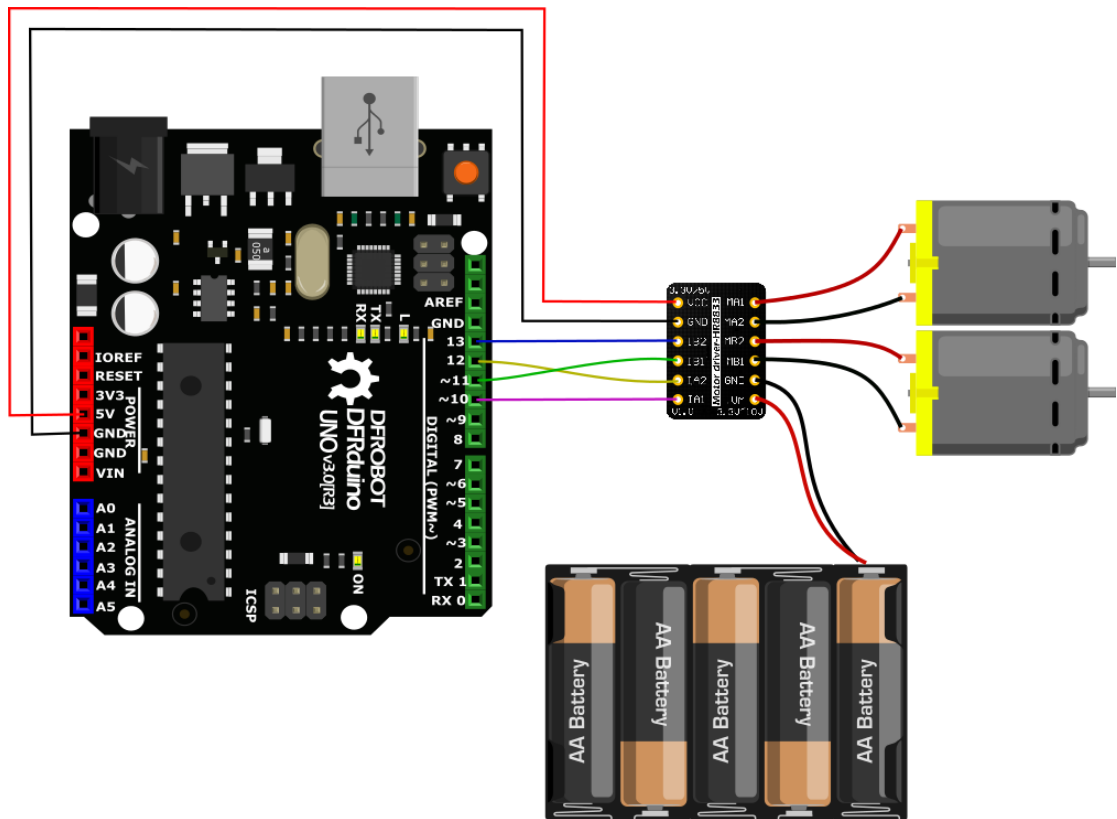


Introduction

This is a ultra compact size Dual-H-Bridge dc motor driver (Based on HR8833), which could drive two way 1.5A DC brush motors up to 10V . It has the same footprint as your thumbnail suitable for projects with limited spaces.



Both sides of the module are desgined with standard XH2.54 pins, which allows you to plug it on a breadboard or prototype board.



Caption

Specification

- Logic Input Voltage (VCC): 3.3-5V
- Load Supply Voltage (VM): 3.3-10V
- Maximum Continuous Operating Current: 1500mA(Single)
- Support PWM speed control mode
- Maximum power dissipation: 25W (T = 75 degree Celsius)
- Working temperature:-20~85°C
- Module Size: 18* 13mm/0.7*0.5 inches

Documents

- [Product WIKI](#)

Shipping List

- Dual 1.5A Motor Driver - HR8833 x1

- 6 Pin XH-2.54 standard pin x2