

Introduction

This 11.6-inch FHD eDP touch display features a high-definition resolution of 1920x1080 and an ultra-thin, ultra-narrow bezel design. It is perfect for HMI and Portable Projects. The display has a full-view design and multi-touch functionality that enhance user interaction. **It is compatible with [LattePanda Mu](#) / [LattePanda Sigma](#) / [LattePanda 3 Delta](#) / [LattePanda 2 Alpha](#) / LattePanda 2 Delta single-board computers.**

High Definition Display

The touch display offers a high-definition resolution of 1920x1080, providing an ultimate visual experience. Whether watching videos or processing images, users can experience unparalleled clarity and color saturation. eDP screens, with their advantages of high-speed transmission, high-resolution support, and scalability, are widely used in various displays, including portable devices, human-machine interaction interfaces, and industrial control panels. With the continuous development of the industrial sector, eDP screens will continue to play a significant role, bringing higher efficiency and visual effects to the industry.



11.6-inch eDP touch display

For LattePanda Mu/Sigma/3 Delta/2 Alpha

Interface	eDP(DP) + I2C(TP)
Resolution	1920x1080
Brightness	350cd/m ² (Max)
Dimension(W x H x D)	267x159x8.8mm

Ultra-thin and ultra-narrow bezel design

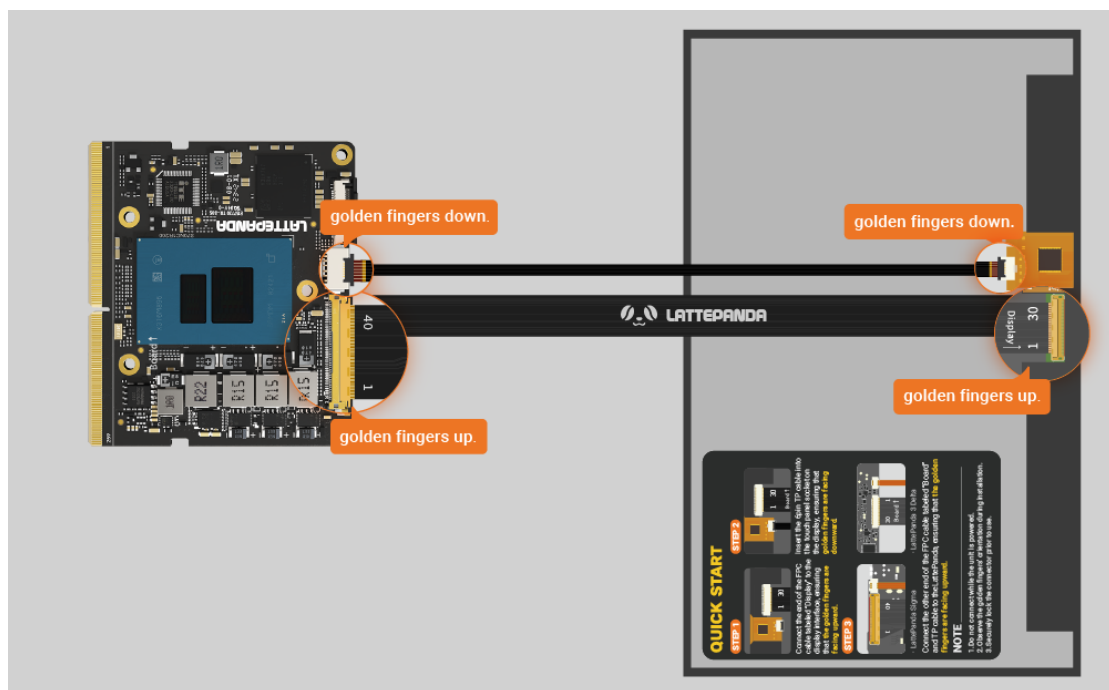
This screen boasts an ultra-thin and ultra-narrow bezel design, offering an exceptional visual experience. Its ultra-thin thickness contributes to a lighter screen, while the extremely narrow bezel design provides a broader field of view and a deeply immersive viewing experience.

Wide Viewing Angle and Multi-touch

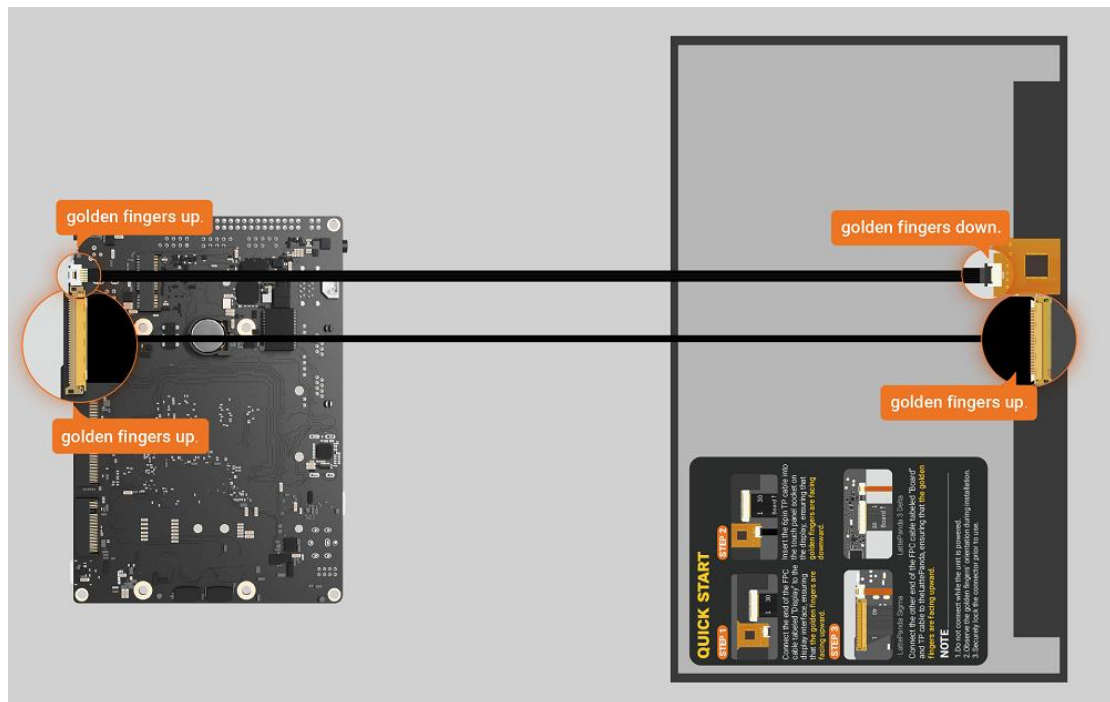
This screen features a full-view design, ensuring clear images and true colors from any angle. In addition, its multi-touch functionality allows users to perform various operations more intuitively, enhancing the user experience.

Best Compatibility

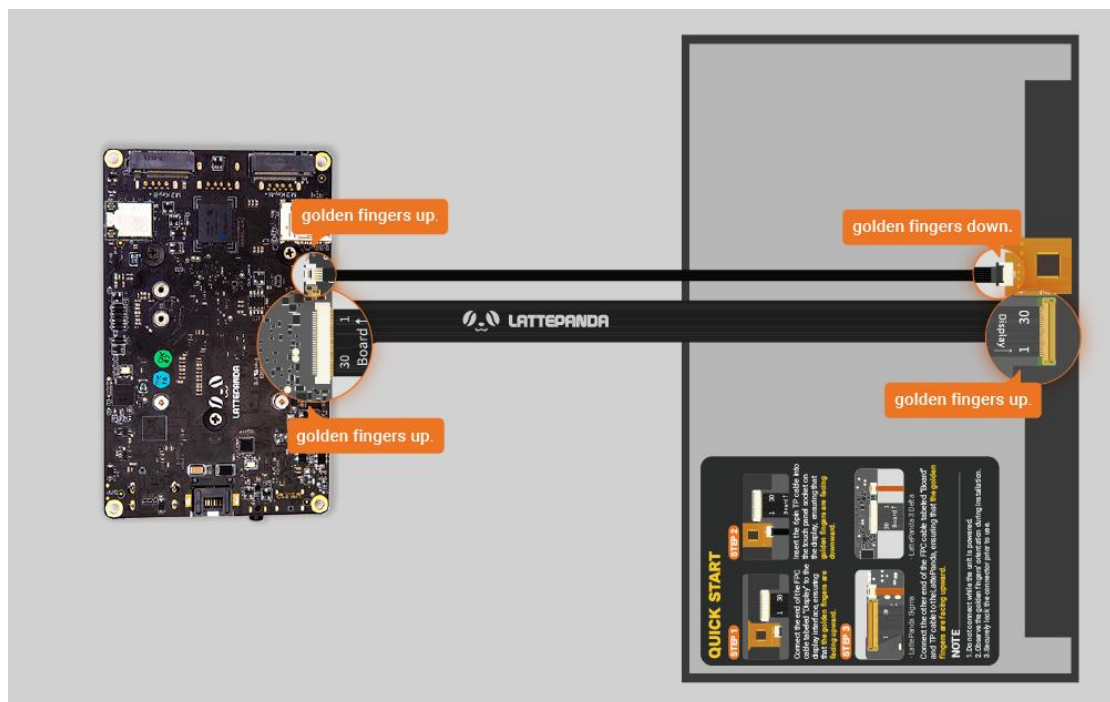
Unlike other normal HDMI screens, this display uses an eDP interface and has the best compatibility with LattePanda Mu / LattePanda Sigma / LattePanda 3 Delta / LattePanda 2 Alpha / LattePanda 2 Delta.



Wiring Diagram of the Display and LattePanda Mu



Wiring Diagram of the Display and LattePanda Sigma



Wiring Diagram of the Display and LattePanda 3 Delta

Note: Please refer to the instruction sticker at the back of the screen for proper screen connection.

Installation Video

Features

- High-quality display with vivid and accurate color reproduction
- Wide viewing angle for enhanced visibility from different perspectives
- Multi-touch functionality for intuitive interaction
- Compact design for easy integration into various projects
- Versatile applications in human-machine interface (HMI) and portable projects

Specification

- Size: 11.6-inch
- Interface: eDP (DP) + I2C (TP)
- Resolution: 1920x1080
- Panel Type: IPS
- Color Gamut: 68% Typ.@CIE1931
- View Direction: Full View
- Pixel Pitch: 0.1335(H) × 0.1335 (V) mm
- Pixel arrangement: RGB Vertical stripe
- Display Area: 256.320 (H) × 144.180(V) mm
- Backlight Type: LED
- Brightness: 350cd/m² (Max)
- OS Support: Windows/Linux
- Operating Temperature: -10 ~ +60 °C
- Storage temperature: -20 ~ +70 °C
- Weight: 431g (bare screen)
- Dimension (W x H x D): 267x159x8.8mm

Documents

[User Manual](#)

Shipping List

11.6-inch eDP touch display x1

Ribbon Cable pack:

30cm 40P to 30P 0.5mm Coaxial EDP Screen Cable (For LattePanda Mu/Sigma) x1

34cm Opposite-Side Touch cable (For LattePanda Sigma) x1

34cm Same-Side Touch cable (For LattePanda Mu) x1

22cm eDP FPC cable (For LattePanda 3 Delta/2 Alpha) x1

21cm Opposite-Side Touch cable (For LattePanda 3 Delta/2 Alpha) x1