

RJF544

Description

The RJF544 can be connected on its receptacle using a quick and easy push-pull mechanism. These ruggedized composite shells are easily mounted with our patented RJStop. The receptacle on equipment can be configured with three types of outputs. Simply with another socket RJ45 receptacle straight or right angled, an RJ45 cordset where you can define the length or a PCB to solder your own cable.

Main features

MAIN CHARACTERISTICS

- Compliant with IEC 60603-7 variante 12
- Shock, vibration and traction resistant
- No cabling operation in field and no tools required
- Sealed against fluids and dust (IP68)
- Quick push pull coupling
- RJ45 cordset retention in the plug: 100 N in the axis
- Mating cycles: 500 min
- Improved EMI Protection
- Compatible with cable diameter from 6 mm [0.236 in] to 13 mm [0.512 in]

DATA TRANSMISSION

- 10 BaseT, 100 BaseTX and 1000 BaseT networks
- Cat.5e per TIA/EIA 568B and ClassD per ISO/IEC 11801
- Cat.6 per TIA/EIA 568B and ClassE per ISO/IEC 11801

ENVIRONMENTAL PROTECTION

- Sealing: IP68
- Salt spray: 1000 h
- Fire retardant / Low smoke: UL94 V0 and NFF 16102, DIN 5510-2
- Vibrations: 10 – 500 Hz, 10 g, 3 axes: no discontinuity > 10 nano s.
- Operating temperature: - 40°C / +85°C

APPLICATIONS

- Telecom equipment
- Video control
- Robotics
- Industrial process control
- CNC machines
- Special machines
- Motion control
- Tele-maintenance

Metal range

Composite range

Cables and cordsets

Adaptors and access points

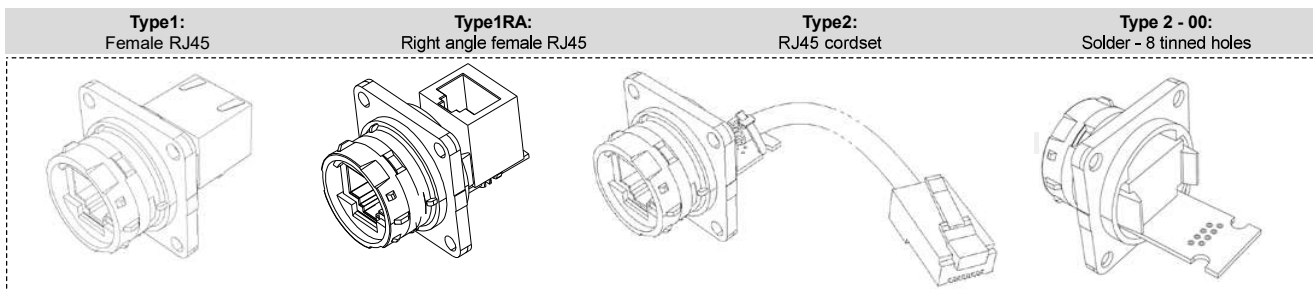
Accessories

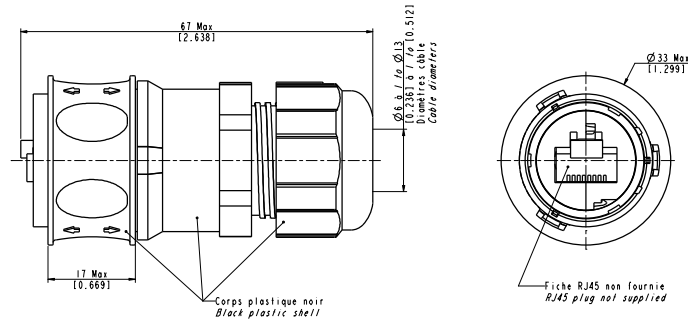
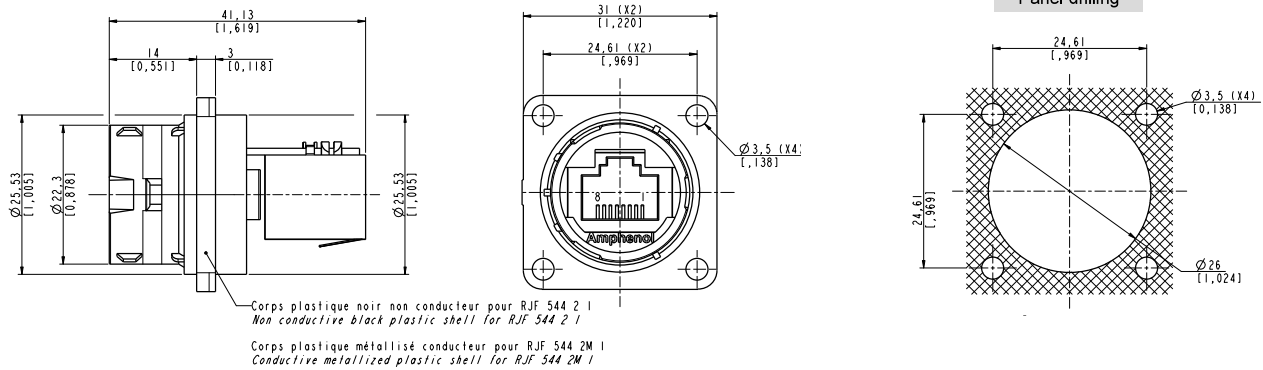
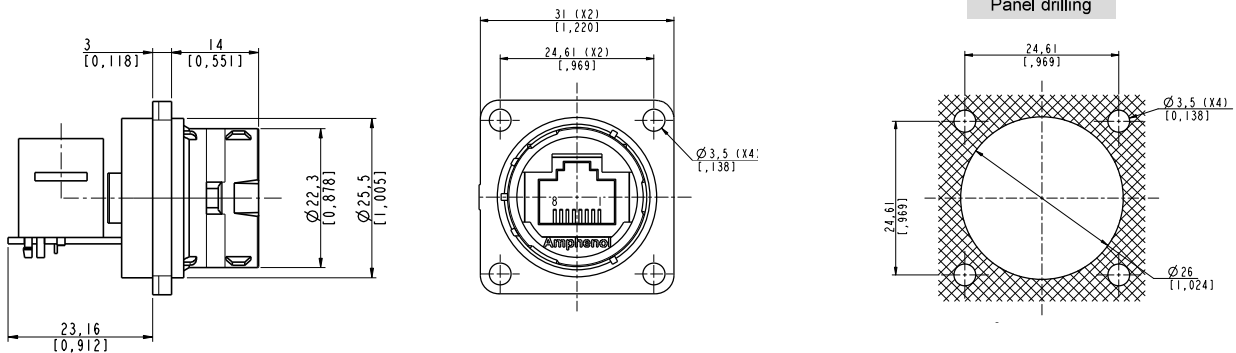
Assembly instructions

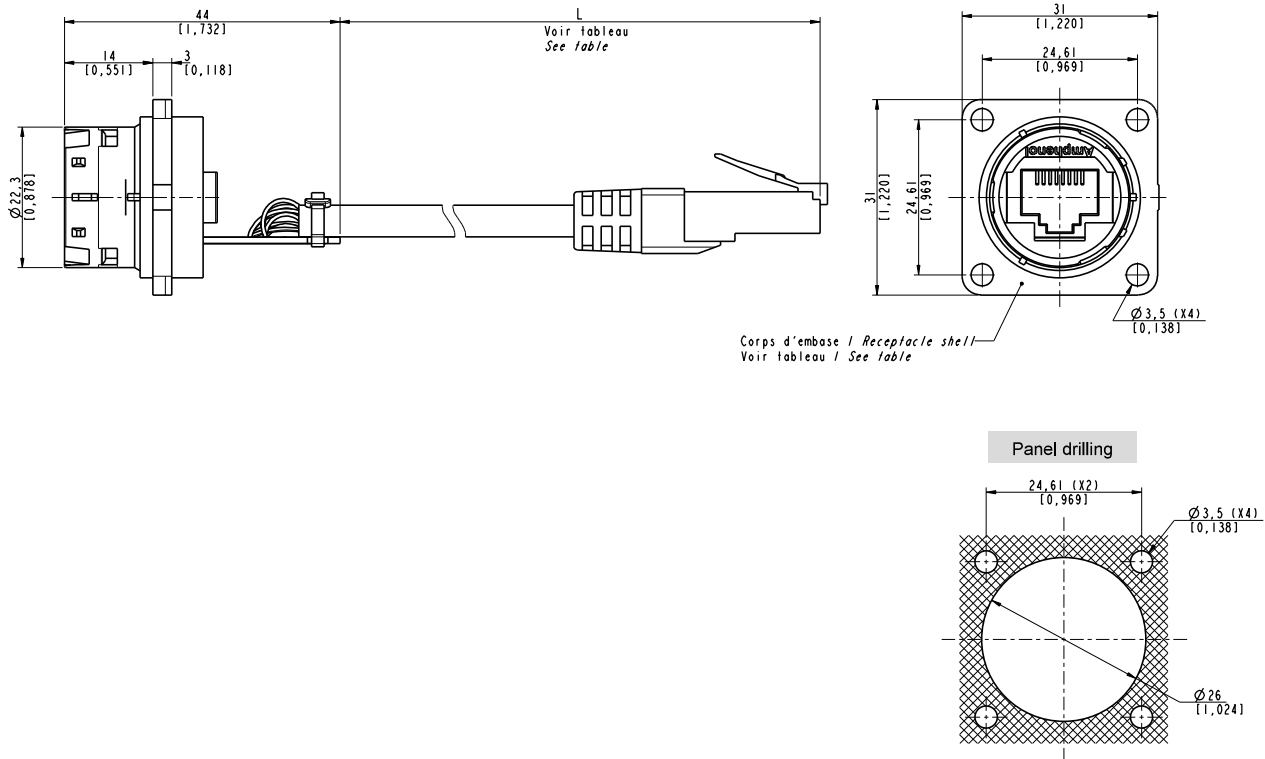
How to order

How to order : Please refer to page 121

Back terminations



RJF544**Overall dimension****Plug - Shell type 6**Part number type : **RJF544 6****Receptacle - Square flange receptacle - 4 mounting holes - Shell type 2 - Back termination type 1**Part number type (Cat.5e) : **RJF544 2 X 1**Part number type (Cat.6) : **RJF5446 2 X 1****Receptacle - Square flange receptacle - 4 mounting holes - Shell type 2 - Back termination type 1RA**Part number type (Cat.5e) : **RJF544 2 X 1RA**

RJF544**Overall dimension****Receptacle - Square flange receptacle - 4 mounting holes - Shell type 2 - Bac termination type 2**Part number type (Cat.5e) : **RJF544 2 X 2 XX 100BTX****Receptacle - Square flange receptacle - 4 mounting holes - Shell type 2 - Back termination type 00**Part number type (Cat.5e) : **RJF544 2 X 2 00**