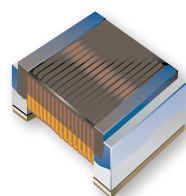




PRODUCT CHANGE NOTIFICATION

MAGNETICS



Bourns® CW201212, PM0805, CW252016, and PM1008 Series High Q Chip Inductors

Ink Supplier Change

Riverside, California – June 10, 2025 – In order to support our fast-growing demand, enhance continuity of supply and provide maximum flexibility to customers, effective February 2, 2026, Bourns will be changing the marking ink supplier for the [CW201212](#), [PM0805](#), [CW252016](#), and [PM1008](#) Series High Q Chip Inductors. The new supplier has been qualified and included in the Bourns Authorized Vendor List. A list of affected part numbers is included below.

Affected Part Numbers				
CW201212-2N2J	CW201212-R22J	PM0805-R10K-RC	CW252016-R18J	PM1008-47NM-RC
CW201212-2N7J	CW201212-R27J	PM0805-R12K-RC	CW252016-R22J	PM1008-56NK-RC
CW201212-2N8J	CW201212-R33J	PM0805-R15K-RC	CW252016-R27J	PM1008-68NK-RC
CW201212-3N3J	CW201212-R39G	PM0805-R18K-RC	CW252016-R33G	PM1008-82NK-RC
CW201212-3N9J	CW201212-R39J	PM0805-R22K-RC	CW252016-R33J	PM1008-R10K-RC
CW201212-4N7J	CW201212-R47J	PM0805-R27K-RC	CW252016-R39J	PM1008-R12K-RC
CW201212-5N6J	CW201212-R56J	PM0805-R33K-RC	CW252016-R47J	PM1008-R15K-RC
CW201212-6N8J	CW201212-R68J	PM0805-R39K-RC	CW252016-R56J	PM1008-R18K-RC
CW201212-8N2J	CW201212-R82J	PM0805-R56K-RC	CW252016-R68J	PM1008-R22K-RC
CW201212-10NJ	CW201212-R91J	CW252016-10NG	CW252016-R82J	PM1008-R27K-RC
CW201212-12NJ	PM0805-2N8M-RC	CW252016-10NK	CW252016-1R0J	PM1008-R33K-RC
CW201212-15NJ	PM0805-3N3M-RC	CW252016-12NK	CW252016-1R2J	PM1008-R39K-RC
CW201212-18NJ	PM0805-5N6M-RC	CW252016-15NG	CW252016-1R5J	PM1008-R47K-RC
CW201212-22NJ	PM0805-6N8M-RC	CW252016-15NK	CW252016-1R8J	PM1008-R56K-RC
CW201212-27NJ	PM0805-8N2M-RC	CW252016-18NK	CW252016-2R2J	PM1008-R68K-RC
CW201212-33NJ	PM0805-10NM-RC	CW252016-22NK	CW252016-2R7J	PM1008-R82K-RC
CW201212-39NJ	PM0805-12NM-RC	CW252016-27NK	CW252016-3R3J	PM1008-1R0K-RC
CW201212-47NG	PM0805-15NM-RC	CW252016-33NG	CW252016-3R9J	PM1008-1R2K-RC
CW201212-47NJ	PM0805-18NM-RC	CW252016-33NK	CW252016-4R7J	PM1008-1R5K-RC
CW201212-56NJ	PM0805-22NM-RC	CW252016-39NK	PM1008-10NM-RC	PM1008-1R8K-RC
CW201212-68NJ	PM0805-27NM-RC	CW252016-47NK	PM1008-12NM-RC	PM1008-2R2K-RC
CW201212-82NJ	PM0805-33NM-RC	CW252016-56NJ	PM1008-15NM-RC	PM1008-2R7K-RC
CW201212-R10J	PM0805-39NM-RC	CW252016-68NJ	PM1008-18NM-RC	PM1008-3R3K-RC
CW201212-R12G	PM0805-47NM-RC	CW252016-82NJ	PM1008-22NM-RC	PM1008-3R9K-RC

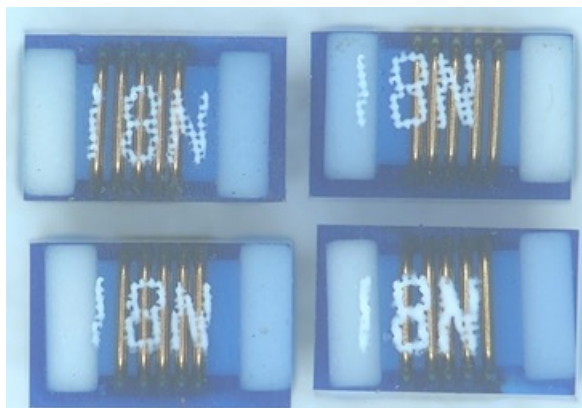
Users should verify that the described changes will not impact the performance of the product in their specific applications.

IC25133

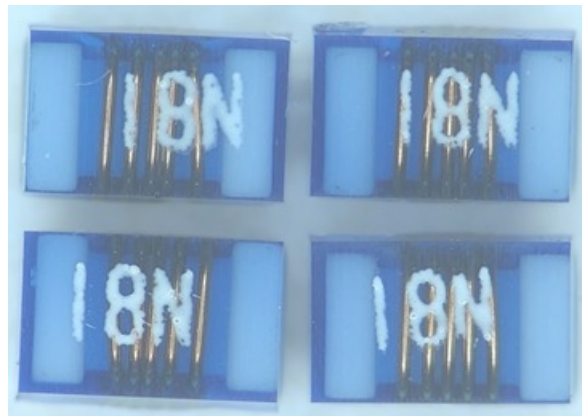
Affected Part Numbers (Continued)

CW201212-R12J	PM0805-56NK-RC	CW252016-R10J	PM1008-27NM-RC	PM1008-4R7K-RC
CW201212-R15J	PM0805-68NK-RC	CW252016-R12J	PM1008-33NM-RC	
CW201212-R18J	PM0805-82NK-RC	CW252016-R15J	PM1008-39NM-RC	

Existing Marking



Revised Marking



As shown in the image above, the form of the affected part numbers will change slightly due to the change in marking ink. The fit, function, quality, and reliability of the inductors will not be affected by the change. Traceability will be maintained through lot code and date code.

Samples are available on request. Bourns recommends that customers test the affected part numbers in their specific applications for verification of satisfactory performance.

Implementation dates are as follows:

Date that deliveries of products manufactured using ink from the existing supplier will cease: **February 1, 2026**

Date that deliveries of products manufactured using ink from the new supplier will begin: **February 2, 2026**

First date code using the above changes: **2606**

If you have any questions or need additional information, please feel free to [contact Customer Service/Inside Sales](#).

Users should verify that the described changes will not impact the performance of the product in their specific applications.