

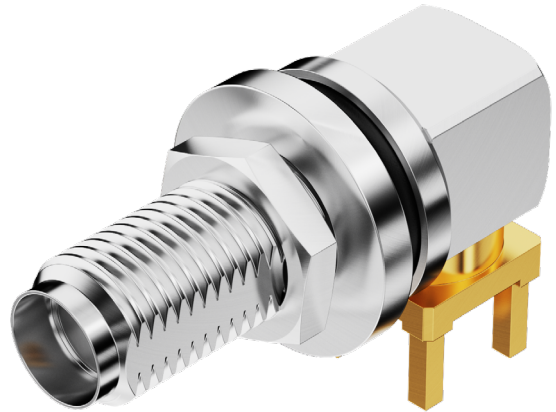
RFPC-SMA35-FN

SMA Right Angle Standard Polarity Jack PCB Through Hole, Extended Thread, 6GHz

SUS316 **IP68 / IP69K Mated or Unmated**

Electrical Properties

Description	Specification
Impedance	50Ω
Frequency Range	DC-6GHz
VSWR (Return Loss)	1.30 Max.@ DC to 6GHz



Mechanical Properties

Description	Specification
Mounting Style	Through Hole
Orientation	Right Angle
Polarity	Standard Polarity
Gender	Jack
Mating Cycles	500 Cycles Minimum
Coupling Mechanism	Threaded
Thread	Extended Thread, 15mm
Mating Torque	8-10 In/Lbs or 0.904 - 1.130 Nm
Recommended PCB Thickness	N/A

Environmental Properties

Description	Specification
Temperature Range	-65°C to 165°C
Ingress Protection	IP68 / IP69K
RoHS Compliance	Compliant with Exemption 6C

Materials

Description	Specification
Body	SUS316, Passivated
Centre Contact	Brass, Gold Plated / Phosphor Bronze, Gold Plated
Insulator	Teflon
Gasket	Silicone Rubber or EPDM

Packaging & Part Handling

Description	Specification
Packaging Type	Tray
Weight per Unit	8.26g

Disclaimer: The image shown is for illustration purposes only and may not be an exact representation of the product.