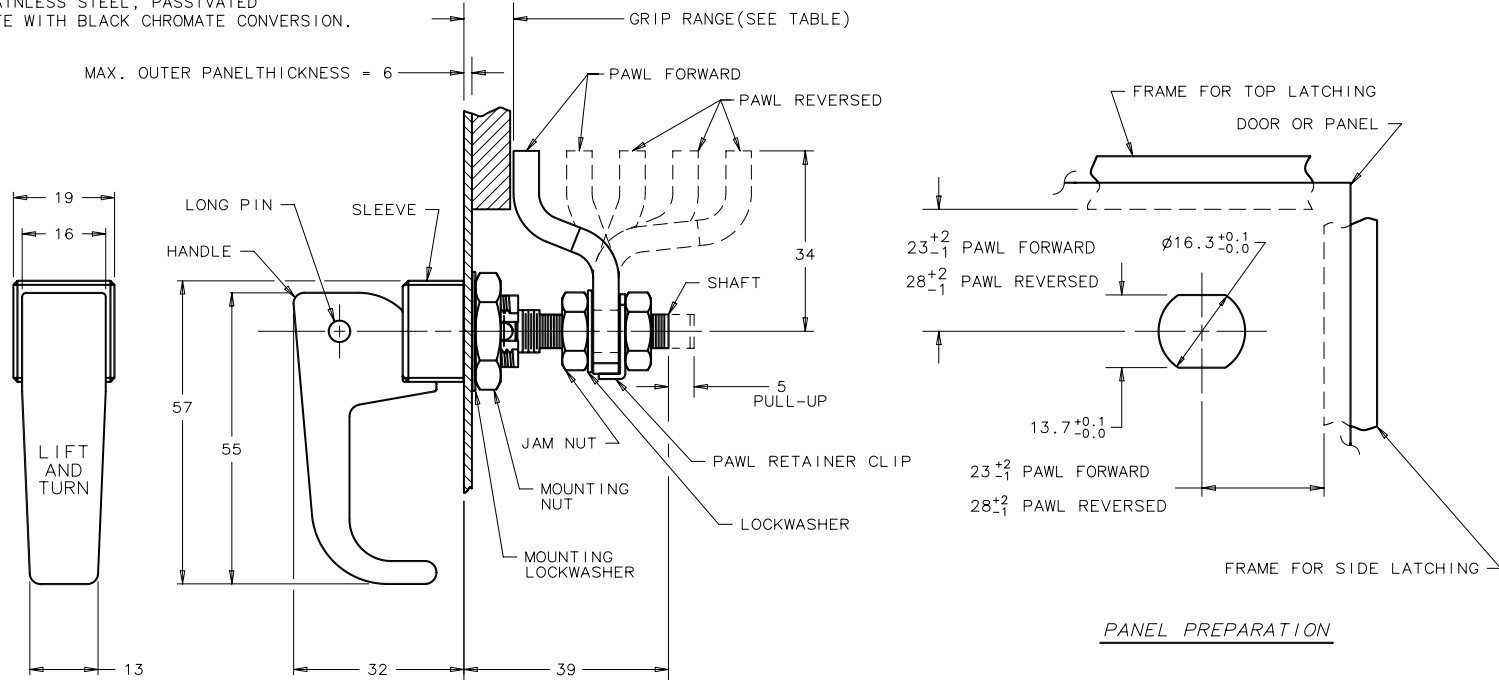


## NOTES:

- A- THREAD SIZE OF SLEEVE IS 5/8-24 AND THE SHAFT IS AN M8.
- B- ASSEMBLE AS SHOWN AND ROTATE PAWL TO THE DESIRED LATCHING POSITION.
- C- PAWL SHOULD BE ADJUSTED TO GRIP MEASUREMENT WITH THE DOOR OPEN AND THE HANDLE IN THE LATCHED POSITION. USE TWO WRENCHES TO TIGHTEN.
- D- MATERIAL AND FINISH:  
HANDLE AND SLEEVE: DIE CAST ZINC, SEE TABLE  
GROOVE PIN: 303 STAINLESS STEEL, NATURAL OR BLACK ORGANIC COATING.  
SPRING: 302 STAINLESS STEEL, PASSIVATED.  
SHAFT : LOW CARBON STEEL, ZINC PLATE PLUS SEALER OR WITH BLACK CHROMATE CONVERSION.  
PAWL POSITIONING PIN: 1213 STEEL, ZINC PLATE PLUS SEALER OR WITH BLACK ORGANIC COATING.  
PAWL AND PAWL RETAINING CLIP: 1010 STEEL, ZINC PLATE, PLUS SEALER.  
LOCKWASHERS: SPRING STEEL, ZINC PLATE PLUS SEALER.  
JAM NUTS: LOW CARBON STEEL, ZINC PLATE, CHROMATE PLUS SEALER.  
MOUNTING NUTS: DIE CAST ZINC, ZINC PLATE, CHROMATE PLUS SEALER.  
BUSHING : 304 STAINLESS STEEL, PASSIVATED OR ZINC PLATE WITH BLACK CHROMATE CONVERSION.  
PIN : 303 STAINLESS STEEL, PASSIVATED OR ZINC PLATE WITH BLACK CHROMATE CONVERSION.

GRIP		ASSEMBLY PART NUMBER TABLE				
MIN	MAX	POLISHED CHROME	BRUSHED CHROME	NATURAL WITH CHEMICAL PROTECTIVE FILM	BLACK POWDER COATED	SATIN SILVER POLYESTER POWDER COATED
2	12	62-10-21	62-10-22	62-10-23	62-10-25	62-10-27
12	22	62-10-31	62-10-32	62-10-33	62-10-35	62-10-37
22	32	62-10-31	62-10-32	62-10-33	62-10-35	62-10-37
32	42	62-10-21	62-10-22	62-10-23	62-10-25	62-10-27
42	52	62-10-11	62-10-12	62-10-13	62-10-15	62-10-17

NOTE: FOR HANDLES WITHOUT LETTERING, ADD -1 TO THE END OF THE PART NUMBER.  
EXAMPLE: (62-10-21-1)



PROPRIETARY ITEM - EXCEPT FOR USES EXPRESSLY GRANTED IN WRITING, INFORMATION DISCLOSED HEREON IS CONFIDENTIAL AND ALL RIGHTS PATENT AND OTHERWISE ARE RESERVED BY SOUTHCORP, INC.

**southco**

No. 62-10 SERIES LATCH ASSEMBLY

DRAWING NUMBER  
J-62-10

REV.	DATE	DRAWN	REVISION	ASSEMBLY PART No.	MATERIAL	FINISH
F	18MAY1999	MMW	CMW	PRN: 62-641		
G	18JUL2007	VSR	WSV	PRN: P2007-0923		
H	19NOV2007	WSV	WSV	PRN: P2007-1447		

DRAWING SCALE: 1 : 1

DATE: 31OCT192

DRAWN: JSS

CHKD:

MILL METER DIMENSIONS

DIMENSIONS WITHOUT TOLERANCES ARE FOR REFERENCE ONLY.

A3 PAPER SIZE

THIRD ANGLE PROJECTION