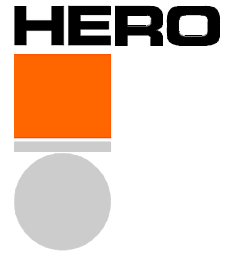


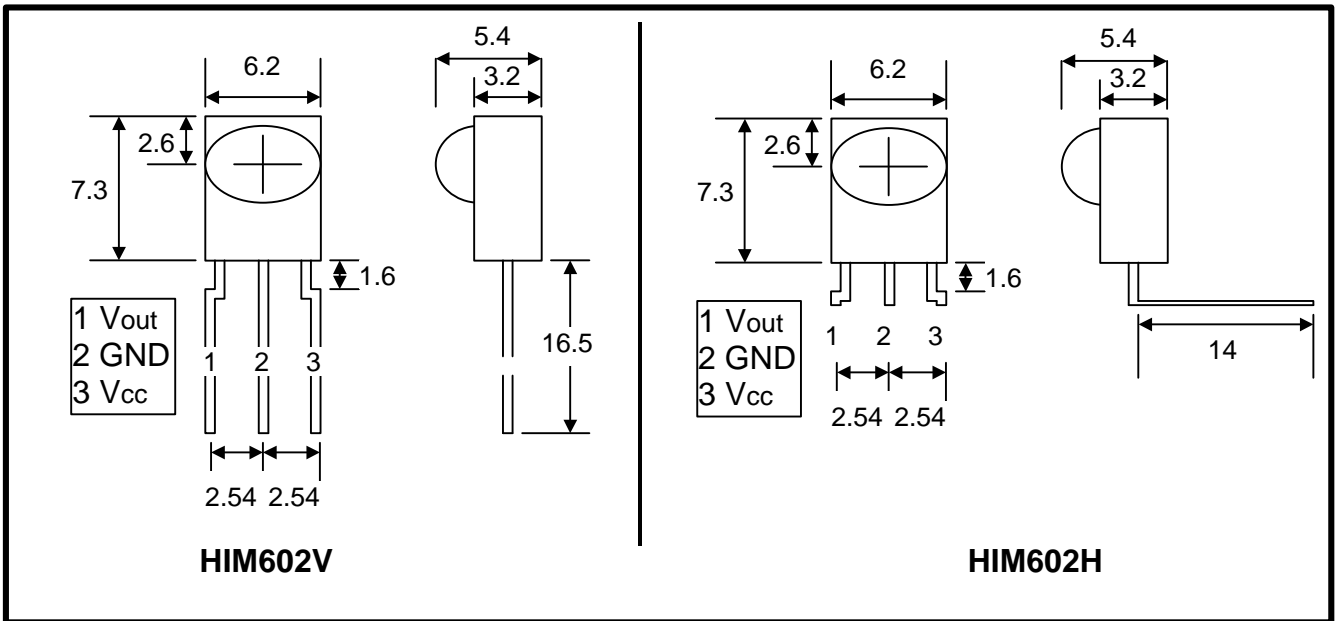
HIM602

Infrared Remote Control Receiver



● Features

- Wide reception angle
- Long reception distance
- Good EMI protection
- Side and top view devices



● Absolute Maximum Ratings ($T_a = 25^\circ\text{C}$)

Parameter	Symbol	Rated Value	Unit
Supply voltage	V_{CC}	5	V
Operating temperature	T_{opr}	-25 to +75	$^\circ\text{C}$
Storage temperature	T_{stg}	-25 to +100	$^\circ\text{C}$
Soldering temperature	T_{sol}	260	$^\circ\text{C}$

● Electro-Optical Characteristics ($T_a = 25^\circ\text{C}$)

Parameter	Symbol	Minimum	Typical	Maximum	Unit
Supply Voltage	V_{CC}	4.5		5.5	V
Supply Current	I_{CC}			3	mA
Reception Distance	d	8	16		m
Peak Wavelength	λ_p		940		nm
Half intensity angle (Horizontal)	θ_h		50	60	degree
Half intensity angle (Vertical)	θ_v		35	50	degree
BPF Centre Frequency	FO		38		kHz
High Level Output Voltage	V_{OH}	4.5			V
Low Level Output Voltage	V_{OL}		0.2	0.5	V
High Level Pulse Width	T_{WH}	400		800	us
Low Level Pulse Width	T_{WL}	400		800	us

MAR 00

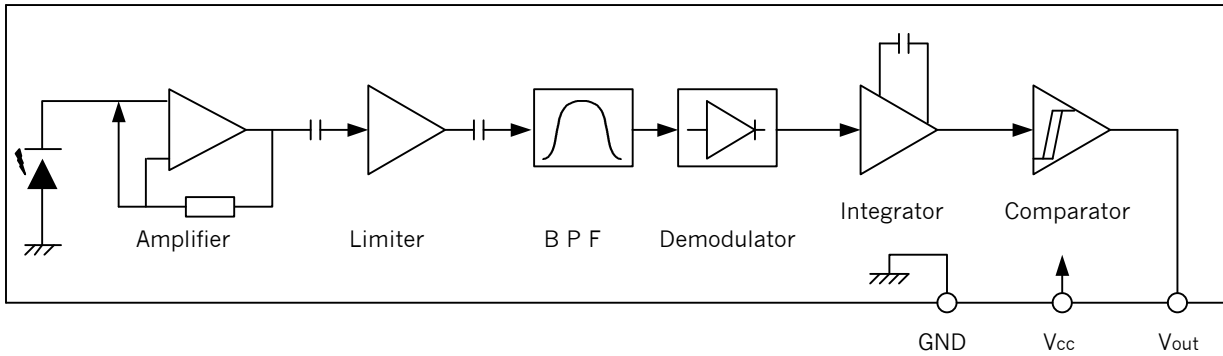
HERO ELECTRONICS LIMITED, DUNSTABLE STREET, AMPHILL, BEDFORDSHIRE, MK45 2JS, ENGLAND

TEL: 01525 405015

Email: sales@heroelec.co.uk

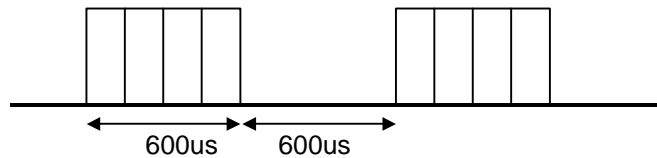
FAX: 01525 402383

● **Schematic Diagram**

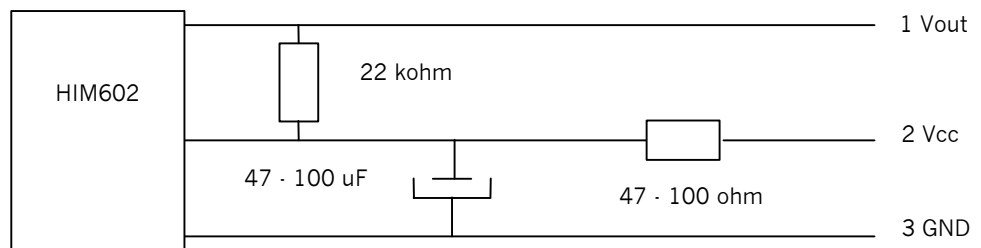


Transmission Waveform

Carrier Frequency 38kHz
Duty 50%



In the case of a noisy power supply, the following additional components are recommended.





■ TYPICAL CHARACTERISTICS

