

NOTES:

A. INSTALLATION INSTRUCTIONS:

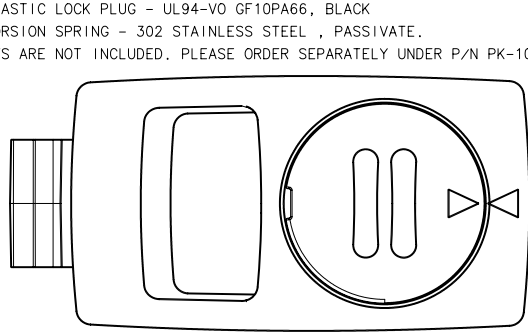
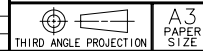
1. PREPARE A BURR FREE HOLE AS SHOWN. PLEASE ALLOW 25mm MINIMUM BEHIND PANEL OPENING TO ENSURE ENOUGH ROOM FOR ASSEMBLY.
2. SLIDE THE GRIP END OF THE LATCH INTO THE PANEL HOLE, THEN PUSH THE SNAP END DOWN UNTIL IT SNAPS INTO PLACE.
3. FOR LOCKING VERSION ONLY, THE LOCKPLUG USES KEY CODE CH751. PLEASE USE PK-11-03 OR EQUIVALENT REMOVAL KEY.

B. MATERIAL AND FINISH:

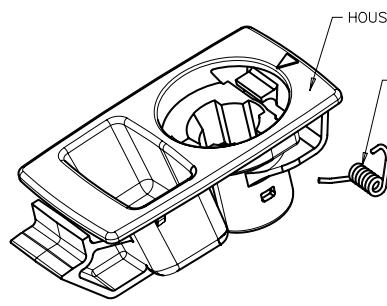
HOUSING, LOCK COLLAR, AND DUMMY PLUG - UL94-V0 PC/ABS, BLACK.
 PLASTIC LOCK PLUG - UL94-V0 GF10PA66, BLACK
 TORSION SPRING - 302 STAINLESS STEEL, PASSIVATE.

C. KEYS ARE NOT INCLUDED. PLEASE ORDER SEPARATELY UNDER P/N PK-10-01.

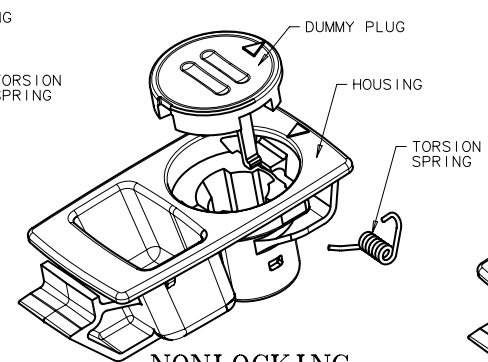
southco		PROPRIETARY ITEM - EXCEPT FOR USES EXPRESSLY GRANTED IN WRITING, INFORMATION DISCLOSED HEREON IS CONFIDENTIAL AND ALL RIGHTS PATENT AND OTHERWISE ARE RESERVED BY SOUTHCO, INC.		A3 SLIDE LATCH (LOCKING AND NONLOCKING)				DATE	DRAWN	CHKD	SCALE	DRAWING NUMBER
								28JUN2004	IR		DNS	J-A3-85-525
REV	DATE	DRAWN/CHKD	DESCRIPTION	ITEM	PART NUMBER	"T"		STYLE		MILLIMETERS/[INCHES]		
H	22FEB2007	IR/AJH	PRN: P2007-0305	ASSEMBLY	A3-80-525-12	0.9-1.2 mm	.035-.047"	NONLOCKING		ALL DIMENSIONS WITHOUT TOLERANCES ARE FOR REFERENCE ONLY.		
I	02JUL2007	IR/MJS	PRN: P2007-0887	ASSEMBLY	A3-80-625-12	1.3-1.6 mm	.051-.062"	NONLOCKING				
J	29JAN2008	VSR/VGV	PRN: P2008-0097	ASSEMBLY	A3-85-525-12	0.9-1.2 mm	.035-.047"	LOCKING				
				ASSEMBLY	A3-85-625-12	1.3-1.6 mm	.051-.062"	LOCKING				
				ASSEMBLY	A3-86-525-12	0.9-1.2 mm	.035-.047"	LESS LOCK				
				ASSEMBLY	A3-86-625-12	1.3-1.6 mm	.051-.062"	LESS LOCK				



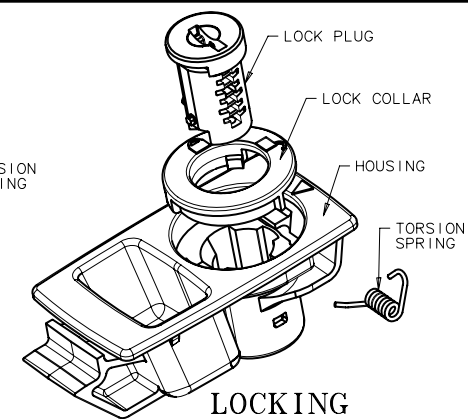
NONLOCKING



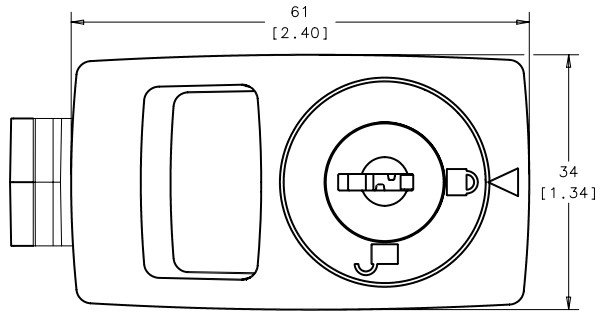
LESS LOCK



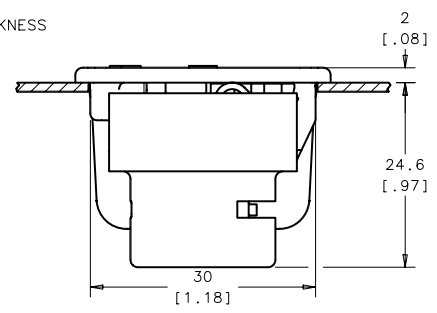
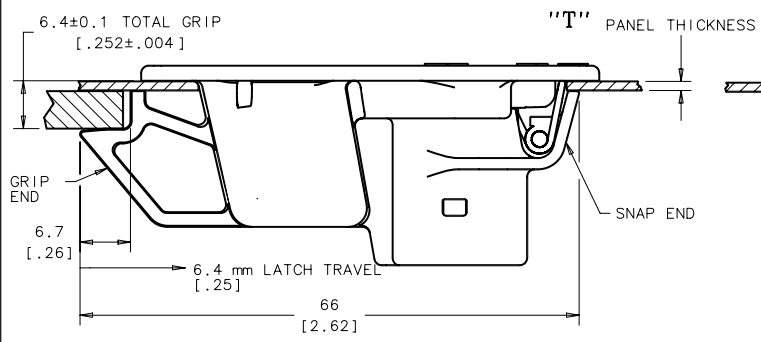
NONLOCKING



LOCKING



LOCKING



PANEL PREPARATION

