

southco

PROPRIETARY ITEM - EXCEPT FOR USES EXPRESSLY GRANTED IN WRITING INFORMATION DISCLOSED HEREON IS CONFIDENTIAL AND ALL RIGHTS PATENT AND OTHERWISE ARE RESERVED BY SOUTHCO, INC.

EJECTOR
1mm FACEPLATE, PMC COMPATIBLE

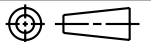
DATE	DRAWN	CHKD	SCALE
29APR2005	RES	AJH	2:1

DRAWING NUMBER
J-P7-A-513-11

REV	DATE	DRAWN/CHKD	DESCRIPTION	PART NUMBER	MATERIAL AND FINISH	COLOR
A	14SEP2006	AJH/MDY	PRN: P2006-1240	P7-A-513-11	SEE NOTE A	SEE NOTE A
				P7-A-513-11-XXX	SEE NOTE A	SEE J-47-0-3 FOR COLOR ONLY

MILLIMETERS

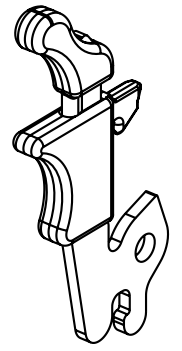
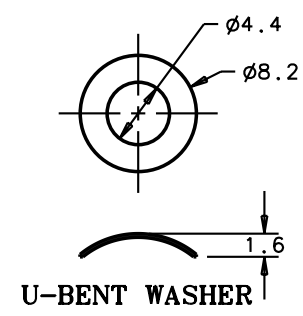
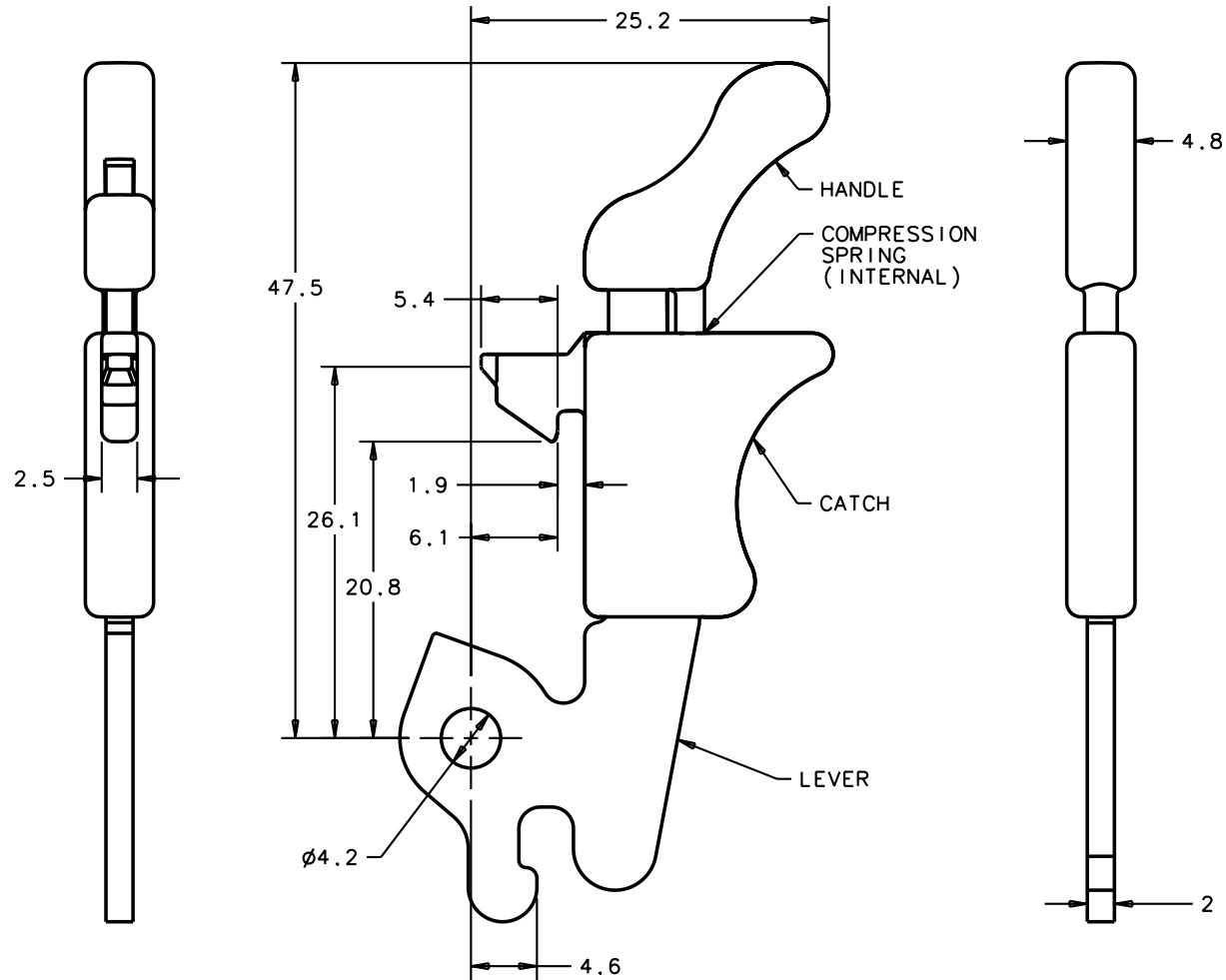
ALL DIMENSIONS WITHOUT TOLERANCES ARE FOR REFERENCE ONLY.



THIRD ANGLE PROJECTION

A4 PAPER SIZE

SHEET 1 OF 2



NOTES:

- A. MATERIAL AND FINISH:
- LEVER: LOW CARBON STEEL, ZINC PLATE PLUS CHROMATE DIP
 - CATCH AND HANDLE: NYLON 6, 33% GLASS FILLED, UL 94 V0, BLACK
 - COMPRESSION SPRING AND U-BENT WASHER: 300 SERIES STAINLESS STEEL, NATURAL
- B. PLATING TO MEET SOUTHCO COSMETIC SPECIFICATION S-121-02 CLASS C
- C. RoHS COMPLIANT.

southco

PROPRIETARY ITEM - EXCEPT FOR USES EXPRESSLY GRANTED IN WRITING INFORMATION DISCLOSED HEREON IS CONFIDENTIAL AND ALL RIGHTS PATENT AND OTHERWISE ARE RESERVED BY SOUTHCO, INC.

EJECTOR

1mm FACEPLATE, PMC COMPATIBLE

DATE	DRAWN	CHKD	SCALE
29APR2005	RES	AJH	1:1

DRAWING NUMBER
J-P7-A-513-11

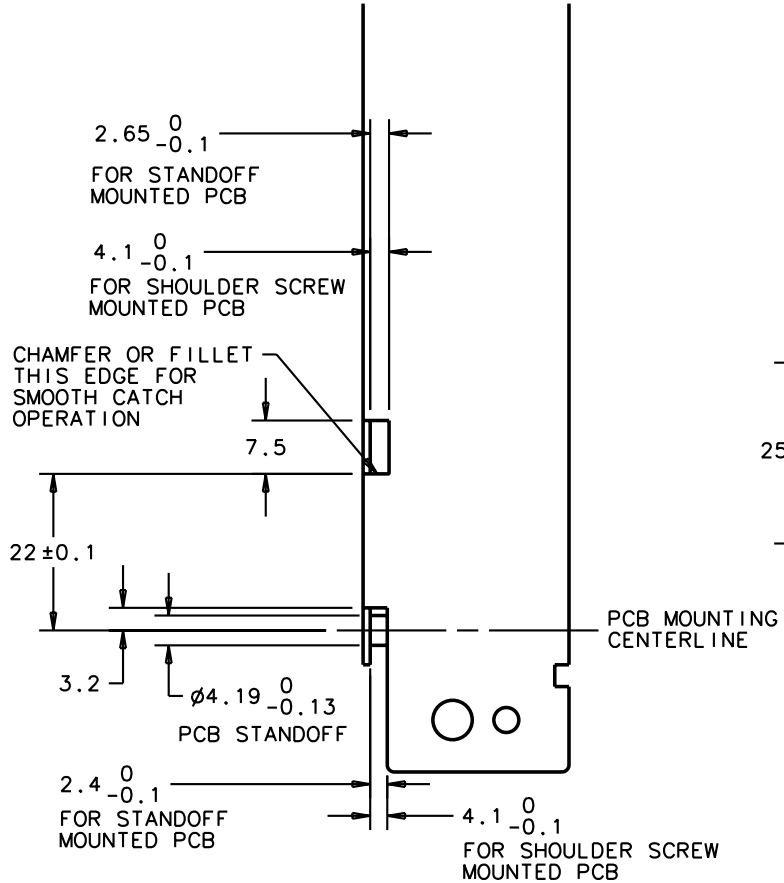
REV	DATE	DRAWN/CHKD	DESCRIPTION	PART NUMBER	MATERIAL AND FINISH	COLOR
A	14SEP2006	AJH/MDY	PRN: P2006-1240	P7-A-513-11	SEE NOTE A	SEE NOTE A
				P7-A-513-11-XXX	SEE NOTE A	SEE J-47-0-3 FOR COLOR ONLY

MILLIMETERS

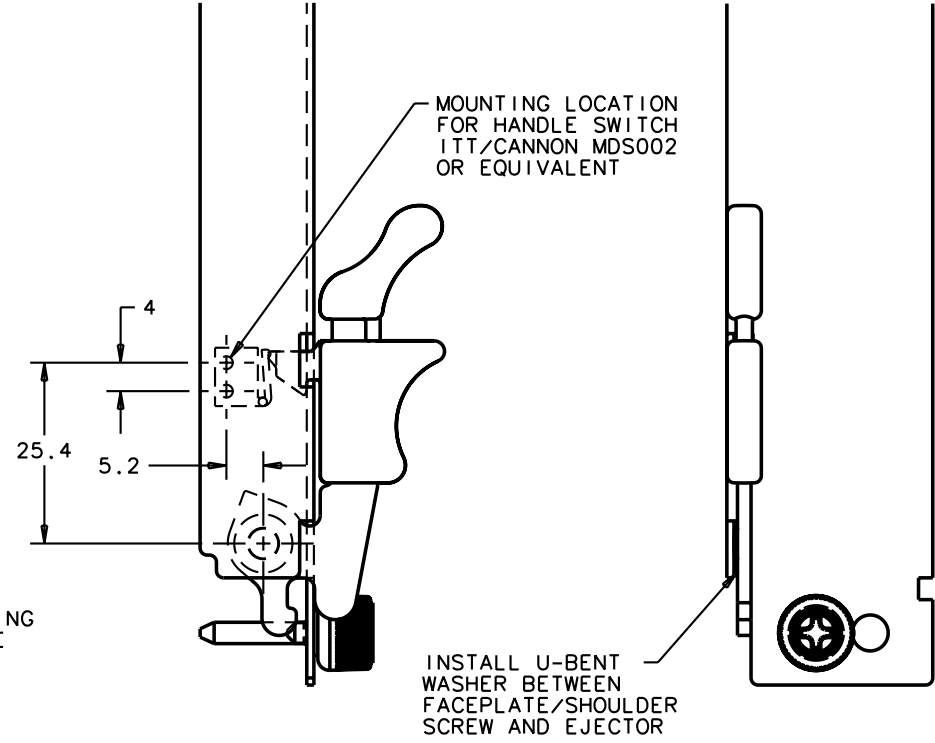
ALL DIMENSIONS WITHOUT TOLERANCES ARE FOR REFERENCE ONLY.

THIRD ANGLE PROJECTION  A4 PAPER SIZE

SHEET 2 OF 2

**PANEL PREPARATION**

MAXIMUM FACEPLATE THICKNESS: 1.5mm

**EJECTOR INSTALLATION**