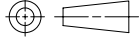


REV	DATE	DRAWN/CHKD	DESCRIPTION	PART NUMBER	MATERIAL AND FINISH	COLOR
				P7-A-523-11	SEE NOTE A	SEE NOTE A
				P7-A-523-11-XXX	SEE NOTE A	SEE J-47-0-3 FOR COLOR ONLY

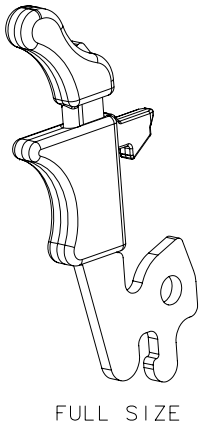
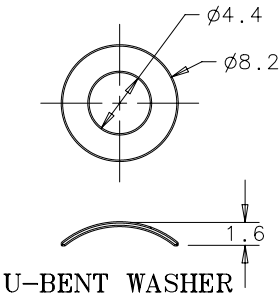
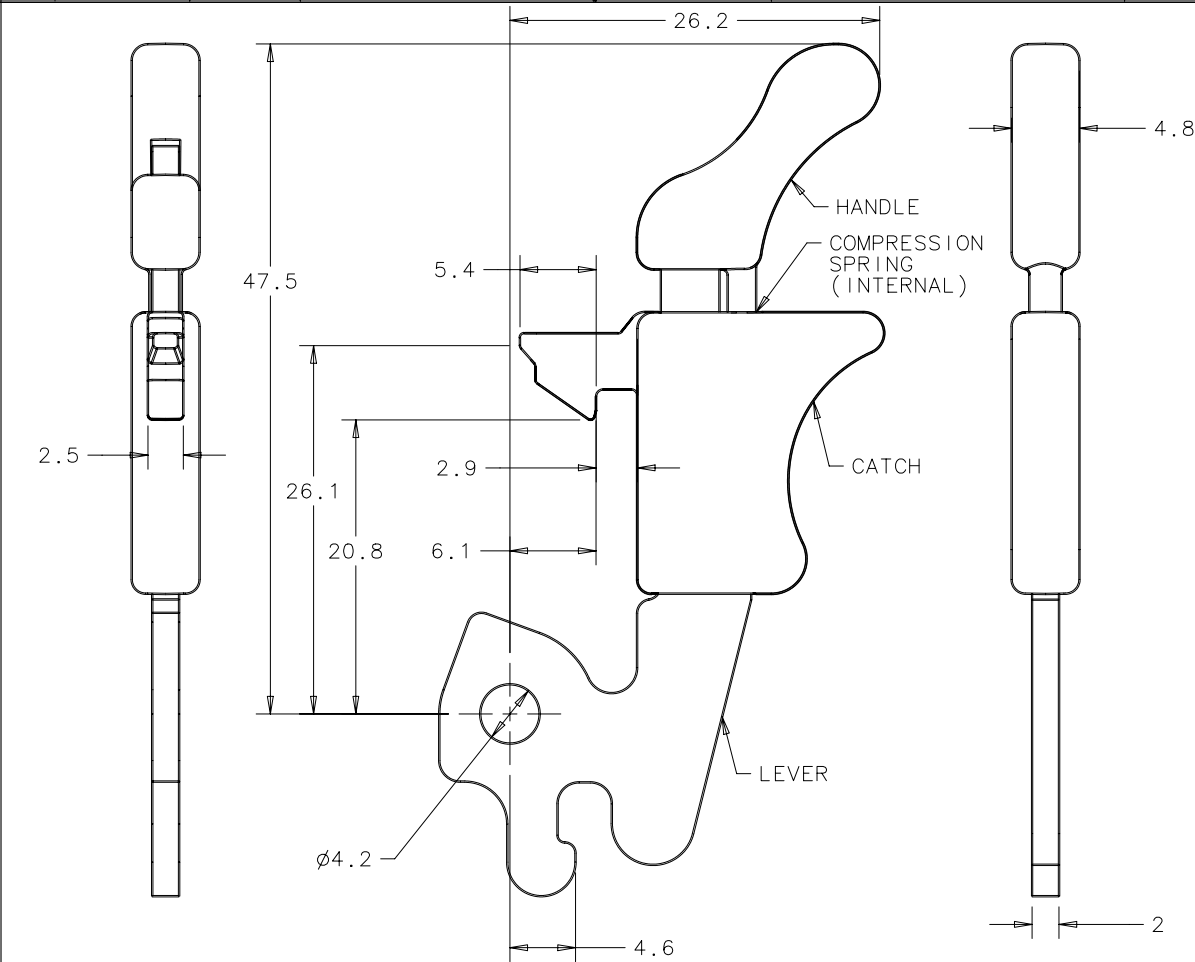
MILLIMETERS

ALL DIMENSIONS WITHOUT
TOLERANCES ARE FOR
REFERENCE ONLY.

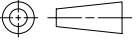


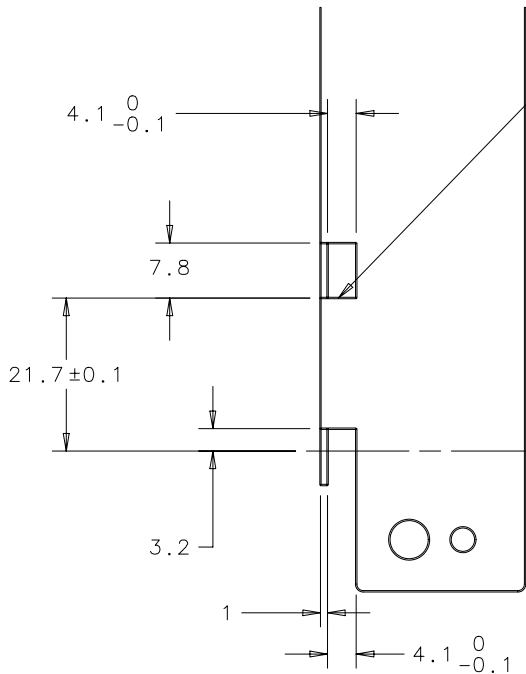
THIRD ANGLE PROJECTION

A4
PAPER
SIZE



- NOTES:
- A. MATERIAL AND FINISH:
- LEVER: LOW CARBON STEEL, ZINC PLATE PLUS CHROMATE DIP
 - CATCH AND HANDLE: NYLON 6, 33% GLASS FILLED, UL 94 V0, BLACK
 - COMPRESSION SPRING AND U-BENT WASHER: 300 SERIES STAINLESS STEEL, NATURAL
- B. PLATING TO MEET SOUTHCO COSMETIC SPECIFICATION S-121-02 CLASS C

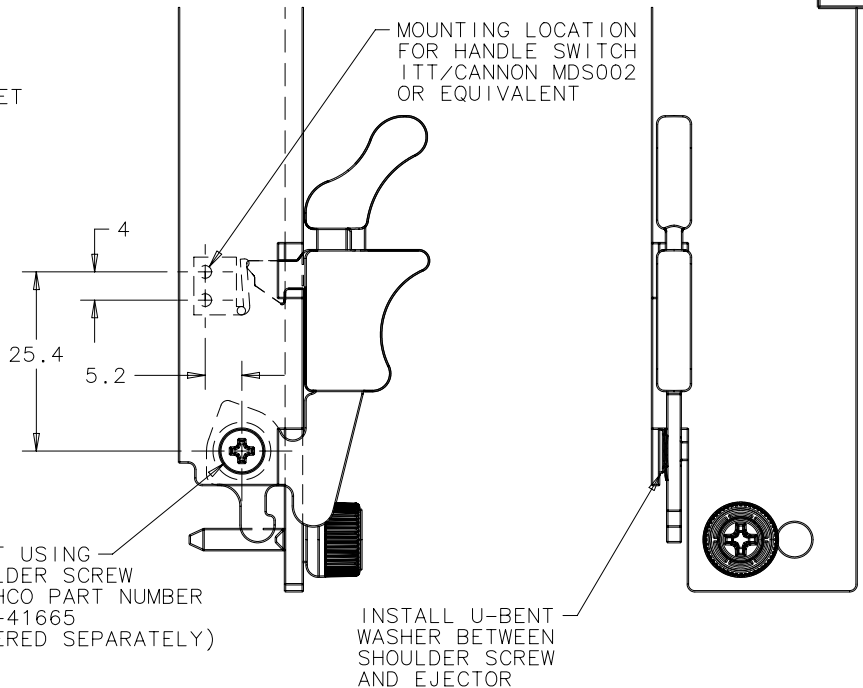
southco®			PROPRIETARY ITEM - EXCEPT FOR USES EXPRESSLY GRANTED IN WRITING INFORMATION DISCLOSED HEREON IS CONFIDENTIAL AND ALL RIGHTS PATENT AND OTHERWISE ARE RESERVED BY SOUTHCO, INC.			EJECTOR PMC 2.5mm FACEPLATE			DATE	DRAWN	CHKD	SCALE	DRAWING NUMBER
									27APR2005	RES	AJH	1:1	J-P7-A-523-11
REV	DATE	DRAWN/CHKD	DESCRIPTION	PART NUMBER	MATERIAL AND FINISH	COLOR							
				P7-A-523-11	SEE NOTE A	SEE NOTE A							
				P7-A-523-11-XXX	SEE NOTE A	SEE J-47-0-3 FOR COLOR ONLY							
													MILLIMETERS
													ALL DIMENSIONS WITHOUT TOLERANCES ARE FOR REFERENCE ONLY.
													 A4 PAPER SIZE
													SHEET 2 OF 2



CHAMFER OR FILLET THIS EDGE FOR SMOOTH CATCH OPERATION

PCB MOUNTING CENTERLINE

PANEL PREPARATION
FACEPLATE THICKNESS 2.5mm



EJECTOR INSTALLATION